

2024 GLOBAL CONFERENCE ON PROCESS SAFETY & BIG DATA



Paper Title

Presenter/Principal Author

Affiliation

Address

Email address

Other Author(s)

Affiliation(s)

Address (es)

Email address (es)

[Insert here any copyright claims you wish to assert]

Prepared for Presentation at
American Institute of Chemical Engineers
2024 Global Conference on Process Safety and Big Data
Frankfurt am Main, Germany
October 29-30, 2024

AIChE shall not be responsible for statements or opinions contained
in papers or printed in its publications

Paper Title

Presenter/Principal Author

Affiliation

Address

Email address

Other Author(s)

Affiliation(s)

Keywords: enter a few keywords here to aid searching

Abstract

Abstract here. Say what the paper says, but say it very briefly. **200 words maximum.**

1 Main section 1 heading (Introduction)

2 Body

Use the MS Style Heading 1, Heading 2, and Heading 3 to split your manuscript into easy to read sections.

2.1 sub-section title

2.1.1 sub-sub section title

Including an example table. Note that the Table Caption is above the Table.

Table 1. Title of Table

Column Title	Column Title	Column Title

Use a 'justified' paragraph format so that each side of paragraphs are to the margin. Do not use very narrow margins. 1" around is good. (Ultimately, the paper is in a back-to-back format in a manual. Narrow margins cause the text to be too close to the spine of the book.)

Most of the time it is advantageous to stick to one type of font. Times New Roman is good. And it is good not to over-use emphasized text (underlined, italicized, semi-quoted text. Used sparingly, the right things get emphasized. Used widely so that everything is emphasized and nothing ends up really getting emphasized.) Text size: suggest 12 for basic paragraph text, table and figure titles, 10 for the actual data within tables and a slow progression upward in size (from 12) for subheadings, headings, all the way up to the paper title. Be consistent and do not over-do changing text size. Your paper may eventually be published in a periodical.

Continued text: When including a figure such as Figure 2 below, generally it is best to use color figures but print it out in black and white and make sure that the figure colors and styles make sense in B&W. For potential publication in Process Safety Progress, Figures should be of a Tiff, PNG, high resolutions JPEG, or related graphics format when cut and pasted into a Word Document. Use of Figures with various colored (dark only) lines that have data points with x's and triangles and circles, etc. on the various lines of different style will make them readable in B&W. Place Figure Captions below the figures. Place Table Captions above Tables.

A numbered list:

- 1. Text 1**
- 2. Text 2**

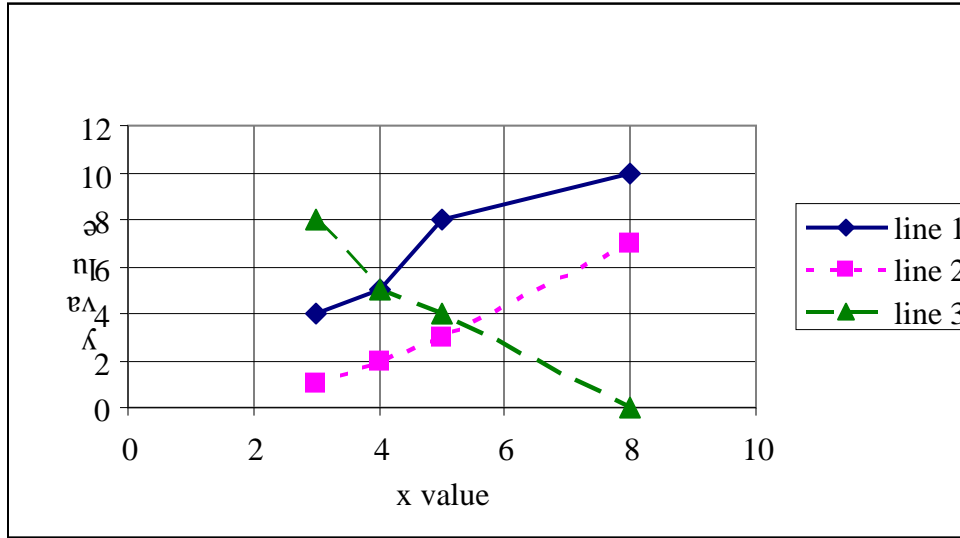


Figure 2. x vs. y as a function of line #

Burger dot example

- Main word/phrase - Text.
- Main word/phrase - Text.
- Main word/phrase - Text.

Continued text. When you are at the 50%, 80%, and 99% completed levels, have a good friend read it. With a 'good friend' defined as one who will be brutally honest with you and make constructive comments and criticisms that, when acted by you, will improve your paper both technically and readability-wise. There is only one thing worse than not sharing your information with others that could benefit from it. That one thing is sharing information in a way that emphasizes not what you have to say but emphasizes mostly your lack of writing skills.

You have several months to write this paper. It will likely take you 2 hours per page overall, on average, from start to finish. If you start now on a 10-page paper it will take you a total of 20 hours of your time to write it. If you start much later on a 10-page paper it will take you a total of 20 hours of your time to write it. But if this 20 hours is spread over a several month time period and not a several week or several day time period just prior to the date it absolutely, positively, has to be done by, you will gain think time and time for it to be proofed by a 'friend' several times and time to re-write it applying the suggestions and correcting errors. The quality of the

paper that your name will be attached to will be far greater if you leave time for think time, review time, reorganization time, correction time. Start now with a goal to have a 1st draft in 2 to 3 weeks.

X Conclusion

The conclusion. Tie in that which was mentioned in the introduction. Use similar and familiar terms. If a reader reads the abstract, the introduction and the conclusion ... does he/she know, while not the details, the important aspects of what you want to convey?

3 References (example format shown below).

Any literature directly referenced within the text, or in any tables or figures, must be notated using Arabic superscript numerals. The reference number must correspond to the numbered citation provided in the references section. Citations must be listed in the order in which they appear in the article. References should be styled in accordance with the reference style of the AMA (American Medical Association). For more information about this reference style, please see the AMA Manual of Style. Examples follow

This embedded file can be used with [Endnotes](#) to help organize references in the AMA style. It is a work in progress and suggestions/questions are welcomed. Contact Ron Willey at r.willey@northeastern.edu.



Journal Article:

[1] Grunbaum B, Shephard GC. Edge-transitive planar graphs. *J. Graph Theory* 1987; **11**: 141–156, DOI: [10.1002/jgt.3190110204](https://doi.org/10.1002/jgt.3190110204).

[2] King VM, Armstrong DM, Apps R, Trott JR. Numerical aspects of pontine, lateral reticular, and inferior olivary projections to two paravermal cortical zones of the cat cerebellum. *Comp Neurol* 1998; **390**: 537-551.

[Last Name First_Middle_Initial_in_Caps. (NO “and” between authors) Title (firstword_cap rest lower case except proper names). *Journal* Year; **Vol(Issue)**: pp-pp.]

Please note that journal title abbreviations should conform to the practices of Chemical Abstracts.

Book:

[3] Gross JL, Tucker TL. *Topological Graph Theory*. New York John Wiley & Sons; 1987.

[4] Voet D, Voet JG. *Biochemistry*. New York John Wiley & Sons; 1990. 1223 p.

[Last Name First_Middle_Initial_In_Caps. *Title*. Place Publisher; Year.]

Book Chapter:

[3] Read, RC and Tutte, TC Chromatic polynomials. *Selected Topics in Graph Theory III* Beineke, LW, Wilson RJ. (Editors), Academic Press, New York 1988; pp. 15–42.

Online Reference:

[4] *OHSA Law & Regulations*. (2011). <http://www.osha.gov/law-regs.html> . Accessed 30 January 2020.

[5] American Cancer Society. Cancer Facts & Figures 2003. <http://www.cancer.org/downloads/STT/CAFF2003PWSe-cured.pdf> . Accessed March 3, 2003.

[Last Name First_Middle_Initial_In_Caps. *Title*. Web_address . [note space after the address

Patent:

Hall KR, Holtzapple MT, Capareda SC. Integrated biofuel production system. U.S. Patent 8,153,850, 2012.

Thesis:

Papaioannou V. A Molecular-Based Group Contribution Equation of State for the Description of Fluid Phase Behaviour and Thermodynamic Derivative Properties of Mixtures (SAFT- γ Mie). Ph.D. thesis, Imperial College London, 2012. then the period this creates a hyperlink] Access date in day month year format]

4 OTHER SUGGESTIONS

5 Layout

- Paper Size 8.5” x 11”, letter
- Do not format for A4 paper
- Left and right margins: 1.25 inches

- Top and bottom margins: 1.0 inch
- Gutter: 0
- Header and footer from edge: 0.5 inches

6 Graphics, pictures, and equations

- Equations: Use MS Word equation editor if possible. If not possible, insert the equation into the document by Copy – Paste Special – As Picture
- Graphs: Do not insert the Excel data that goes with the graph. Instead, insert the graph by selecting the graph and Copy – Paste Special – As Picture
- Photos and illustrations: when inserting pictures preferably start with files in JPG format and 300 dpi resolution. Reduce the native photo size to that more in line with the size required in your paper using an outside program. Just shrinking the file to fit the available space in Word does not reduce the file size. Native size might be 8 x 10 in but that shown is about 2 x 2.
- The graphics that you insert should have a minimum resolution of 300 dpi for grayscale files and 600 dpi to 1200 dpi for bitmap files.
- If you wish to have graphics wrap around your graphics as overlain here, you may do so by right clicking the picture and clicking Format Picture – Layout – Square. Otherwise, right click the picture and click Format Picture – Layout – In line with text.



Checklist before submitting your paper:

- Check to be sure that all editing and redline changes have been accepted.
- Be sure your documents are saved as Word (preferred) or RTF files.
- Be sure all graphics have been inserted into the document as pictures
- Send to another machine as a test to see if the document opens up in good order.
- Convert Mac format papers to PC format
- Remove all page numbering