

Claremont Club & Spa, A
Fairmont Hotel

Skyline A

Mezzanine Level
2,865 Square Feet
288 People

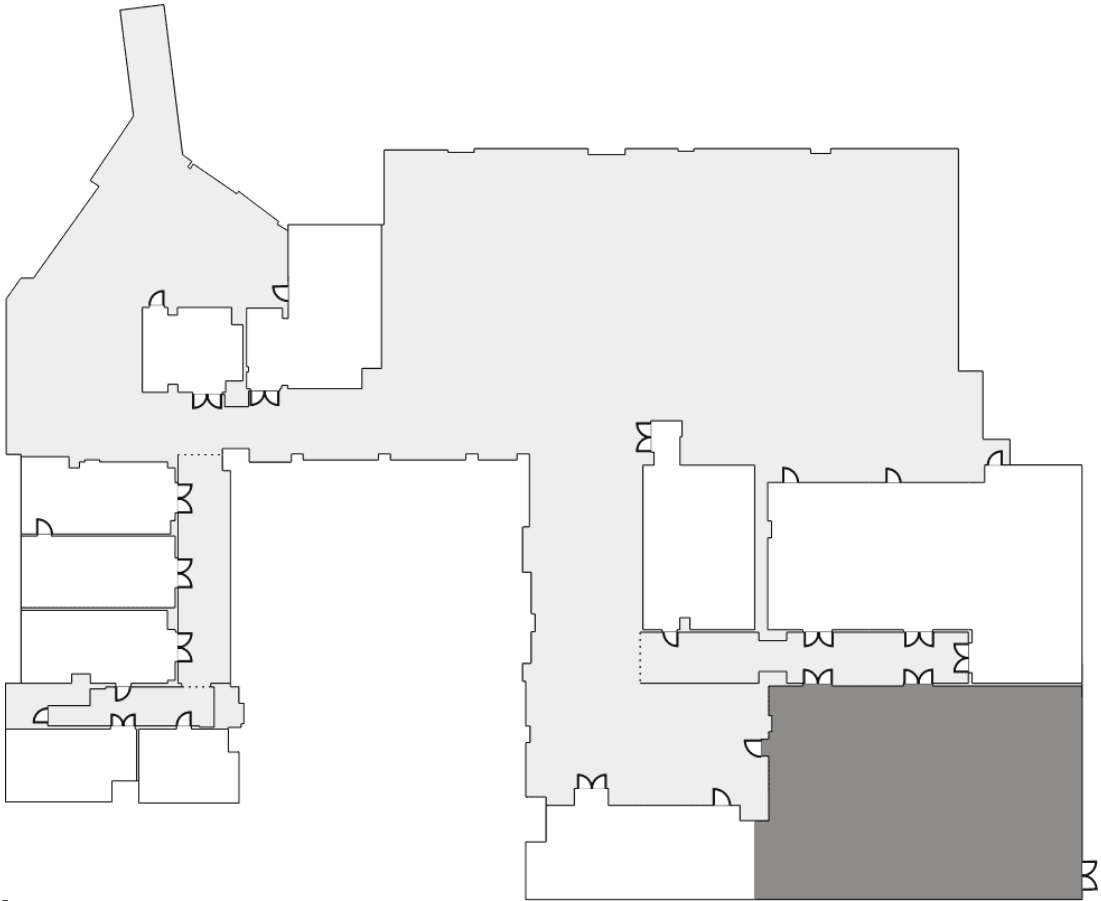
Space Discovered By

syedh@aiche.org

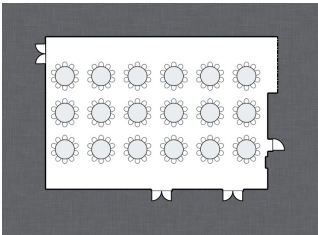
📍 Claremont Hotel & Spa,
Berkeley, CA 94705, USA



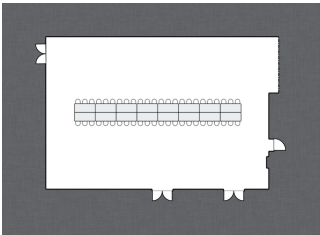
[Explore Online](#)



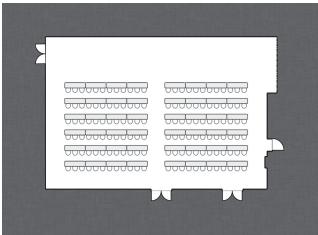
Skyline A Layouts



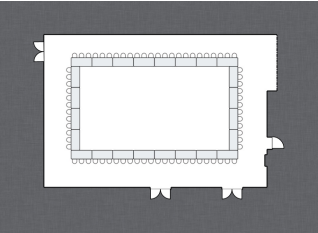
Layout: Banquet
Capacity: 180



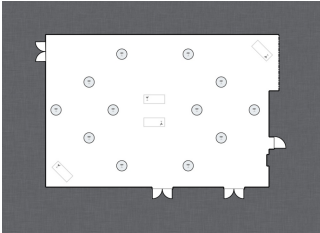
Layout: Boardroom
Capacity: 48



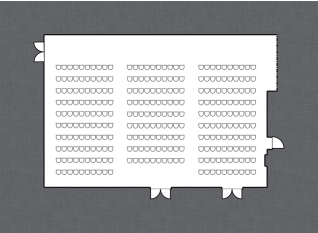
Layout: Classroom
Capacity: 144



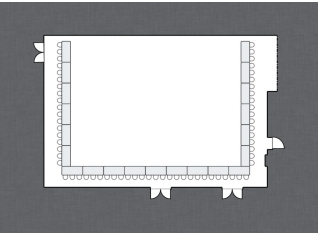
Layout: Hollow Square
Capacity: 72



Layout: Reception
Capacity: 250



Layout: Theater
Capacity: 288



Layout: U-Shape
Capacity: 63

**Claremont Club & Spa, A
Fairmont Hotel**

Empire Ballroom

Lobby Level
4,205 Square Feet
512 People

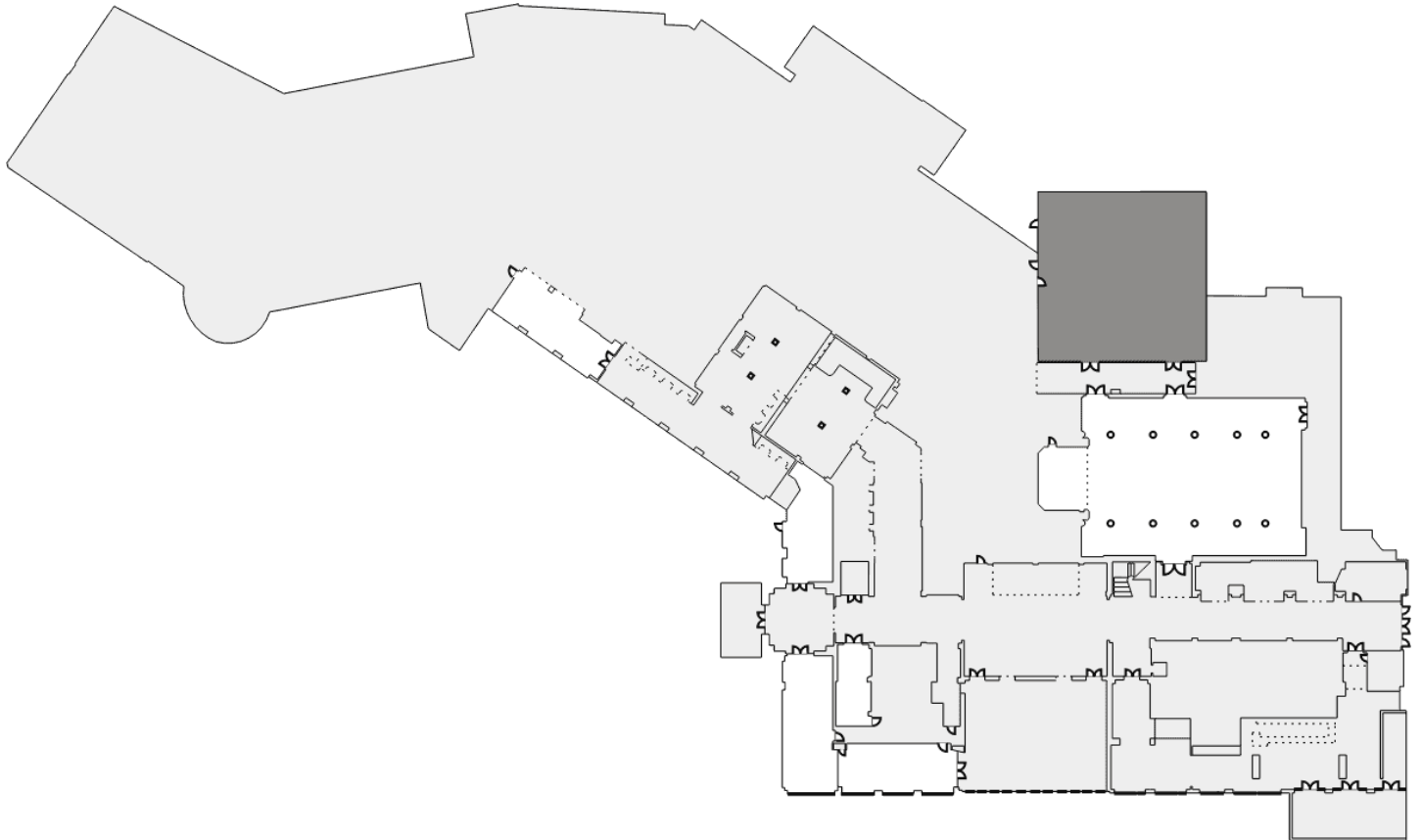
Space Discovered By

syedh@aiche.org

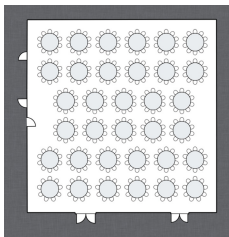
📍 Claremont Hotel & Spa,
Berkeley, CA 94705, USA



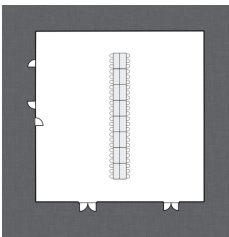
[Explore Online](#)



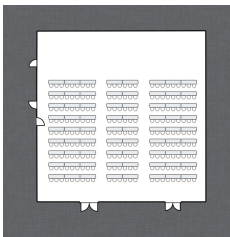
Empire Ballroom Layouts



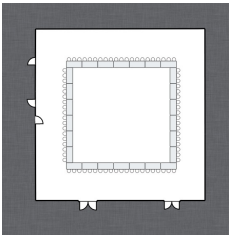
Layout: Banquet
Capacity: 348



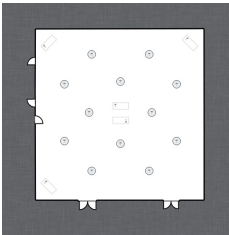
Layout: Boardroom
Capacity: 48



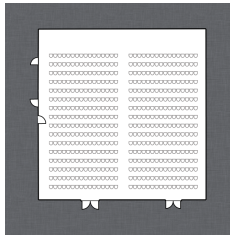
Layout: Classroom
Capacity: 216



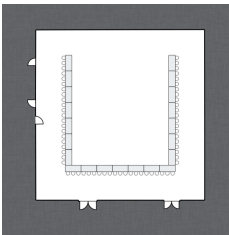
Layout: Hollow Square
Capacity: 78



Layout: Reception
Capacity: 480



Layout: Theater
Capacity: 512



Layout: U-Shape
Capacity: 63

**Claremont Club & Spa, A
Fairmont Hotel**

Claremont Ballroom

Lobby Level
5,585 Square Feet
480 People

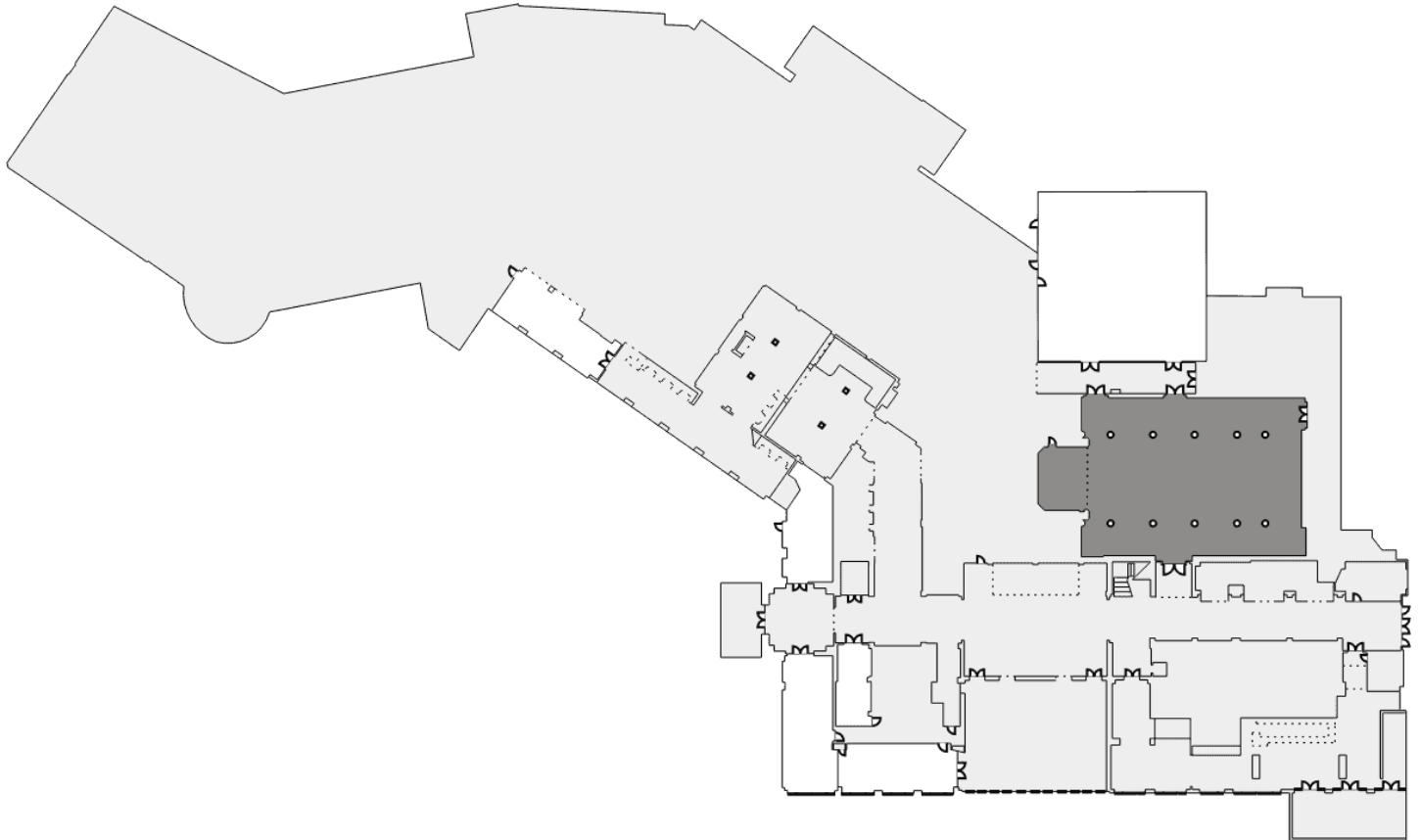
Space Discovered By

syedh@aiche.org

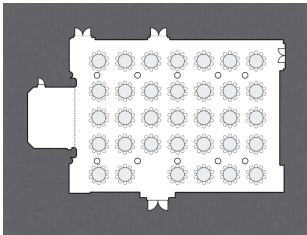
📍 Claremont Hotel & Spa,
Berkeley, CA 94705, USA



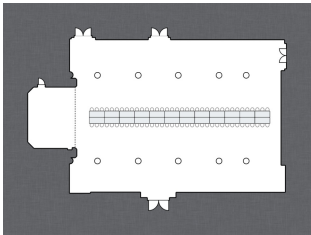
[Explore Online](#)



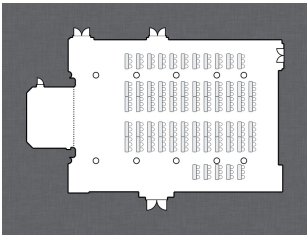
Claremont Ballroom Layouts



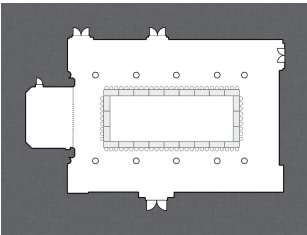
Layout: Banquet
Capacity: 336



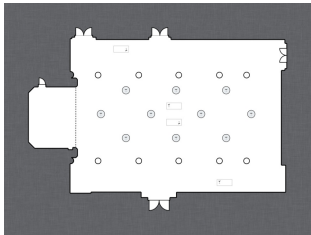
Layout: Boardroom
Capacity: 72



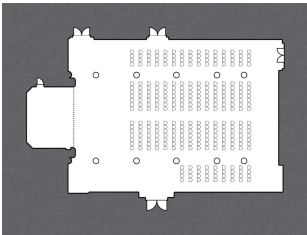
Layout: Classroom
Capacity: 192



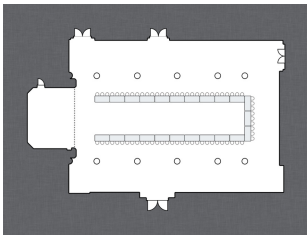
Layout: Hollow Square
Capacity: 72



Layout: Reception
Capacity: 480



Layout: Theater
Capacity: 308



Layout: U-Shape
Capacity: 69