

# ICBE

## Newport Beach • CA

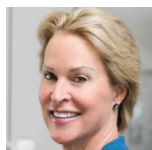
January 6-9, 2019  
Newport Beach Marriott Hotel & Spa  
Newport Beach, CA

ICBE brings together researchers who are using quantitative approaches to advance the understanding and application of molecular biology.

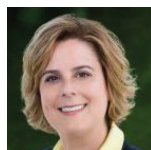
### SESSION TOPICS

- Synthetic biology
- Metabolic engineering
- Genome engineering
- Protein design and engineering
- Plants and agriculture
- Cell-free systems
- Cellular devices and circuits
- Microbiome research

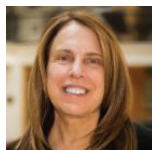
### KEYNOTE SPEAKERS:



Frances H. Arnold  
California Institute  
of Technology



Jennifer R. Cochran  
Stanford University



Pamela Silver  
Harvard University



Christina Smolke  
Stanford University



**SUBMIT YOUR ABSTRACTS BY  
NOVEMBER 6, 2018**

[www.aiche.org/icbe](http://www.aiche.org/icbe)

ORGANIZED BY:



### INVITED SPEAKERS:

- Hal Alper  
*The University of Texas at Austin*
- Matthew DeLisa  
*Cornell University*
- Farren Isaacs  
*Yale University*
- Mo Khalil  
*Boston University*
- Tanja Kortemme  
*University of California, San Francisco*
- Elizabeth Sattely  
*Stanford University*
- Ophelia S. Venturelli  
*University of Wisconsin-Madison*
- Harris Wang  
*Columbia University*
- Ron Weiss  
*Massachusetts Institute of Technology*

### CONFERENCE CHAIRS:

- Stephanie Culler  
*Persephone Biome*
- Michael Jewett  
*Northwestern University*

### ORGANIZING COMMITTEE:

- Hal Alper  
*The University of Texas at Austin*
- Julie Champion  
*Georgia Institute of Technology*
- Matthew DeLisa  
*Cornell University*
- John Dueber  
*University of California, Berkeley*
- Farren Isaacs  
*Yale University*
- Steve Laderman  
*Agilent Technologies*
- Josh Leonard  
*Northwestern University*
- Emily LeProust  
*Twist Bioscience*
- Michelle O'Malley  
*University of California, Santa Barbara*
- Kristala Jones Prather  
*Massachusetts Institute of Technology*
- Danielle Tullman-Ercek  
*Northwestern University*