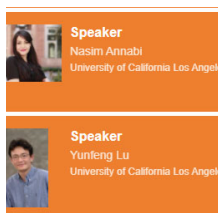


## Stories in this newsletter



AIChE Annual Meeting  
Nov 16-20, 2020



NSEF Award Winners  
2020

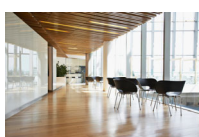


Annual Business Meeting and Open Leadership Positions



Message from the Chair

## AIChE Annual Meeting



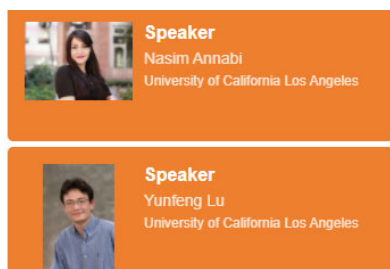
We are looking forward to a great line-up of talks at this year's VIRTUAL conference. Many are in a PreRecorded+ format where the talk is available on demand but there is a scheduled time to come and ask questions with the presenters. There will also be a poster gallery, again with accompanying recorded talks.

Here is a [link](#) to the NSEF affiliated sessions. Note all times are in PST.

Here is a [link](#) to register for the virtual conference.

Hope to 'see' you at the conference..

## NSEF Award Winners



If you are missing that personal connection at a virtual conference, come to the NSEF **LIVE** Plenary session at the annual conference and learn about the accomplishments of this year's NSEF award winners.

10:30 AM Nov. 18 in the vFairs Auditorium

Prof. Nasim Annabi UCLA

Prof. Yunfeng Lu UCLA (Young Investigator)

## Get involved! Business Meeting and Open Leadership Positions



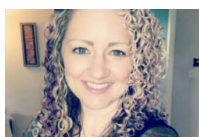
NSEF is a vibrant community of nanoscale researchers and practitioners. Come to the business meeting following the Plenary session (above) and see what we have planned for the coming year.

12:00 PM Nov. 18 in the vFairs Auditorium

ALSO—we are seeking nominations (self-nominations are accepted) for elected positions including Vice Chair, Secretary-Treasurer, and 2 At-Large Members. These positions are two-year commitments (except for the Vice Chair).

Email [reuel@iastate.edu](mailto:reuel@iastate.edu) for more information. Submissions are due by **November 30, 2020**.

## Message from the Chair



Dear NSEF Members,

It's amazing to me that our annual meeting starts in just a few short days. NSEF has many great sessions going on during the meeting, and we hope you are able to join us virtually for these top-notch nanotechnology-related events. In addition, this year new leadership is being elected for NSEF, so if you're interested in a position, feel to reach out to me at [smeenach@uri.edu](mailto:smeenach@uri.edu). I know this year has been challenging for many of us, and I wish each and everyone one of you good health in the weeks and months to come.

All the best,

Samantha Meenach, Ph.D.

NSEF Chair