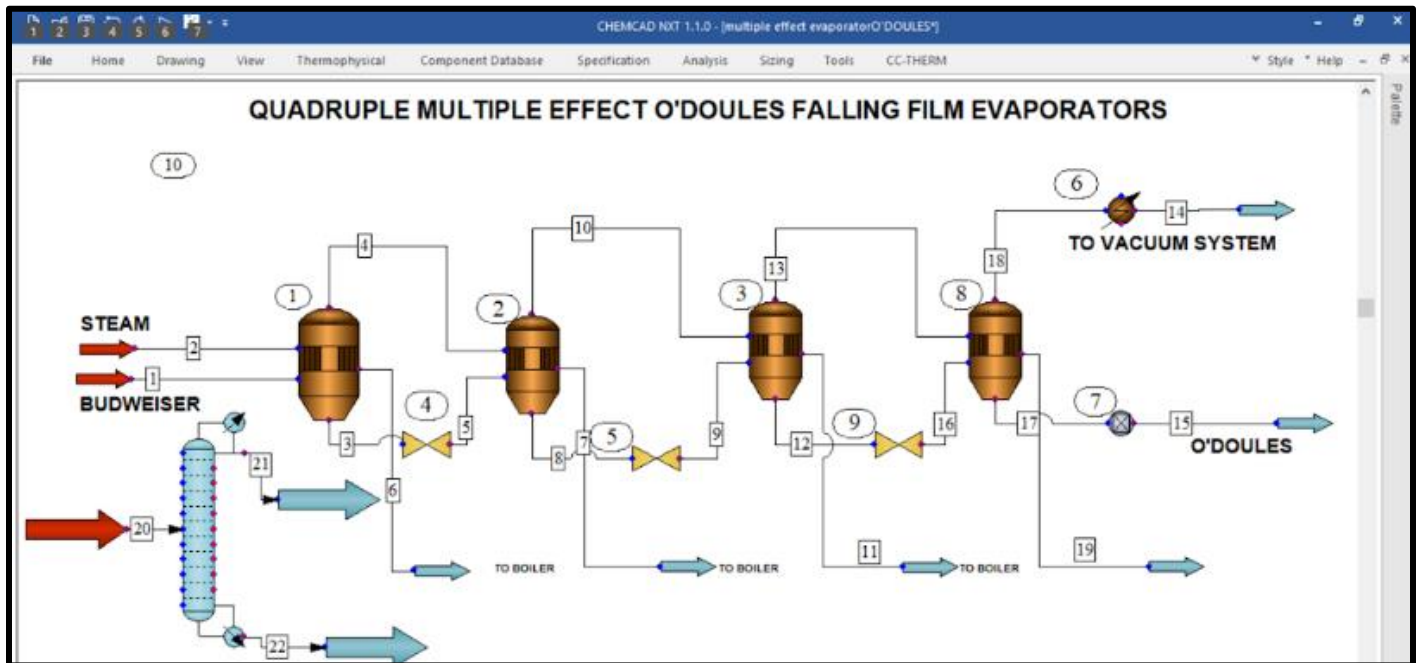


ChemCad Process Simulation of a multi effect evaporation of O'Doul's Beer to remove alcohol

By: Ben Horwitz



Chris Wirth,

The attached simulation model is what I will be using in conjunction with Joe Yurko. Unfortunately, it is a Chemcad based simulation so you will not be able to share it with the class, since they were trained on a different simulator platform. But if they are ambitious, they could still set it up.

Sincerely,

Ben Horwitz