

AICHE Local Section Vision Statement

(2019-2020 AICHE Steering Committee Photo Above (left to right): Joseph Spagnuolo (Vice Chair), Gary Peck (Secretary), Charles Roe (Past Chair), Sam Datta (Treasurer), Michael Galgoczy (Chair), Art Lazar (Chief Information Officer), Joseph Yurko (Newsletter Editor), Amani Dakdouk (Webmaster), John Juchnowski (Young Professionals Chair))

AICHE Local Sections serve as the lifelong professional home for AICHE members in all sectors of chemical engineering. Each AICHE member is affiliated with one or more Local Sections, and for many, the Local Section is the most personal and accessible point of contact for professional support from AICHE. Local Sections, with the oversight and guidance of the Local Section Steering Committee, exist to provide support in the areas of career and leadership development, continuing education, networking, and supporting the local community. Every Local Section provides the best support possible by taking into account the local interests and needs of its members. In-turn, Local Sections depend on dedicated volunteers to support programming and pay dues. With this support, Local Sections can remain active and thriving and provide benefits to members that far outweigh the costs of membership such that all AICHE members will participate in Local Sections. As Local Sections continue to grow, all Local Sections will strive to be self-sustaining, highly relevant to all AICHE Members, and advanced in the use of information technology (web and social media) to reach out to the community and members with more value.

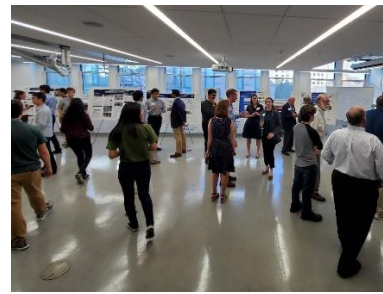
AICHE Judging of North East Ohio Science & Engineering Fair (NEOSEF), CANCELLED in 2020 due to COVID-19 Pandemic

The Cleveland AICHEI Section annually judges the NEOSEF that is held at either Cleveland State University or John Carroll University. They will award 7 to 8 high school students with certificates and \$100 check awards for their subject matter.



Monthly Meeting Events with AICHE Cleveland Section

Each month during the school year the AICHE Cleveland Section holds a meeting on various technical, social, and plant touring Topics. Monthly events are posted on the CTSC Monday Email notification system for your general interest in attending.



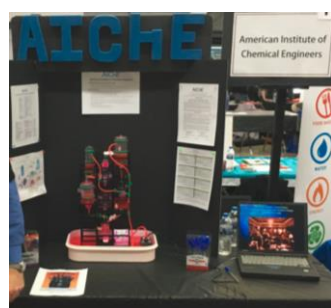
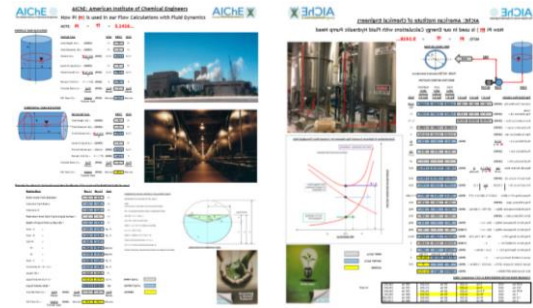
AICHE Student Chapter, Department of Chemical and Biomedical Engineering, Washkewicz College of Engineering

Cleveland State University (Annual AICHE certificates and \$200 check awards for Leadership & Academics). AICHE Student Chapter with AICHE Cleveland and a "Lunch & Learn" Good Engineering Practices for cGMP Pharmaceutical Facilities with 12 presentations, certificate program 15 Student Certificates awarded 2019 Fall Semester from AICHE / Xellia Pharmaceuticals. This program prepared students, postgraduation for job interviews in FDA regulated industries requiring cGMP compliance. Award



AICHE & CTSC Pi DAY Public Outreach, Engineer's Week event at Great Lakes Science Center, Cleveland, CANCELLED COVID-19

Event provided career guidance to Cleveland students in grades 7 through 12 interested in engineering (chemical). Show how Pi ties into chemical engineering work when calculating tank volumes, piping stream velocities, pump horsepower and C-Footprint.



AICHE Young Professionals Summer Trivia Program at several locations across Cleveland Area

John Juchnowski, Young Professional Chair has coordinated an outreach program to YPs for this event with YPs working in Industry and graduate students that are interested in activities in the "summer mode" (Trivia).

