



Baton Rouge Newsletter

Year 26, Number 6

www.aiche-br.org

February 1, 2016

February Tour of Abita Springs Brewery	2
January Meeting Recap	3
4 th Annual Industry Panel Recap	4
Call for nominations for Coates Award	5
From the Chapter Chair's Pen	5
2016 Section Contacts	7

The *AIChE Baton Rouge Newsletter* is published monthly, from September to June, by the AIChE Baton Rouge Section, 110 Chemical Engineering, LSU, Baton Rouge, LA 70803. It is distributed free of charge to members of the Baton Rouge Section of the American Institute of Chemical Engineers.

Membership Fee: \$15.00/yr.

February 2016 Meeting

Date: Saturday, February 20, 2016

Place: Abita Springs Brewery Visitor Center, 166 Barbee Road, Covington, LA,
Phone: 985 893 3143

Speaker: **Jaime Jurado**, Director of Abita Springs Brewery Operations

Agenda: 8:20 AM – Meet for carpool at O'Neal Lane Carpool Lot, O'Neal at I-12 (exit 7)
8:30 AM – Carpool leaves for Covington
10:00 AM – Tour starts
7:30 PM – Meeting adjourns

Cost: No food will be provided.

See directions to the brewery on Page 2.

RESERVATIONS

Please make your reservation with chapter secretary, Donna Bryant, **by 5:00 PM on Thursday, February 18th** at donna.bryant@syngenta.com

Invite a friend. You can show up at either the carpool meeting place or the brewery

Professional Engineering Certification

The subject of this meeting is an acceptable activity for continuing Professional Development as defined by LAPELS and is **approved for one (1) PDH unit**.

The Baton Rouge AIChE chapter is NOT responsible for individual record keeping of PDH credits. Certificates must be obtained at the meeting by the individual.

Other Upcoming 2016 Events / Speakers

April Dinner meeting at LSU Faculty Club. Speaker to be announced.

If you or your colleague(s) would like to give a technical presentation at an upcoming chapter meeting for 2 professional development hours (PDHs), please contact Chapter Chair, William Buck, at William.Buck@WinkEngr.com to schedule a meeting date and time.

One of the greatest discoveries a man makes, one of his great surprises, is to find he can do what he was afraid he could not do.
Henry Ford.

Tour of the Abita Springs Brewery

The February meeting consists of a tour of the Abita Springs Brewery. The tour will be led by Jaime Jurado the Director of Brewing Operations at Abita Springs. The tour is expected to start promptly at 10:00am and who knows Jaime has indicated we may get a chance to do some in process tasting. Abita Springs Brewery was founded in 1986 and produces over 16 brands of beer such as Amber, Turbodog, Bayou Bootlegger Hard Root Beer, and Purple Haze, and produces two well-regarded soft drinks with no alcohol. Please RSVP directly to Donna.Bryant@syngenta.com.

Jaime Jurado, Tour Guide

Jaime, a Senior AIChE member, recently joined Abita in 2013 after working as a brewery engineer, Master Brewer and Brewing Director since 1982. He built a \$5.5million artisanal brewery where everything that touched the beer was a novel installation. Jaime has studied in Bavaria learning the craft, and has worked in Britain and in Ireland. He holds a Masters in Electrical Engineering and a Bachelors in Chemical Engineering. While he chose to depart to commission what was then the most advanced brewery in Asia (Rajasthan Breweries Limited in India), Jaime was a Doctoral candidate at the Engineering Science Department at Oxford University for three years and has several peer-reviewed publications on his work in ultrafiltration modeling. . Jaime has given AIChE and IChemE seminars at a dozen universities in the US, Europe and in Australia, and last presented his research at the AIChE Fall Meeting in San Francisco in 2012

Directions to the Abita Springs Brewery

Take I-12 East. Exit at US-190 North (Exit 63) (about 55 miles). Continue on US-190 W then bear right on to US-190 Business turning onto LA-21 (about 4 miles). Continue to bear right and take LA-36 east to Barbee Rd (about 1.7 miles). Plan to arrive 10 minutes early as tour starts promptly at 10:00am.



January Meeting Recap



The Baton Rouge AIChE Chapter started out 2016 with a bang by meeting at Mezzo Technologies for the January meeting. The turnout for the meeting was great, with the conference room having standing room only.

Mezzo Technologies is a microtube exchanger company which started by bright minds that met in the LSU Mechanical Engineering Department. They manufacture a wide variety of products for the automotive, military, and aerospace industries currently and are looking to expand in other ones. Kevin Kelley, the president of Mezzo Technologies, presented the various Mezzo Technology products, passed around examples, and then gave a tour of the facility to the group. As our large group followed Kevin through the facility, we saw firsthand the process for each exchanger's conception, going from the material layout area, to the machine shop, the installation area, and then finally the shipping area. The exchangers were really impressive to see since the tubes' internal diameters were sometimes almost thin as a needle's point. Throughout the presentation, there was also discussion about other various applications for the microtube exchangers in the chemical industry. Some possibilities mentioned were for compressor oil coolers and sample lines, since a 'clean' service is required to go through the exchangers themselves. While this is the case now, Kevin mentioned that Mezzo Technologies is starting to offer exchangers with a larger tube internal diameter.

Overall the meeting was a success since there was great food (cooked for us by Mezzo Technologies), good discussion, and an interesting tour of the facility. If you would like to see more about Mezzo Technologies, check out their website at: www.mezzotech.com .

Donna Bryant, Secretary

4th Annual AIChE Industry Panel Recap...

On Thursday, January 23rd, our chapter hosted our annual industry panel with the LSU AIChE chapter in Tureaud Hall on the LSU campus. In spite of the thunderstorms and heavy rains, all 13 of the panel members convened for, and about 50 students listened to, a great discussion of career insights and the many doors that chemical engineering opens.

The students wasted no time shortly after 7 PM to ask the panel multiple questions: What was the biggest adjustment from school to work? How does an international student go about getting a job? How is chemical engineering applied to the nuclear energy industry?

Responses to those and other questions led to a lively conversation with many quotable moments. For example, recent LSU graduate Allen Huang of CB&I recognized quickly how much there was to learn in his current position, stressing that “Documentation is key!”, while Dr. Marilou Nabatilan of Wink Engineering advised students, “Be able to communicate what you can and cannot do.” During a more serious portion of the panel, LSU Professor Louis Thibodeaux, in reference to [the recent NY Times Magazine article on DuPont's environmental lawsuit](#), proclaimed to the students, “Environmental engineers control what chemical engineers do. You can’t mess up!” In response, Pamela Baldwin of Jacobs Engineering remarked, “I put my knowledge into ways... to drive industry to clean the Earth up.”

As host, I asked the students to share some of their thought about previous internships, with a consensus emerging that while they were certainly great exposure, “companies can do better in taking on mentees” during them. I also inquired of the other panelists how chemical engineers differentiated from other engineers in their workplace. Ashley Morel (a confessed “clanky”) of Dow acknowledged, “We all have the same goal to keep the business up and running but have different approaches” to it, while Ceri Griffiths of AMEC Foster Wheeler recommended to the students, “Interact with other engineers as much as you can.”

By 8:45 PM, the evening concluded with an exciting buzz in the air from everyone, as some happily stuck around to network and continue to get some panelists’ feedback. With anticipation for the 5th annual panel next year already planted, the Baton Rouge chapter would like to thank and acknowledge all of this year’s panelists for their participation:

- **Pamela Baldwin, P.E.** – *Principal Process Engineer* (Jacobs)
- **Donna Bryant, E.I.T.** – *Capital Projects Process Engineer* (Syngenta)
- **Ceri Griffiths** – *Senior Process Engineer* (AMEC Foster Wheeler)
- **Neal Grob** – *Process Engineering Manager* (Rubicon)
- **Allen Huang, E.I.T.** – *Process Engineer* (CB&I)
- **Cori McClarin** – *Production Engineer* (Olin Blue Cube)
- **Ashley Morel** – *LHC3 Maintenance Engineer* (Dow)
- **Dr. Marilou Nabatilan, P.E.** – *Senior Process Engineer* (Wink Engineering)
- **Dr. Julia Pence** – *R&T Engineer III, Process Development* (Albemarle)
- **Ravali Polala, E.I.T.** – *Variable Operating Cost Analyst* (ExxonMobil)
- **Stephen Reilly, P.E.** – *Consulting Engineer* (ProSys)
- **Clark Snyder, P.E.** – *Senior Staff Process Engineer* (Hargrove Engineers & Constructors)
- **Dr. Louis Thibodeaux** – *Emeritus Professor of Chemical Engineer* (LSU)

Stephen Reilly



Call for Nominations for Coates Award

We are currently taking nominations for the Coates Award. We will take nominations until March 1st. A completed Information Sheet (on Page 8) must be submitted for official nomination. The selection will be made on the following basis:

The basis for the award shall be outstanding performance in, and contributions to, the profession of chemical engineering (this year is the Chemical Engineering year). Consideration shall be given to the overall eminence of the nominee in his or her chosen field, to quality and number of publications, to achievements in teaching, research, or technical administration, to the caliber of work, and of offices held in either ACS or AIChE, and to the general excellence of contributions to community activities. Each area, namely (1) Contributions to the profession of chemical engineering, (2) Society Activities, and (3) Community activities, shall be accorded equal weight in selecting the recipient of this award. Also, consideration shall be given only to comparatively recent achievements.

Among the suggested community activities the following are examples:

Science Fairs	Boys and Girls Work Sports
Radio and TV Work	Junior Achievement
Chemical Progress Week	Service Club Work
Chamber of Commerce Work	Spiritual and religious activities

Please contact Joseph.Dalferes@Jacobs.com with nominee Information sheet completed by March 1st. Another similar format shall be acceptable if all of the information required on the Information Sheet is included in the document submitted.

From the Chapter Chair's Pen

I am reminded this month a quote from General George S Patton, "Don't tell people how to do things, tell them what to do and let them surprise you with their results." This is a great philosophy to embrace in leadership. It's especially important with experienced and motivated individuals to get out of their way and let them do their jobs. Our AIChE chapter leadership is made of motivated volunteers and for this I am thankful and grateful for the hard work each person puts into the chapter. January's LSU Industry panel was a great success despite the driving rain and storms thanks to the dedication of Stephen Reilly our past chair. Armando Corripio has grabbed hold newsletter process and taken command again to produce a quality product and get the word out about upcoming events we are thankful for his years of experience as newsletter chair.

In February, we have arranged something special with regards to our regular meeting. Instead of the Thursday night meeting we will have a group outing on Saturday the 20th to Abita Springs Brewery. Jaime Jurado a Senior AIChE member and director of operations at Abita will give us a minimum 60 minute tour or perhaps 90 minutes. Having a couple of plant tours during the year is one of the objectives I would like to meet this year for our membership. They can be a good platform for engineers to learn about different processes.

Finally, we are still in need of some additional volunteers to staff our leadership committees. We have openings for our education and nominations committee lead. If you are interested in serving on any of these open positions we would be glad to have you participate.



Gonzales, La. - Lake Charles, La. - Beaumont, Tx.

The Gulf Coast Industrial Expo was organized as a way for
Business, Industry and it's Suppliers to connect.

FEBRUARY 2ND

Clarion Inn Conference Center & The Lamar Dixon Expo Center
(Gonzales, La)

GCIExpo
Gulf Coast Industrial Expo

- ★ Technical & Practical Conferences
- ★ Indoor & Outdoor Display Booths
- ★ Live Demonstrations
- ★ Trailer Display Space
- ★ Advertising Opportunities
- ★ Food & Beverages
- ★ Live Music

Home of the World's Largest Concentration of
Industrial Industry - The Gulf Coast

For More Information: 225-276-8399 • Email: info@gciexpo.com

150 years

 **BASF**

We create chemistry

2016 Section Contacts

Officers

Chair: William Buck, William.Buck@WinkEngr.com
Vice Chair: W. Clark Snyder, WClarkSnyder@hotmail.com
Secretary: Donna Bryant, Donna.Bryant@Syngenta.com
Treasurer: Oscar Alfaro, Oscar.Alfaro@Jacobs.com

Executive Committee Members

Glenn Bryson BGBryson@BellSouth.net
Jimmy Orr Jimmy.Orr@Jacobs.com
Noel Ricord LCNoel55@aol.com
Stephen Reilly stephen.reilly@prosys.com
Armand Melikyan Armand.Melikyan@WinkEngr.com

Committees

Awards: Dal Dalferes, Joseph.Dalferes@jacobs.com
Communications: Brandon Lithgoe, blithgoe@Yahoo.com
Education: (OPEN)
High School Grants: W. Clark Snyder, WClarkSnyder@hotmail.com
Membership: Glenn Bryson, BGBryson@BellSouth.net
Newsletter: Armando Corripio, Corripio@LSU.edu
Nominations: (OPEN)
Professional Development: Randy Goodman, Randy.Goodman@LA.gov
Seminars: Jimmy Orr, Jimmy.Orr@Jacobs.com
Sponsorship: Stephen Reilly, Stephen.Reilly@Prosys.com

Why Should You Join the Local AIChE Chapter?

1. It is a welcoming presence to new chemical engineers in the area.
2. It provides a neutral ground mentorship toward career directions and other life topics.
3. It facilitates a better understanding of local, state, and federal policies related to our professions.
4. It offers a smooth transition for graduating chemical engineers from LSU, ULL, and other nearby universities who start working in the area.



ALARM
MANAGEMENT



OPERATOR
INTERFACE



ADVANCED
CONTROL



CONSULTING
SERVICES

Do you have what it takes? Do you want to make a difference? Tired of going to the same place each day? Seeking a change in your routine? Make your voice heard – Join us.

ProSys is hiring! We're looking for:

Experienced chemical / process / control engineers
Control system (DCS, PLC) experts
Engineers who challenge themselves and mentor others
YOU!

No experience in alarm management or control systems? Don't worry.

Process knowledge is your most important asset. Experience with processes in the refining, petrochemical and specialty chemical industry are what we're looking for.

Connect with us: [in](#) [t](#) [f](#) [g+](#) [u](#) [b](#)

ProSys is small enough to care, but big enough to make an impact. We assist the industry by optimizing processes, increasing safety and reliability for their plants with our products and services. We do that by hiring the smartest and brightest. Join our team.

Recruiting@Prosys.com

Maximize your experience. Maximize your process. Maximize at ProSys.

INFORMATION SHEET FOR NOMINATIONS FOR THE COATES AWARD

Nominators may use this information sheet, or they may provide the same information in a different format.

A. Curriculum Vitae

1. Name: _____
2. Age: _____
3. Discipline, degrees, years: _____
4. Employment history, including positions: _____
5. Professional years in Baton Rouge (specific years): _____

B. Contributions to the Profession (include dates where practicable)

1. Number of patents and publications: _____
2. Awards and honors: _____
3. Achievements in teaching, research, technical administration, and other contributions to the profession: _____

C. Society Activities (include dates where practicable)

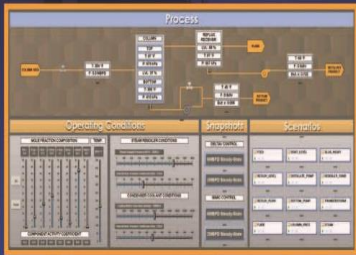
1. Memberships: _____
2. Offices held: _____
3. Other contributions: _____

D. Community Activities (include dates where practicable)

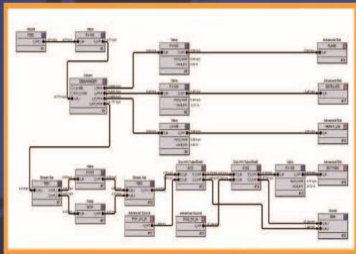
1. Religious: _____
2. Civic: _____
3. Other: _____

mimic

Dynamic Modeling



Fast, Easy, Flexible



Life Cycle Results

 @MYNAHTech •  /MYNAHTechnologies

www.mynah.com

+1.636.728.2000



M Y N A H

Advertise your business, post career opportunities, and more here!

The Baton Rouge AIChE chapter welcomes sponsorships from all industries year-round.

For more information, contact our Sponsorship Committee Chair today!



ON THE LIGHTER SIDE

Words of Our Time

Internet (*n.*) the cocoon of blankets and pillows you gather around yourself while spending long periods of time on the Internet.

Textpectation (*n.*) the anticipation felt when waiting for the response to a text.

Unkeyboardinated (*adj.*) when you are unable to type without repeatedly making mistakes.

