

“Our History”

Mid-Michigan Section Of The American Institute Of Chemical Engineers

1952 - 1983

As Part Of

SEVENTY-FIVE YEARS OF PROGRESS





Mr. Donald L. Beshgetoor
1423 Clover Ct.
Midland, MI 48640-3364

HISTORY OF AIChE MID-MICHIGAN SECTION

TABLE OF CONTENTS

DEDICATION

FORWARD

PROSPECTUS

PROLOGUE

SECTION HISTORY

RECAP

REFLECTIONS

RECOLLECTIONS

SECTION LEADERS

DEDICATION

The Mid-Michigan Section of the American Institute of Chemical Engineers dedicates this "Our History" as part of the AIChE's 75 year heritage.

FORWARD

Since history is the record of people in action and the people, places and occurrences they remember, we have collected these recollections as one Section of "Our History".

We have tried to present this story so that it develops detail as it goes along. Readers need only pursue it as far as their interest takes them.

The Section wishes to thank Ms. Carol Ivan for a stupendous typing job, to Ms. Kristine Beehr for picture layout, and the Dow Corning Corporation for use of its facilities in the preparation of this history.

EDITOR:

Wm. D. Kuhlman

PROSPECTUS

Plans for 1983-84

Plans for the 1983-84 year are progressing rapidly. The kick-off meeting is scheduled for September 20, and will be a 'beer and pretzels' type of evening. The featured speaker will be Dr. James Y. Oldshue, General Chairman of the 1983 Diamond Jubilee Celebration and a past National Chairman of AIChE. He will speak on "Our Role in America's Future", examining current positions on energy, acceptable risk for society, and some principles of economics which come into play.

In October we are co-sponsoring with the Detroit Chapter a one-day statewide Diamond Jubilee Symposium. There will be morning and afternoon technical sessions by participating universities and industries, a luncheon featuring Professor Emeritus Donald Katz from the University of Michigan, a Chemical Engineering Hall of Fame, and an evening reception to be held in the Historical Museum of Detroit.

We are cooperating with the Saginaw Valley Chapter of Professional Engineers on a joint program with a political orientation. The impact that Chemical Engineers can make by working through and with our political organizations is a key area that needs further development.

There will be one or more meetings with an environmental slant, another key area in today's society and one that is misunderstood and under-communicated. An annual event has been a joint meeting with the Michigan State University student chapter. This gives the students a chance to interface with practicing chemical engineers as well as to see something of the inside workings of industry.

There will also be several other events. These include a "Mini-Chem. Show", some type of short course or continuing education program, and additional career guidance opportunities. A social dinner theater evening has also been a popular event in past years and will be part of our program.

We are looking forward to a good year, with both a social and an educational aspect to all our programs. We will also take advantage of our opportunities to communicate and publicize what chemical engineering is all about, to increase understanding of the general public.

D. L. Beshgetoor
Chairman 1983-84

PROLOGUE

Tom Griswold Jr. Remembers:

"I had told my brother-in-law Herbert (H. H. Dow) that several engineers who were involved in the business of making chemicals were getting together in New York to talk about mutual interests and problems. I thought it was a good idea and I suggested that I join them. As I recall, this was in 1907. I doubt if there is a formal record of this meeting.

"Well, HH wasn't too enthusiastic. In fact, he pointed out that there wasn't any company money available and that I would have to pay my own way. I guess he was also a bit suspicious of those 'Easterners'. He told me to watch out for those fellows.

"I thought about HH's warning the first night when a group of us went to dinner in the hotel dining room - a pretty classy place. I ordered the cheapest item on the menu and avoided those Blue Point oysters. Well, when the check came around, the group suggested that the check and tip be split evenly among all us diners. I guess I sort of choked up and any objection I might have had got lost.

"There did seem to be a good reason to form a group that would be called Chemical Engineers, since we had a lot of common interest problems and thought an organization would be a good idea.

"It so happened that was the time that H. H. Dow and I had developed a chlorine cell back in Midland that was different than any other. It worked pretty good so we had just applied for the patents. Well, one of the prominent Eastern engineers was asking me all kinds of detail questions about the cell. I tried to avoid answering as tactfully as I could, but he persisted. Finally, I outright told him the patent was pending and that I wouldn't answer any of his questions. It's my belief that this fellow was the big reason for the founders not inviting me to be a charter member. I was elected, however, on Nov. 16, 1908, as the 70th National member.

"It wasn't until 1917 that I was able to convince H. H. Dow into joining AIChE."

This was the story passed on by Tom G. Griswold, Jr., the first engineer hired by H. H. Dow. Tom was an innovative engineer and a superb mechanic. He was made Honorary Chairman of the Midland Section on September 25, 1956, with the presentation by Dr. Donald Katz of the University of Michigan. He had served as Director of the Institute in 1915 and chaired the Patent Committee from 1934 to 1938. Tom passed on in 1967 at the age of 97. A few years before he passed on, TG Jr. recollected many of his experiences in a memorable informal talk before the local section.

AIChE Directors, Herbert H. Dow and Willard H. Dow

H. H. Dow (1866-1930) was elected a National AIChE Director in 1919. His son, Willard H. Dow, who took over the reins of the Dow Chemical Company from H. H. Dow, became a member in 1926 and was a Director in 1932 and 1933. Willard Dow (who died in March 1949 in a plane crash on the way to MIT to meet and hear Winston Churchill) had recruited members such as M. E. Putnam and W. R. Collings. They, in turn, contributed much to the National AIChE.

Mark Putnam Cites Benefits of AIChE and Suggests Local Section

Dr. Noland Poffenberger, who later became the first chairman of the Midland Section, recalls that Dr. Mark Putnam had pointed out to him the impact that resulted from a worldwide AIChE engineering conference in London that he attended in 1936 at Willard Dow's suggestion. The contacts and friendships developed on the boat trip contributed greatly to his success later as a Dow executive and was extremely valuable during WW II when a few phone calls were able to quickly pull together diverse resources to help get the critical synthetic rubber programs producing.

Dr. Putnam became a Director of AIChE in 1942. It was sometime later, upon his return from a National meeting that, encouraged by Bill Schuette, he called a meeting with AIChE members Poffenberger, Bill Williams, Ralph Hunter and Ted Heath. It was agreed that Midland might now have enough members around, and that with student members now coming to Midland regularly, the time was right to start a local AIChE Section.

In appreciation of his long and devoted service to The
American Institute of Chemical Engineers
the Midland Section has elected as its honorary chairman

Thomas Griswold Jr.

First Institute member from The Dow Chemical Company,
elected November 16, 1908, and seventieth in the Nation.
A director of the Institute in 1915.

Chairman of its Patents Committee from 1934 to 1938,
and member of the Committee from 1934 to 1943.
Builder of engineering skills and progress.
Patron, friend, and member of the Midland Section.

Presented this Twenty-
fifth day of September,
Nineteen Hundred and
fifty-six.

Walter F. Whitman
RESIDENT AICG

W. L. Crump
SECRETARY AICG

C. D. DeBord
CHAIRMAN MIDLAND SECTION AICG



SECTION HISTORY CAPSULE

Noland Poffenberger recalls that following up on M. E. Putnam's suggestion, he, Ken Coulter, John Corey, Ralph Prescott, Ernest Mitchell, John Wardwell, Vic Morello, Frank Landee, Max Key, and Ed Sprague started things going.

At a National meeting with the then Executive Secretary, Tyler, Poffenberger pulled together the information needed to start the new Section. Application was made.

The first meeting of the Midland Section (in formation) was held September 19, 1951. 43 people were present. The chairman of the nominating committee, S. B. Heath, presented the first slate of officers who were promptly elected. The officers were:

Chairman - Noland Poffenberger

Vice-Chairman - John Corey

Secretary-Treasurer - J. H. Kapnicky

Executive Committee - Ralph Prescott and K. E. Coulter (to become National President in 1975)

A letter from Executive Secretary S. L. Tyler, dated November 18, 1952, formally notified that the local Section was now officially the Midland Section of the American Institute of Chemical Engineers. 104 Institute members and 35 non-members were listed on the Section mailing list at that time.

The Section membership was, and is, composed primarily of engineers from the Dow Chemical Company and the Dow Corning Corporation. Realizing that the Section served a broader base than Midland, and the two corporations, the name was changed in 72-73 to the Mid-Michigan Section. Chemical engineers from Baker-Perkins, Inc. in Saginaw have been strong supporters of the Section. Membership at the end of 1982 reached 482.

Over the 31 years that the Section has been organized, there have been many achievements. Activity in some areas has cycled with the economic climate, but a strong ongoing program has on the overall been maintained.

American Institute of Chemical Engineers



OFFICERS - 1952
 PRESIDENT
 WILLIAM I. BURT
 VICE-PRESIDENT
 WILLIAM T. NICHOLS
 SECRETARY AND
 EXECUTIVE SECRETARY
 STEPHEN L. TYLER
 TREASURER
 C. E. DELONG
 PAST-PRESIDENT
 THOMAS H. CHILTON

Office of the Executive Secretary
 150 EAST 41ST STREET
 NEW YORK 17, N. Y.

DIRECTORS
 ROBERT E. HOLLENDER
 CHARLES S. ALLENBACH
 WILLIAM S. DIEHL
 RALPH W. BRICK
 ROBERT C. BURNHAM
 H. PAUL RIFE
 CHARLES S. BURNHAM
 EARL S. STEVENSON
 ARTHUR C. DOOLITTLE
 JAMES C. KERRY
 PHILIP H. BURNHAM
 J. HENRY BURTON

CERTIFICATION? REGISTRATION?
 UNIONIZATION?



November 18, 1952

Mr. John H. Wardwell
 Strosser's Laboratory
 Building 5-258
 The Dow Chemical Company
 Midland, Michigan

Dear Mr. Wardwell:

This refers to yours of October 24 in which you make application to the Council of the Institute for affiliation in local section status.

I am happy to advise you that on recommendation of C.E. Ford, Chairman of the Local Sections Committee, the Council approved the application from the Midland Group to be known as the Midland Section of the Institute.

If I can be of any assistance to you in your activities please do not hesitate to call on me.

Kindest regards.

Sincerely yours,
A. J. Miller
 Executive Secretary

See You at the Next Meeting?

sm/lo
 11-16

SLI:S
 cc - C.E. Ford



AICHE
 MIDLAND SECTION

Annual Report 1957-58

Directors and a President

The Mid-Michigan Section, since its formation in 1952, is proud of the service that Directors from the Section have provided to National AIChE.

Dr. W. R. Collings, Director 1959-61, was a prime mover leading to the formation of the Materials Division in 1968. His ability to act decisively was always an asset to the Section. Carl DeBord (in Recollections) comments on this. Dr. Collings received the Founders Award in 1967.

Ken Coulter, the third Midland Section Chairman and one of its founders, served as Director in 1971-73 and then became President of National in 1975. Ken received the Founders Award in 1977.

Pat (P. H.) McNamara worked hard in the local Section along with John Catenacci on development of professional guidelines. As a Director in 1977-79, the guidelines were implemented.

Programs

Strong programming covering a wide range of subject matter, both technical and non-technical, has been characteristic of the Section. Approximately 300 speakers have been presented in the 31 plus years of Section operation. Some of the more memorable ones are mentioned in "Recollections".

Professors' Workshops

One of the most difficult programs to sponsor - but one of the most rewarding - have been the Professors' Workshops. They require considerable corporate support and a lot of member time. Consequently, they have not been a yearly event. The workshops have proved to be very effective in bridging any gaps between engineers in academia and those in industry. Arrangements for another workshop are currently in motion.

Continuing Education

An active continuing education program has been a regular function of the Section and has been very successful, both from an educational and a financial viewpoint. "AIChE Today" courses, supplemented by some locally produced mini-courses, serve to combat the spectre of technical obsolescence. Response to a member questionnaire indicates a desire for two 2-day courses a year to be held on Fridays and Saturdays.

Graduate level Chemical Engineering courses until recently have been available as an extension service of the University of Michigan. Many of the membership do follow-up on an MBA program provided by Central Michigan University.

Registration as Professional Engineers in the State of Michigan is encouraged. "Registration-Certification-Licensing-Unionism" have been topics discussed in Section meetings.

American Institute of Chemical Engineers



MIDLAND SECTION
MIDLAND, MICHIGAN

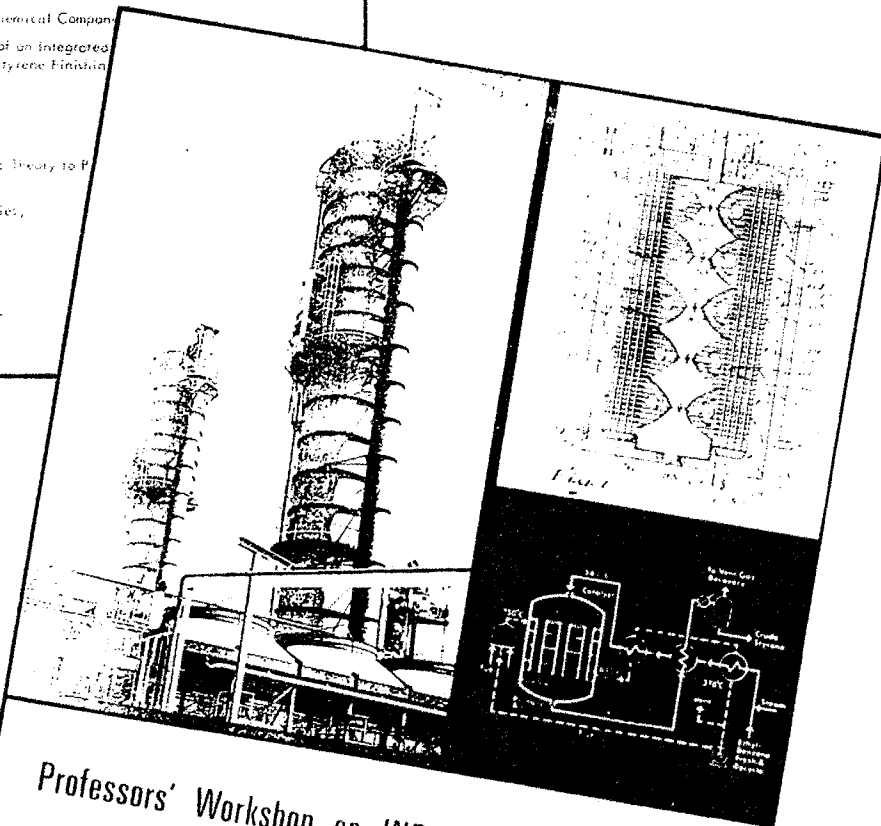
1968 PROFESSORS' WORKSHOP

"INDUSTRIAL MONOMER AND POLYMER ENGINEERING"

May 10 and 11, 1968
Midland, Michigan

TECHNICAL PROGRAM

May 10	<u>TECHNICAL SESSION I</u>	
	The Styrene Process - Introductory Remarks	K. E. Coyle
	Review of Styrene Technology	H. Kende
	Early Developments in Styrene Process Distillation Column Design	J. C. Franke
	Process Design of a Distillation Column for Styrene-Ethylbenzene Separation	G. R. Gaudin
Process Design of an Isothermal-type Ethylbenzene Dehydrogenation Reactor	R. M. Fair	
	<u>TECHNICAL SESSION II</u>	
	Tour of Styrene Plant, The Dow Chemical Company	
	A Hybrid Computer Optimization of an Integrated Ethylbenzene Dehydrogenation-Styrene Finishing	
May 11	<u>TECHNICAL SESSION III</u>	
	Elements of Polymer Engineering	
	Applications of Linear Viscoelastic Theory to Polymer Engineering Problems	
	Tour of Polymer Production Facilities, The Dow Chemical Company	



Professors' Workshop on INDUSTRIAL MONOMER
and POLYMER ENGINEERING

MAY 10-11, 1968
MIDLAND SECTION • AMERICAN INSTITUTE OF CHEMICAL ENGINEERS



Awards

The Section regularly presents Section awards for Chemical Engineer of the Year, Service to Society, and Junior Chemical Engineer of the Year.

In addition, the Awards Committee screens membership for possible submission to National for Fellow status and initiates the procedure when deserved.

Mini-Chem Show

The Section is continuing to sponsor a Mini-Chem Show on a biannual basis. The 1982 show featured 35 vendors and was well received by local technical people and the vendors.

Career Guidance

Career guidance has always been an objective of the Section. A peak was reached in 1957-58 when the career guidance message reached about 6500 young people. Science Fair awards are presented in the local area. Manning a booth at career guidance seminars held in the Midland-Bay City-Saginaw area is currently the method by which the High Schoolers are contacted.

Cooperation With Other Technical Organizations

The Mid-Michigan Section is a member of the Saginaw Valley Engineering Council (SVEC). The SVEC sponsors two dinner meeting programs a year and backs the refresher courses for the State Professional Engineers exam. The Section serves as host periodically for the SVEC meeting.

At least one meeting a year is cosponsored by the AIChE Section and one of the other area groups, such as the American Chemical Society and the local section of the Michigan Society of Professional Engineers.

Student Chapters

The Section has an ongoing yearly program with the Student Chapter at Michigan State University. The yearly get-together which features a one-on-one contact between a student and a practicing engineer, has been a highlight for both the Student Chapter and the local Section engineers.

The Section frequently has provided financial help to the Student Chapter to encourage officer attendance at National AIChE meetings and to winners of the student problem competition both from MSU and Michigan Technology Institute.

Plant Trips

Several AIChE plant trips to Midland and Dow and/or Dow Corning have been hosted; the most recent in 1981. The most memorable was the visit via rail from Detroit in the 1950's (Recollections - Carl DeBord).

Newsletter

- 12 -

Notices of all meetings are mailed to all members. Pertinent news is carried in these. In the mid-1970's a very attractive and communicative newsletter "The Graffiti" was published. The cost of the letter, plus an extraordinary dedication of time by the editors to keep it going, caused abandonment.

82-83 Chairman Bill Kern (on right)
Turning Reins Over to Don Beshgetoor
for 83-84

Dr. Wm. R. Collings
Director and Dow Corning
Entrepreneur

Long Time Member Calvin A. Campbell Congratulates 1983

Award Winners (L to R)

Karen Fox - Junior Chemical Engineer

Wm. Hargreaves - Service to Society

Bernard Meister - Chemical Engineer of the Year

Truman Bishop and Bill Harlow Greet AIChE Visitor
on the Dow and Dow Corning Plant Trip in 1956.





REFLECTIONS

American Institute of Chemical Engineers in the Mid-Michigan Section area has been an integral part and major contributor to many of the advances in chemistry and engineering over the 75 year history of the Institute.

In the early days there were chlorine, caustic, phenol, aspirin, bromine, magnesium from brine, methyl and ethyl cellulose, plus many others at Dow.

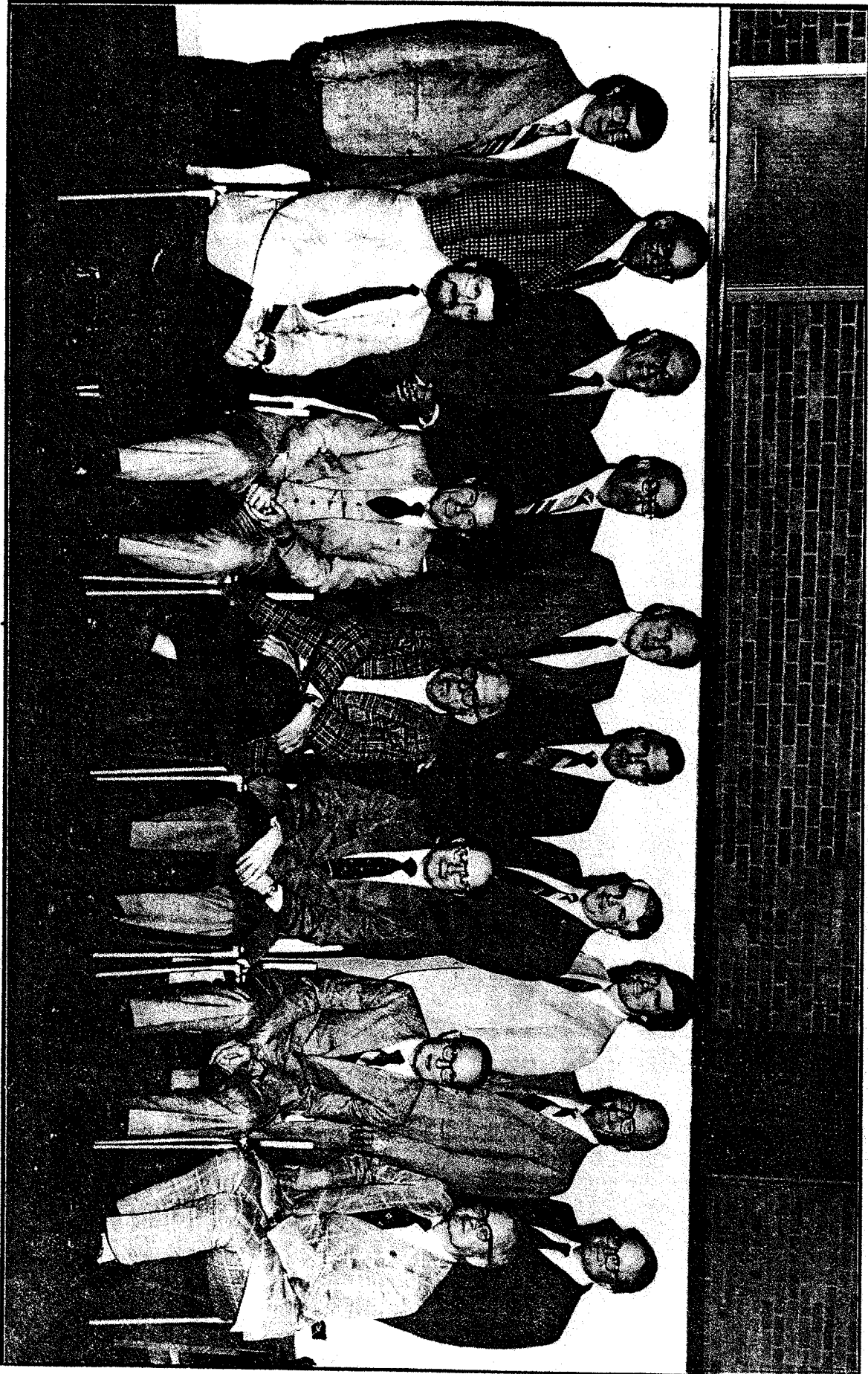
Dow Corning, under the early leadership of Dr. Collings, is celebrating in 1983 its 40 years of continuous pioneering and development of silicones.

Dow Chemical's contributions - styrene, saran, styrofoam, agricultural chemicals, and others too numerous to mention continue to mount.

Baker-Perkin keeps developing machinery to better process these polymers.

In addition to the technical development, many AIChE members have been instrumental in management of these operations in this science's many facets.

There is a large segment of local Section membership that often do not get public recognition. They are the ones who take the patent or patent idea that is just an infant and cause it to develop and grow into a responsible adult that fills a market need. Piloting, adaptation and developing process equipment, establishing methods and supervision, setting and meeting quality assurance specifications, minimizing wastes and safely and responsibly disposing of those remaining, are all operations that don't just happen. The Mid-Michigan Section has endeavored to promote the skills to do all these jobs well, responsibly and ethically.



Past, Present & Future Chairmen

Left to Right, Front Row: Vern Fauver, Bill Armstrong, Noland Poffenberger, Gus Constan, Jake Eichhorn, Dave Todd
Back Row: Don Beshgetoor, Jay Bleiweiss, Dave Camp, Chuck Alstad, Stan Englund, Bill Kern, Paul Stone,
Tom Brownlie (84-5), Truman Bishop, Bill Kuhlman

RECOLLECTIONS

To cover some of the highlights of 31 years of organization, past chairmen and officers have been asked to look back and comment on their term of service. These sometimes understandably overlap as service as chairman usually is the culmination of several years service to AIChE in varying capacities. And it is to this contribution of the time and talents of many that the AIChE, corporate and individual, owes much.

Section-In-Formation (1952)

Dr. Noland Poffenberger was the first chairman and continues to be a regular attendee at Section meetings. One can still count on "Poff" rising to make a comment or to ask a question. Much of the "Prologue" information was obtained from him. Technically, Poff was a leader in improving distillation and extraction processes. Development, along with 1956 Chairman Victor Morello, of the UDEX process for extracting aromatics from petroleum feedstocks - an innovation that resulted in the reduction of benzene costs from 50 to 25 cents a gallon - was one of his most profitable achievements.

A particularly interesting meeting in September 1952 was "Operation-Crossroads-Atomic Power" featuring the bikini atom bomb tests. Dr. John Grebe who witnessed the tests, served as the chairman of a very competent panel.

Ed Sprague - Membership Committee with Max Key in 1952-53, Recalls:

"After the Midland Section was founded, I was the first Dow Corning contact person, and I spent time trying to persuade the other Dow Corning chemical engineers that it was beneficial to become an AIChE member instead of or in addition to being an ACS member. After serving as Membership Chairman and on the Executive Committee in 1952-53, I had to leave the Midland Section because of my transfer to North Carolina.

"During this brief period, one of the major issues was whether a local Section member had to join the National organization. Because many engineers had joined ACS, they did not want the expense of belonging to two societies. We allowed the 'Local Member' category but always felt that ultimately everyone would have to join AIChE."

Ken Coulter Comments: (1952-54)

"Noland Poffenberger was the first Section Chairman, Jack Corey was second and I was the third local Section Chairman. Noland served his year but misfortune by way of a heart attack struck Jack, so I finished out his term because he could not attend. During my term, the program year was changed, so in reality I had about 2 years as local Section Chairman. (Editor's Note: As of 1983, Jack is the only past Chairman to have passed away.)

"During my term we involved Michigan Chemical and Leonard Refining and Duane Burdick became active. We also had a dinner meeting at Dow Corning attended by Dr. Putnam and the President of Michigan Chemical.

Sidney Kirkpatrick, the long time Editor of Chemical & Metallurgical Engineering, a past AIChE President and a personal friend of Dr. Putnam, was the speaker. The Section also heard from Dr. Ray Geddes of Stone & Webster on distillation, and Karl Finsterbush, a Vice President of Stone & Webster, who talked about putting a refinery package together from the idea, thru the financing, manning, constructing, etc. Our emphasis was divided into technology and business knowledge."

John Wardwell: (Secretary-Treasurer 1952-54, Chairman 1955-56)

"Much of our effort that year was devoted to membership and education. We needed more members to bolster our struggling treasury! Our membership increased by over 25% that year. I have no record of our treasury; probably a good thing!

"In the area of education, Section symposia were held on the following unit operations: Extraction, fluid flow, and distillation. Graduate level chemical engineering courses from the University of Michigan were offered in Midland, and a program on WNEM-TV was sponsored for secondary school science students.

"Our Section meetings were on subjects of current interest today: Energy resources, engineering and construction of the Aden Refinery, and high temperature chemistry.

"One of the major highlights of the year was a plant tour of the Dow and Dow Corning Midland operations for attendees of the National Meeting of the AIChE in Detroit in the Fall of 1955. About 200 persons came up from Detroit overnight on a special train, complete with Pullman cars! They were served a complimentary breakfast of mountain trout at the Dow Corning Cafeteria through the courtesy of Dr. Collings, then President of Dow Corning.

"Another highlight was our Annual Meeting in the Spring of 1956 at the Park Hotel in St. Louis, where we all enjoyed their famous duck dinner. Carl DeBord succeeded me as chairman at that meeting. We concluded the evening with a tour of the Marathon Refinery at Alma.

"Attendance at our meetings was surprisingly high, with as many as 61% of our members attending one of our meetings. For a young Section we were very alive at the National level. Section members were serving on no less than ten National AIChE committees. That's an impressive statistic!"

Carl DeBord Reflects on the Dow-Dow Corning Plant Trip: (1956-57)

"I believe three factors were important to the success of the local Section back when:

- (1) A high percentage of the membership was active in the local Section. For example, at the National President's visit to the local Section that year, over a dozen members ate dinner with the National President and participated in giving the him a

one-to-two line summary of what they were doing and interested in at the local level. Later on the President committed on this outstanding strength in the local Section.

Our Section was blessed with strong support from Dow and Dow Corning officials. For example, at one local Section meeting at which Thomas Griswold was given a special membership award, a good share of the mainstream Dow Board of Directors attended to honor Tom.

- (3) Any summary of the local Section back then must include the famous or perhaps infamous (?) local Dow and Dow Corning plant trip offered as a part of the Detroit National Meeting. Perhaps this rightly belongs to Wardwell's administration.

Dow was in a retrenchment period then and had to cut their financial support for the plant trip. Then Doc Collings (Dow Corning) got wind of the problem and requested the local Section officers to a meeting in his office to see what could be done to protect the honor and reputation of the local Section. Man, what a meeting! Doc Collings sure made a difference! An overnight Pullman train came up from Detroit and was parked on a Dow Corning siding close to the Dow Corning cafeteria. Dow Corning put on a breakfast at which, among other things, Danish brook trout was on the menu! I recall that the ladies' visiting committee had more committee members than lady visitors. With Doc Collings' inspiration and strong support, everybody but everybody pitched in and really made that plant trip something to be proud of and something to be remembered."

Jacob Eichhorn Recalls: (1957-58)

"AICHe Section officers, etc., were originally on a calendar year. We switched to the present June-June schedule when my term as Program Chairman in 1953 was to expire. I had 1½ years to do, which was a bit of a surprise.

"One of the highlights I participated in was the establishment of the University of Michigan graduate ChE extension program. I assisted in the first three courses. Ed Cowherd was the big pusher. (1953)

"The programs were better attended in mid-fifties. (Less to do in Midland in those days.)"

Truman Bishop Looks Back: (1958-59)

"Your request for highlights of my term as local Section Chairman really stretched my memory. I could hardly believe 25 years have passed since then. My term of office was 1958-59, and it is difficult to recall specifics. Two events stand out immediately.

- 1) The local Section sponsored Dr. W. R. Collings, President and General Manager of Dow Corning, for the position of

Director of the American Institute of Chemical Engineers. Everyone told us it took several tries to elect a proposed director, but with the solid support of all Section members and their contacts, we successfully elected Bill Collings on the first try - December 8, 1958 Annual Meeting. I was Campaign Manager, and it was very satisfying to have this recognition for our local Section.

- 2) The year 1958 was not the best from an economic standpoint for Midland. Severe cutbacks in employment taxed all professional employees. Probably the greatest effect was on college relations and the recruiting effort. Our local Section was extremely active in working through this situation.

"It has always been a pleasure and also a satisfying experience to work with the local Section. I look back on my early career, and the contacts made then through local Section activities still hold today.

Victor Morello Comments in the Annual Report: (1959-60)

"Many of our diverse activities show the interest of our members in career guidance and professional development... From the report we find a schedule of 7 fine programs arranged by Jim Scovic. One featured John Echert of U. S. Stoneware on 'Packed Columns'. In March W. Kenneth Davis of Bechtel spoke on 'Prospects for Nuclear Power'.

"Two courses of graduate level were presented in Midland by the University of Michigan with 33 members taking the classes.

"Career guidance again received heavy emphasis with over 1800 junior high and senior high students receiving information. Science fair projects were judged and slide rule awards presented by the Section."

Robert Greenhalgh: (1960-61)

Bob, currently Vice President and Technical Director of Conwed in St. Paul, Minnesota, was a long way from the old AIChE files, but recalls:

"The meetings and the annual dinner moved along quite routinely. As I recall, the main issue of the day at National was whether or not it was proper for engineers in industry to become registered. This subject was discussed in committee meetings and reviewed in long letters. The biggest meeting that I remember in Midland at about that time was one arranged by Wayne Barrett at the Methodist Church. The speaker was T. Keith Glennan, First Administrator NASA and former President of Case Institute. I don't know how many the Methodist Church holds, but we had it nearly full; it was a big crowd.

"We had some great fun at National meetings when Dr. Collings was on the board. I remember especially Lake Placid and London, but New Orleans and San Francisco were not bad either!"

Tom Tefft Reflects in His Preface to the Annual Report: (1961-62)

"It has been a genuine pleasure to have served as chairman of the Midland Section this year. It has been a good year thanks to the enthusiasm of all of you. Particularly, the Officers and Committee Chairmen have done outstanding jobs, giving us a year filled with worthwhile Section activities.

"This year the Midland Section joined with the Detroit Section to be jointly responsible for providing the State Board of Registration with a committee which will prepare and grade Part III of the State Registration Examination for Chemical Engineers. This is similar to the service rendered to the State of Michigan by the other Founder Societies for the other phases of engineering.

"The Midland Section participated for the first time in the Regional Symposium sponsored by several Midwest Local Sections. This year the symposium had as its topic, 'Economics in the Chemical Industry' and was held in Detroit on April 27.

"As a service project, the Midland Section sponsored an AEC demonstration unit on atomic energy at the Midland Fair.

"The Program Committee, under the guidance of Eldon Graham, did an excellent job of providing the Section with a stimulating program year under the theme 'World Responsibilities of the Chemical Engineer'."

Stan Englund Recalls a Section Crisis: (1962-63)

"One of the highlights of 1962 in AIChE, the year I was Chairman, involved a change in our bylaws. As I remember, the National AIChE made a rule that all members of a local AIChE Section had to belong to the National AIChE if they wished to use the AIChE name. Up to that time, it was not necessary that a member of a local Section be a National member. Many of the Midland AIChE local members were not members of National AIChE.

"I felt the future of the Midland Section was at stake, for if we voted not to accept the requirements of the National AIChE, we would lose all our ties with National and become a local engineering society which probably would not survive. It was necessary to have a vote on the proposal in our local Section. I asked Bill Armstrong to chair a committee to inform the membership, rewrite the local Section bylaws, and provide for a vote by the membership. Gus Constan assisted Bill. It was a big job and an important job. They had to convince the local members of AIChE to, in effect, spend more money to join National or to drop out of AIChE. Bill and Gus worked hard and when the vote was taken the membership accepted the new rule by a large majority. I feel the work of Bill Armstrong and Gus Constan saved our local Section from possible extinction and was very grateful for their good work.

"We had a good year in other respects too. We had a great Ladies Night program at the Bancroft Hotel in Saginaw with entertainment by

members of the Midland Music Society. We had an excellent Career Guidance program under Ed Steinhoff. I recall good programs under the leadership of Charles Wiles and membership interest was at a high level."

Jay Ashley: (1963-64)

(Editor's Note: Jay has been out of the area - Japan, Hong Kong, Washington, etc., over the past years.)

From Jay's annual report, his comments are:

"One of the many blessings our Section has enjoyed since its inception has been the high degree of interest, support, and participation of its membership. This year has been no exception, and your elected representatives were particularly gratified by your response to serve on committees and by your attendance at our regular meetings and our special events. This type of support gives us added incentive to excel the high standards which have already been set for the Section's activities.

"All of our committees did admirable jobs this year, and to single out one for special mention is done with risk. However, I believe we would all want to recognize the special importance of the work done by the Program Committee and the outstanding job done by Bill Armstrong. I would also call your attention to the work of a new committee - the International Relations Committee. This group, under the chairmanship of John Hodge, had no local precedent to guide it, yet had a vigorous program in its first year of operation."

Chuck Alstad Cites Programs: (1964-65)

"A full slate of monthly meetings starting with September and proceeding thru May included:

- Sept - 'Engineering Challenge of Lunar Exploration', Dr. Pete Glaser of A. D. Little
- Oct - Tour of Carling Brewery in Frankenmuth
- Nov - 'Creativity and the Engineer', Editor of Product Engineering Magazine
- Jan - Ladies Nite, 'From Sand to the Surgeon' by Silas Braley
- Feb - 'Nuclear Fusion', Dr. Robert Bingham of G. E. Research
- Mar - 'Hybrid Computers', Dr. Geo. Marr of Electronic Associates
- Apr - Symposium: 'The Impact of Int'l. Operations on the Chemical Industry'
- May - Annual Dinner Meeting, National President, Dr. W. B. Franklin (222 attendees)

"International Relations Committee under G. D. Kerns had an active year.

"The Section maintained contacts in Columbia, Brazil, and Mexico, and a chapter-to-chapter relationship with Rosario, Argentina."

Wm. S. Armstrong Notes a Great Program and Section Growth: (1965-66)

"The general theme for programs in 1965-66 was: "The Roles of the Chemical Engineer".

- Sept: 'The Chemical Engineer in Business', H. D. Doan, President of Dow Chemical
- Oct: 'Government Methods for Retrieval of Chemical Engineering Information', W. M. Carlson, AIChE Director and Director of Technical Information, Department of Defense
- Nov: 'Future Challenges for a Chemical Engineer', (joint meeting with MSU Student Chapter), Frank A. Landee, Dow Chemical Research Scientist
- Feb: 'The National Academy of Engineering', H. K. Work, Secretary, National Academy of Engineering
- Mar: 'Ocean Minerals and Ocean Engineering', G. S. Lockwood, Manager of Special Projects, Global Marine, Inc.
- Apr: 'Continuing Education - A Bucket of Worms', K. D. Timmerhaus, Associate Dean of Engineering, University of Colorado
- May: 'Development of Engineers and Managers', W. B. Franklin, past President of AIChE, Technical Manager at Baytown Refinery, Humble Oil & Refining Co.

"Two lecture series:

1. 'Practical Aspects of Instrumentation'
2. 'Understanding Thermodynamics'

"Books and journals were shipped to several Latin American universities.

"More than 100 new members were added to the roles of the Midland Section. Midland Section was first among all sections in the National AIChE of members residing locally who are active members in the (Midland) Section."

Wm. Brasie Reported on the 15th Year of the Section in 1967: (1966-67)

"In this past year (1966-67), the Midland Section celebrated its 15th year of existence by completing the transition from a 'Local' Section struggling with growth pains to a Section of mature stature with deep involvement, in Institute activities on a 'National' scale as well as locally.

"The past year saw new records established in the number of scheduled Section activities, attendance and participation in Section events and projects, and in Section membership, both in numbers and percentage of Institute members. These records reflect the cumulative effect of long years of hard effort by many Section members whose efforts must be recognized and shared with those participating this year. The

continued enthusiasm, support, and interest of Section members is the basis and strength for past and future growth.

"The major event of the year was the Section's involvement in the 59th Annual Meeting in Detroit in December 1966. The Technical Program Chairman for the meeting was Section member Robert Greenhalgh whose Committee, which included many other local members, did a superb job. Included in the Detroit Meeting was an overnight trip to Midland with plant tours of the Dow Chemical Company and Dow Corning Corporation. Seventy-five attended the tour, including F. J. VanAntwerpen who discovered how Midland chemical engineers brew world renown coffee. This tour was under the direction of J. William Miller and a Committee of over 50 people.

"Membership in the Section continued to grow under the guidance and efforts of C. E. Fahlgren and R. A. Copeland. Membership is now 440 with over 90 percent Institute membership - representing a 350 percent increase over the charter membership in 1952. An important contribution to Section growth was J. W. Miller, successively Section Membership Chairman, National Vice-Chairman, and now National Membership Chairman. The Section can look with pride on the performance of members such as Bob and Bill on the National scene.

"The Program Committee under Robert McMurtrie, brought a highly varied schedule of nine meetings, including a visit from the Institute President, T. A. Burtis. Our educational involvement included two evening seminars, an extensive survey and report on engineering education needs in the local area, and continuing dialogues with various educational institutions on future plans involving the engineering profession.

"Although the Section can look with pride on its accomplishments this year, like all organizations, it faces challenges in the future far greater than those met in the past. Foremost in these challenges are changing the organization to meet the growth and responsibility needs, increasing the Section's role in continuing education, and increasing the Section's contributions to society. An example of the latter challenge is developing at local levels, engineering councils on air and water resources.

"I am personally more than confident that the Section, with its heritage and past record, will meet these challenges. It has been a distinct privilege and pleasure to be able to serve the Section and work with many people dedicated to their chosen area of professional activity. My personal thanks go to all concerned."

Gus Constan Reports: (1967-68)

(Editor's Note: Gus is an AIChE Fellow and continues to be active in the Section activity. Constan was an active participant in the formation of the Materials Division - an effort proposed and strongly supported by Dr. W. R. Collings - and has served as Chairman of the Division.)

"The 1967-68 year followed hard on the heels of the highly successful Fifteenth Anniversary year and we faced the challenge with apprehension and determination. As in the past, the Section rose to the occasion.

"The diverse interests of our membership once again challenged the Program Committee which presented a varied program. The highlight was undoubtedly Professor R. Bird whose audience approached 300. Our Membership Committee maintained an aggressive and successful campaign. The Section addressed itself to the continuing education problem, looking at it on a long range basis and presenting a challenging course.

"Probably the most demanding activity undertaken was the Third Professors' Workshop, which by now is history. This is a major contribution to coping with the industry-academic gap. Our joint activities with MSU and President Max Peters' talk add to this area.

"As in the past, the Midland Section was highly active in affairs dealing with the Institute. Our International Relations Committee's recommendations have been adopted by the Institute, the Materials Engineering and Sciences Division is a reality with our people playing a major role, our Information System was presented as a model system, and many of our people are serving on Institute committees.

"The challenges of the future that the Section faces are real indeed. With the numerous outlets and demands for one's limited time that exist in Midland, it is a tribute to the Midland Section members that they have exhibited enough professional pride and concern to make the Section successful. Continuation of such enthusiasm will assure the continued health of the Section."

Bob Nankee: (1968-69)

Bob recalls some of the difficulty in getting speakers to Midland. (This happened in the 1950's.)

"George Marr of Electronics Associates of New Jersey was to be a speaker for us on computer utilization. His trip to Midland was in March and he left New Jersey in the morning on the day of our meeting. About 4:30 p.m. he called us from Toronto - explaining he had been in six or eight airports and, even though Tri-City was closed due to a snow storm, he would still do all he could to get to us for the meeting. Well, George finally arrived at 8:00 sharp - the meeting starting time - after driving up from Detroit through a snow storm. However, this was not his roughest trip to Midland, because on one of his previous trips he got to Detroit by commercial flight and rented a plane for a flight to Tri-City. While over Saginaw Bay, he lost an engine - litterly lost it - he saw it bounce on the ice below. Fortunately, it was a twin engine plane, so he limped into Tri-City. As it has been put - George Marr's trips to Midland in March involved little luck and most of that was bad."

Bob reported on Section activity in 1968-69:

"Special recognition is due Bob Copeland and his Program Committee for a successful schedule of eight meetings. The meetings were on challenging and varied subjects and had fine attendance. It has been a pleasure to have had members in St. Louis, Alma, and Saginaw areas join so fully in our programs and activities.

"Our effort to build stronger relations with chemical engineering students at Michigan State University has continued well this year. The joint meeting at Alma with the program on Environmental Pollution Control was particularly valuable in bringing students, educators, and industry members together on some common concerns.

"This year two special activity groups were appointed and their work will strengthen our section. One group, Long Range Planning, is issuing a report which will have far reaching effects on our overall programs and activities. The other group, made up of our Directors, gave us recommendations regarding National nominees, National awards, and a Midland Section award. The Midland Section award will be a new endeavor for us and hopefully the first local award will be made in 1970. Each Director also made valuable contributions as a liaison between the Executive Committee and several committees.

"A number of our local committees have been pace setters for other local AIChE section committees throughout the country. This year certainly proves the point with the 'new look' of our Career Guidance Committee activities and the present and future activities of the International Relations Committee. Our Public Relations Committee received honorable mention in the recent National Public Relations Committee contest.

"On the national scene, the Midland Section is called upon many times for information or aid. This year at the local Section Officers' meeting at National Headquarters, the Midland Section filled many requests for its recently completed manual of procedures and activities. Bill Brasie has accepted a call from AIChE Vice President Art Conn, to be a member-at-large of the Section Activities Committee and to work to improve Council liaison with the Midland, Detroit, and Toledo Sections.

"The Section sponsored a repeat performance of the Professors' Workshop. With the support of Dow and Dow Corning, the workshop was again a success with the fine efforts by many Section members of this major activity.

"Additional future challenges for the Section will include career guidance activities to minority groups, efforts to protect and improve our natural resources, and programs regarding materials engineering and science."

Ray Gaska Recalls the Year's "Firsts": (1969-70)

"From the pages of history, and one's memory, 1969-70 stands as a year of 'firsts'. The highlight of the year was the International Event - the first joint meeting between our Section and the Sarnia Section of

the Canadian Society for Chemical Engineering. This meeting took about one year of planning and attracted 126 chemical engineers, including over 40 from Canada.

"Another 'first' was the start of the practice of selecting 'The Chemical Engineer of the Year', which has become a tradition in our Section. The selection was to 'recognize professional, as well as AIChE accomplishments'. (If my memory serves me right, Ken Coulter was the first recipient.)

"The annual report tells us that during that year we had a very active Professional Development Committee, which organized and conducted the now famous case studies featuring the solution of practical engineering problems. A total of 64 Section members attended the program. Equally remarkable was the accomplishment of the Career Guidance Committee which worked with 12 Saginaw Valley High Schools - their counselors, science teachers and students - in explaining the role the chemical engineer plays in society. The report notes that the reception had been 'excellent'.

"The membership that year swelled to 423, with 41 new members joining. The best attended meeting was the September gathering where Levi Leathers attracted a crowd of over 200 with his rendition of 'The Know-How Gap'.

"And, finally, 1969-70 marked the beginning of the successful Ken Coulter campaign for National AIChE Directorship, when many local chapter members had a lot of fun helping Ken campaign and then 'celebrating' his election."

Bob (R. A.) Copeland: (1970-71)

Bob remembers the Nuclear Power Plant survey as part of an active year's program:

"In the year 1970-71, the Midland Section (as it was known at that time), dealt with a wide range of issues from nuclear power to environmental concerns to social issues to training and guidance of chemical engineers. The Section was also very proud to have one of its members and a former chairman, Ken Coulter, elected as a National Director. Members of the Section under the leadership of R. A. Gaska and Howard Kehde were very active in assisting Ken in his campaign.

"In September Dr. Earle Barnes, General Manager of the U. S. Area, the Dow Chemical Company, spoke on the topic 'The Impact of National Concern About Environment on Industrial Growth'. Dr. Barnes challenged chemical engineers to build clean, non-polluting plants. 'Engineers should not wait to have the managers of industry tell them that they must build clean plants; they should have and exhibit their own social consciousness in their jobs to implement better design and better operations.' Other program topics during the course of the year were heat exchanger design, design and development of centrifuges, and process scale-up from bench scale experiments. Joint meetings were held with the Michigan State University Student Chapter

and with the Sarnia Section of the Chemical Society for Chemical Engineering.

"In their second year of activity, the Career Guidance Committee increased the liaison of our chemical engineers with high schools to 19 high schools. Eighteen teachers joined with members of the local Section to hear a talk by Dr. Ford of Eastman Kodak on 'The Inside Story of Color Photography'.

"The guest speaker for the February 1971 Ladies Night Program was Mrs. Jane Hart, wife of Michigan's Senior Senator, Philip A. Hart. Her speech was warmly received, as she highlighted the responsibilities of those capable of effecting progress to do so in the social, economic and psychological fields, as well as in technical fields.

"In 1970 the new Consumers Corporation Nuclear Power Plant was under-way with a projected completion of 1975. A committee was formed, with Dave Buzzelli as Chairman, to determine the posture of the local Section members toward the proposed nuclear power plant. The opinions of the Section members were determined by secret ballot mailed in November. Overwhelming support of the proposed facility was indicated by the results of this survey with 98.8% of the responses in favor of the proposed facility. A total of 78% of the Section members returned their ballots. The results of this survey and a resolution from the Midland Section in support of the nuclear facility were presented to the Safety and Licensing Board of the Atomic Energy Commission at the December 1, 1970 hearing in Midland.

"The Professional Development Committee conducted two seminars which were very well received. The first seminar on 'Applied Process Control' was 16 hours in duration, and was presented three times to meet the requests of Section members. A seminar on 'Communications and Career Planning' was presented twice. Eighty-five enrolled for the Process Control seminar, and 35 enrolled for the Communications and Career Planning seminar.

"The Section reserved some time for play. The Third Annual Golf Outing was held in September, and bowling was included as part of the evening's activities, followed by a dinner.

"The addition of forty-eight new members brought the Section to a total of 424 members by the end of the year. 401 of these members are also National members. The total number of chemical engineers in the Midland area was estimated to be 750.

"Thus, the AIChE year, 1970-71, was a very active one in Midland, with good attendance of the programs and with strong participation in the committee activities."

Jim (J. E.) Huff Recollects Some Labor Pains: (1971-72)

(Editor's Note: Jim received the Chemical Engineer of the Year Award in 1978 and was elected a Fellow of the AIChE in 1979.)

"This was a year marked by the presence of prolific people in key Section functions. The Chairman was perhaps too prolific, since he became torn between the call of duty to Section business and response to false labor pains at home (eventually had both a successful program and a new son!). But this was a trifle compared with the output of the past treasurer - triplets!! (Editor's Note: John Oleson)

"By 1971, the Section had established a smooth and self-sustaining organizational structure and was ready to expand into new areas. These were:

1. Employment coordination function to bring National's program to the Section members (Doug Aldrich).
2. Long range planning effort aimed at assessing and meeting our goals of service to the membership and society (John Catenacci).
3. Establishment of an Environmental Activities Committee (Lee Crampton).

"The first project of the Environmental Activities Committee was to prepare to host the following year's AIChE Environmental Division's Pollution Workshop. The Committee's most noted accomplishment was to provide fertile ground for Stacy Daniels to work in. Stacy has achieved distinction at the National level for his work in the environmental area.

"A lasting result of the long range planning effort was a set of overdue revisions to the bylaws regarding membership grades and dues structure. All-in-all, the year was successful and a good time was had by most everyone!"

Ed Steinhoff Summarized His Year as Chairman: (1972-73)

"Much of the activities reflect continued progress in areas of proven Section expertise. A varied selection of entertaining and thought-provoking meeting programs, supported by smooth arrangements and appropriate publicity are typical examples. Another addition to an outstanding series of professional development courses also warrants special recognition.

"In addition to progress in such traditional areas, however, this year saw an increasing rate of evolutionary change. An Advance Projects Committee was established and charged with identifying and initiating new directions for the Section. In choosing to focus on the new issue of employee/employer guidelines, this Committee demonstrated to many member and non-member chemical engineers that AIChE is indeed relevant. In December, a set of basic bylaw changes was ratified permitting a dues increase essential to Section financial health, giving the Section a new and more representative name, (Editor's Note: To the Mid-Michigan Section.) and generally modernizing bylaw language. I am confident that accomplishments such as these will benefit the Section in years to come.

"In addition to highlighting the above examples of progress, I believe it is constructive to identify areas of disappointment. Despite a fine selection of programs, meeting attendance this year continued its recent decline. In addition, the mid-year loss of Committee Chairmen for Career Guidance, Environmental Projects and Arrangements caused an interruption in continuity and left a need to rebuild. These items remain as challenges for the Section's incoming Officers.

"In the past, the strength of the Mid-Michigan Section has been the willingness of a large number of members to devote their time and talent to Section activities. This year has been no exception. I would like to personally and sincerely thank all Officers, Committee Chairmen, and Committee Members for their many contributions to a successful activity year."

Mike (M. P.) Moyer: (1973-74)

Mike was chairman during the 6-month Dow strike and recalls:

"The most memorable event was the 6 month strike which required most Dow AIChE members to working 12-hours-a-day production jobs. One meeting was cancelled and office terms were extended. The annual meeting was held in November instead of May. We did have good meetings in spite of the interruption."

Mike's summary for the annual report reflects on the year's activity:

"We began our 22nd year with the following emphasis:

1. Make sure we actually do things that are of value to our members, to society, and to our profession.
2. Make sure we tell people what we are doing.

"Before a strike at a major local employer brought our AIChE activities to a temporary halt, nearly all of our committees were aggressively pursuing the stated goals of AIChE and making great progress. The Environmental Projects group was applying their talents to the leadership of a community-wide paper recycling project. Our Employer-Employee Relations group gained nationwide notoriety after publishing an article in CEP about their work to obtain the first public endorsement of the guidelines by a major employer of chemical engineers. The Industry-University Relations group carried the traditional programs with Michigan Tech and MSU students in addition to defining and working on three exciting and rewarding new projects with colleges and universities. Our regular monthly meetings reversed a past trend of decreasing attendance with excellent speakers on topics of broad and general interest. Our newsletter underwent major overhaul, and the resulting Graffiti is now looked forward to and is downright enjoyable reading. With advertisements, it has a good start at paying for itself, too.

"Each of our committees consisted of people with a special individual interest in that particular area, and that interest included a strong

desire to do something to work toward the committee's goals. Their participation was stimulating, challenging, educational and rewarding. To those of you who 'made it happen', my warmest thanks and congratulations. To those of you who haven't yet shared the enthusiasm, creativity, and satisfaction of accomplishment in these committees, my invitation to try it."

Dave Todd: (1974-76)

(Editor's Note: Dave is Technical Director, Plastics Equipment Division, Baker Perkins Inc., located in Saginaw, Michigan. Dave was elected an AIChE Fellow in 1978.)

Dave recollects:

"I remember an extended term of office (November 12, 1974 to May 19, 1976) due to the Dow strike. It took a while to get the AIChE program running smoothly but an interesting program year resulted.

"Initiation of the 'one student on one engineer' program with the Michigan State University Chapter started a successful career guidance method that has been continued.

"A number of memorable programs were held. Carl Gerstacker opened one season talking on Economic Analysis. The Lt. Governor's wife talked about alcoholism. Mac Pruitt addressed the Section on the National Energy Policy. Ted Walker of Dow spoke on the 'Expatriot Engineer' and Mary Sinclair of Midland was given a chance to express her anti-nuclear sentiments.

"A continuing education course on Fire and Explosion Hazards was a success."

Paul (P. D.) Stone Reports: (1976-77)

"We were trying for a truly balanced program year with something for everyone, and I think we achieved that. Attendance was excellent. My 'Hi-Lite' meeting was our 25th Silver Anniversary night with seven past chairmen speaking. It was a good year and exciting too! I have summarized the activity:

"This was an important year for the Mid-Michigan Section:

1. 1977 was the 25th Anniversary for the Mid-Michigan Section.
2. 10 activities meetings were held with a total of approximately 1,665 people attending.
3. The first Mini-Chem Show was held.
4. Another successful Professional Development Seminar was held.

"September 15, 1976

Joint AIChE-ACS Meeting. Dow 47 Building. 'A Portrait of 40 Years in Polymers', by Dr. William G. Goggin, Dow Corning.

"September 28, 1976

Special Technical Meeting. Macromolecular Institute, Midland. 'Process Development - The Case History of a Solvent Extraction Process', by Dr. (Ms.) Ruth Blumberg, Deputy Research Head, Israeli Mining, Haifa, Israel.

"October 14, 1976

Membership Night - free beer - American Legion Hall, Midland. 'The Strange World of Cryogenics' and 'AIChE and Its Goals', by Klaus D. Timmerhaus, President of National AIChE.

"November 17, 1976

Non-Technical Night. Dow 47 Building. 'Body Language: How to Read a Person Like a Book - Maybe', by Dr. Corwin P. P. King, University of Wisconsin.

"January 20, 1977

Joint MSU Student Chapter/AIChE Meeting. One-half day tour for 85 students with individual sponsors. Lunch and dinner meeting. Great Hall - Midland. 'New Developments in Solar Heating', by Dr. T. Johnson, MIT Department of Architecture.

"February 17, 1977

Technical Meeting. Dow 47 Building. 'Boiling Heat Transfer, or Don't Forget the Reboiler', by Dr. James Fair, Engineering Director, Monsanto.

"February 18, 1977

Professional Development Seminar. Northwood Institute, Midland. Special two-day 'AIChE Today Series' Technical Seminar. 'Distillation in Practice', by Dr. James Fair, and William Bolles.

"March 4, 1977

Couples Night. Midland Center for the Arts. Champagne cocktail party and catered banquet dinner plus musical 'Showboat'.

"April 25, 1977

Mini-Chem Show. Great Hall, Midland. 25 vendors with technical displays and hardware. Free refreshments for attendees.

"May 25, 1977

Annual Meeting - 25th Anniversary. Schweizer's North, Midland 'Nostalgia Night' by 'Seven Past Chairmen'."

Neil Drake: (1977-78)

Neil headed an excellent program year.

Hunter Henry, then General Manager of Dow Michigan Division, opened the season with a talk entitled "Steering Like Hell".

A program on environmental considerations that featured Dr. Howard Tanner, Director of the Michigan Department of Natural Resources, was very well attended and provoked much discussion.

A spouses nite with dinner followed by attendance at a production of "My Fair Lady" provided an evening of technical diversion.

"On-Line Process Measurements" was an AIChE Today course presented locally and was well attended.

A successful Mini-Chem Show was held in April 1978.

Capping a fine year was AIChE President Dr. William Corcoran of the California Institute of Technology speaking on "Changes and Challenges in Chemical Engineering".

Jay Bleiweiss: (1978-79)

Jay recalls an active program and especially a program featuring Margaret Maxey, Associate Professor of Bioethics, University of Detroit, who spoke on "Nuclear Electricity - Bioethical Problems, Priorities and Imperatives".

Jim Huff was named an AIChE Fellow during the year.

Vern Fauver Submits Portions of the 1979-80 Annual Report: (1979-80)

"October 1979

William J. Hargreaves, Executive Vice President, Dow Corning Corporation, spoke on 'Today's Problems - Tomorrow's Opportunities' (Unconventional Wisdom - the Key to Managing the Future).

"November 1979

'Managing Your Career' presented by the Professional Development Committee as an introduction to the subject. Speakers were Dr. Jerry E. Toomer, Manager of Psychology and Training Resources, Michigan Division, Dow Chemical USA, on 'Motivation, Performance and Career/Life Planning', and Clayton L. Davidson, Special Projects Manager, Facilities Engineering, Dow Corning Corporation, on 'Professional Career Development'.

"December 1979

Joint meeting with Saginaw Valley Chapter, Michigan Society of Professional Engineers: 'Design and Fuel Selection Alternatives for a Steam and Electric Cogeneration Facility' by B. A. Bartos, Project Manager, Dow Corning Corporation, J. DeBoe, Campbell-DeBoe Associates and P. Sworden, Forester, Dow Corning Corporation.

"January 1980

Joint meeting with Michigan State University Student Chapter (at East Lansing); Dr. Gerald Park, Department of Electrical Engineering and Systems Science, MSU, asked 'Is There Economic Energy Blowin' in the Wind?' (The technical and economic feasibility of wind generators.)

"February 1980

Engineers Week, joint meeting with Saginaw Valley Engineering Council (in Flint). Dr. Herman Koenig, Director of the Center for Environmental Quality, MSU; 'Engineers, the Renewable Resource'.

"May 1980

Annual Meeting: Election and awards. Dr. James G. Knudsen, President of AIChE and Associate Dean of Engineering, Oregon State University, 'Technology - Its Risks, Benefits and Irreversibility(?)'.

"Mid-Michigan Section people continue to be active in National AIChE work in 1980:

- Anderson, D. K. Education Projects Committee
- Brasie, Bill Safety and Health Division, Secretary/Treasurer
- Buck, S. Student Chapters Committee
- Bugg, Don A. Student Chapters Committee
- Camp, D. T. Education & Accreditation Committee
- Constan, Gus L. Materials Engineering & Science Division
Program Committee: Material Engineering &
Science Chairman
- Coulter, Ken E. Energy Coordinating Committee;
Ethics Committee
- Englund, Stan W. Program Committee
Admissions Committee
- Huff, James D. Design Institute for Emergency Relief Systems
Chairman, Technical Advisory Committee for
Two-Phase Flow Research
- Kalmbach, D. Student Chapters Committee
- Kehde, Howard Career Guidance Committee
Publications Committee
- Kuhlman, Bill D. Professional Legislation Committee
- Maasberg, Al T. Chemical Engineering Education Projects Committee
- May, Vern T. Program Committee: Pilot Plants
- McNamara, Pat H. Awards Committee
Energy Coordinating Committee
Professional Development Committee
Professional Legislation Committee
- Meister, Bernie J. Program Committee: Polymer Engineering
- Nankee, Robert J. Public Relations Committee
- Romanowski, R. Student Chapters Committee
- Stone, Paul Public Relations Committee
- Vogel, Alex J. Program Committee: Pilot Plants

"The Mid-Michigan Chemical Engineer of the Year Award went to Frank Aerstin and Gary Street in recognition of their contributions to process design, including the authorship of 'Applied Chemical Process Design'. Frank and Gary were recognized at the Annual Dinner Meeting of the Mid-Michigan Section and each received an inscribed plaque."

This report also carried a tribute to Dr. Wm. R. Collings:

"The Section notes with deep regret the death of William R. Collings on February 4, 1980.

"He joined Dow Corning when it was formed in 1943, serving as its first General Manager and as President from 1954-62. He was a strong proponent of AIChE at both the local and national levels. In 1952, he became a founding member of the Mid-Michigan Section, having served on its organizing committee. The Section recognized him as an Honorary Member in 1963. He was a National AIChE Director from 1959-61 and was also instrumental in starting the Material Sciences Division within AIChE."

Dave Camp Comments: (1980-81)

"Paul Orifice, President of the Dow Chemical Company, spoke on 'Being a Successful Engineer' to start an active programming season. In October, a Mini-Chem Show under Vern Fauver's chairmanship was a success. Dave Gushee from the Library of Congress was the November speaker. Dr. Tony Ponter of Michigan Tech spoke to the Section on 'Column Packing Wetting' in January.

"The Michigan State Student Chapter was hosted in January and toured the Midland Nuclear Plant. At a dinner meeting following the tour, Truman Bishop of Dow Corning spoke on 'Career Paths in Engineering'.

"In February, we were privileged to hear Mark Rosenweig report on the results of the survey on 'Ethics in Engineering' that Chemical Engineering magazine had completed. A dinner meeting in March and a dinner theater 'Spouses' nite in May helped complete the program schedule.

"Continuing education received heavy emphasis. A questionnaire on this ongoing program was circulated. Response indicated a strong desire for more effort in this area. As a result, 'AIChE Today' courses in 'Project Management' and 'Distillation in Practice' and a locally produced mini-course on 'Computer Tools' were presented and were well attended."

Bill (Wm. D.) Kuhlman Reflects: (1981-82)

"Encouraged by the response to the professional development questionnaire circulated during Camp's chairmanship, two 'AIChE Today' courses were scheduled. However, tough economic times caused postponement. In spite of this disappointment, an active 11-meeting program schedule was presented. A locally produced Mini-Tech Meeting on 'Computer Simulation Tools' was a substitute for the postponed continuing education courses. The Dow Corning SECO (steam-electric cogeneration) Plant was the subject of a Section-sponsored visit by the Michigan State University Student Chapter and was included in the Midland Dow and Dow Corning plant trip which the Section hosted following the 1981 summer Detroit AIChE meeting.

"In addition, the Section heard talks by the University of Michigan Engineering Dean Duderstadt, toured the Midland Nuclear Plant, listened to Dow Corning Vice President Maneri, and capped the year with a dinner meeting with AIChE President Dick Hughes.

"The two-day Mini-Chem Show held in June of 1981 under Vern Fauver's guidance was well received by vendors and members.

"An award for 'Junior Chemical Engineer of the Year' was presented to Stu Goldfarb. The 'Service to Society Award' was presented to Earl Ebach.

"My term as Chairman set a precedent in that after 6 years with Dow and 37 years with Dow Corning, I became the first retiree to serve as a Section Chairman."

Bill Kern Comments on His Year as Chairman: (1982-83)

"I feel we had a good variety of programs for our monthly meetings - something for everyone - from chemical engineering at Dow with Bob Caldwell to the private practice of chemical engineering, from plant tours to a dinner theater night, from centrifugal pumps to nuclear power plants, and from a joint meeting with the students from MSU to hearing from the Professor, Lyle Albright. The members really enjoyed having some meetings at the YBPG Building and the free 'beer and pretzel' social hour preceding a number of our meetings.

"I enjoyed the opportunity to talk about AIChE to new technical professionals hired at Dow Corning the past two years. I am happy to say that 62 new members joined our Section and our membership now stands at about 480 people.

"1983 marks the 75th birthday of AIChE - our Diamond Anniversary. National has asked all local sections to hold celebrations to commemorate this milestone. Don Beshgetoor is working on a gala celebration program to be held this Fall. In conjunction with this, Bill Kuhlman is working on writing a 'History of Our Section'.

"The Section presented three well deserved awards. 'Chemical Engineer of the Year' was awarded to Bernard Meister. The 'Service to Society Award' was presented to Wm. J. Hargreaves, and the 'Junior Chemical Engineer of the Year' went to Karen Fox.

"Throughout this Diamond Anniversary year, I hope all members will take every opportunity to convey to the public at large the contribution chemical engineering and chemical engineers have made and are making to society."

AICHE MIDLAND SECTION OFFICERS

	1952	1953-54	1954-55	1955-56
<u>Job</u>				
<u>Elected</u>				
Chairman	N. Poffenberger	J. W. Corey	K. E. Coulter	J. H. Wardwell
Vice-Chairman	J. W. Corey	K. E. Coulter	J. H. Wardwell	C. D. DeBord
Secretary-Treasurer	Kapnichy-Wardwell	J. H. Wardwell	C. D. DeBord	J. Eichhorn
Treasurer				T. B. Bishop
Exec. Com.	K. E. Coulter	E. G. Sprague	J. Eichhorn	E. R. Cowherd
	R. F. Prescott	R. E. Withrow	D. F. Burdick	D. F. Burdick
				A. J. Abbott
<u>Appointed</u>				
Publicity	R. Duddleston	T. B. Bishop	G. E. Koch	J. Bishop
Career Guidance		C. D. DeBord	E. R. Cowherd	J. Spriggs
Education		J. Eichhorn	J. Eichhorn	J. Ashley
Membership	M. Key	E. G. Sprague	R. H. Gray	G. Constan
Program	F. A. Landee	J. Eichhorn	V. S. Morello	R. McIntire
Replacement Ex. Com.			T. B. Bishop	
Nominations	S. B. Heath	E. D. Morris	F. E. Ford	J. W. Corey
Arrangements				C. Falhgren

AICHE MIDLAND SECTION OFFICERS

	1956-57	1957-58	1958-59	1959-60
<u>Job</u>				
<u>Elected</u>				
Chairman	C. D. DeBord	J. Eichhorn	T. B. Bishop	V. S. Morello
Vice-Chairman	J. Eichhorn	T. B. Bishop	V. S. Morello	R. E. Greenhalgh
Secretary	T. B. Bishop	J. H. Ashley	R. E. Greenhalgh	T. H. Tefft
Treasurer	D. F. Burdick	V. S. Morello	R. Duddleston	S. M. Englund
Exec. Com.	J. H. Ashley	J. L. McCurdy	T. H. Tefft	R. R. Wolf
	R. Greenhalgh	G. L. Constan	K. E. Coulter	W. C. Timm
			W. S. Armstrong	W. D. Kuhlman
<u>Appointed</u>				
Publicity	W. S. Armstrong	L. Thomka	R. Johnson	B. Wilkinson
Career Guidance	J. D. Griffin	W. D. Kuhlman	S. Englund	D. Ballast
Education	J. H. Ashley	R. D. Briggs	C. Alstad	C. Alstad
Membership	H. W. Smeal	R. Bircher	L. Saphier	V. Kalcevic
Program	Harlow-Tefft	T. Tefft	H. Graves	J. Scovic
TV Program	Walton-Spriggs	J. S. Spriggs		
Student Contest/Sci. Fair		P. G. Murdoch	D. Burdick	J. Hodge
Ladies Night				P. Reisner
Nominations	K. E. Coulter	J. Wardwell	J. Eichhorn	T. Bishop
Arrangements	Fahlgren-Wright	P. W. Wright	W. Brasie	R. Carlson
Intersociety Dinner			V. Morello	W. Brasie

AICHE MIDLAND SECTION OFFICERS

	1960-61	1961-62	1962-63	1963-64
<u>Job</u>				
<u>Elected</u>				
Chairman	R. E. Greenhalgh	T. H. Tefft	S. M. Englund	J. H. Ashley
Vice-Chairman	T. H. Tefft	S. M. Englund	J. H. Ashley	C. D. Alstad
Secretary	S. M. Englund	W. S. Armstrong	C. D. Alstad	W. C. Brasie
Treasurer	W. S. Armstrong	C. D. Alstad	W. C. Brasie	B. W. Wilkinson
Exec. Com.	R. L. Johnson	P. G. Murdoch	R. D. Briggs	C. R. Wiles
	C. D. Alstad	V. Kalcovic	B. W. Wilkinson	S. W. Dylewski
	W. C. Brasie	G. L. Constan	W. E. Barrett	J. W. Miller
<u>Appointed</u>				
Publicity	E. O. Gooding	D. F. Burdick	R. J. Nankee	R. J. Nankee
Career Guidance	L. L. Mastic	R. J. Nankee	E. Steinhoff	E. Steinhoff
Education	R. D. Briggs	B. W. Wilkinson	D. Leng	R. McMurtrie
Membership	V. Kalcevic	W. C. Brasie	J. W. Miller	E. O. Gooding
Program	W. E. Barrett	E. L. Graham	C. R. Wiles	N. S. Armstrong
Science Fair Award	C. Wiles	R. C. Gunderson		
Intersociety Dinner	R. G. Carlsen	R. G. Carlsen		
Ladies Night	Hook	T. Christianson	T. Christianson	D. L. Beshgetoor
Nominations	V. Morello	R. E. Greenhalgh	T. H. Tefft	T. H. Tefft
Arrangements	D. L. Beshgetoor	E. O. Gooding	S. W. Dylewski	L. L. Saphier
Intl. Relations				J. Hodge

AICHE MIDLAND SECTION OFFICERS

	1964-65	1965-66	1966-67	1967-68
<u>Elected</u>				
Chairman	C. D. Alstad	W. S. Armstrong	W. C. Brasie	G. L. Constan
Vice-Chairman	W. S. Armstrong	W. C. Brasie	G. L. Constan	R. J. Nankee
Secretary	J. A. Hodge	G. L. Constan	R. J. Nankee	R. A. Copeland
Treasurer	G. L. Constan	R. J. Nankee	R. A. Gaska	E. Steinhoff
Exec. Com.	J. M. Scovic	H. D. Fashbaugh	H. D. Fashbaugh	C. E. Fahlgren
	R. J. Nankee	R. McMurtrie	R. A. Copeland	J. E. Huff
	E. Steinhoff	R. A. Gaska	D. K. Anderson	J. D. Oleson
<u>Appointed</u>				
Public Relations	R. A. Gaska	E. Steinhoff	J. D. Oleson	E. V. Becker
Career Guidance	D. E. Collins	J. W. Paige	K. E. Bazaire	W. P. Cavanaugh
Education-Prof. Dev.	R. M. McMurtrie	R. L. Johnson	R. L. Casteel	F. C. Swinehart
Membership	R. A. Copeland	R. A. Copeland	C. E. Fahlgren	R. A. Gaska
Program	W. C. Brasie	J. A. Hodge	R. McMurtrie	H. D. Fashbaugh
Ladies Night & Tickets	J. W. Miller	A. M. Benton	B. D. Trayer	H. G. Ahlich
Intl. Relations	G. D. Kerns	E. J. Macaya	W. R. Ferris	J. A. Gray
Film Evaluation	J. E. Huff	J. E. Huff		
Nominations	T. H. Tefft	C. A. Alstad	W. S. Armstrong	
Arrangements	V. A. Fauver	R. C. Gunderson	J. E. Huff	B. O. Trayer
Special Activity			J. W. Miller	
Profs. Workshop				J. D. Griffin
Newsletter		J. D. Oleson	T. A. Triebes	M. P. Moyer
Information System		M. P. Moyer	M. P. Moyer	L. L. Krohn

AICHE MIDLAND SECTION OFFICERS

	1968-69	1969-70	1970-71	1971-72
<u>Job</u>				
<u>Elected</u>				
Chairman	R. J. Nankee	R. A. Gaska	R. A. Copeland	J. E. Huff
Vice-Chairman	R. A. Gaska	R. A. Copeland	J. E. Huff	E. Steinhoff
Secretary	E. Steinhoff	J. E. Huff	F. M. Swinehart	M. P. Moyer
Treasurer	J. E. Huff	M. P. Moyer	J. D. Oleson	D. T. Buzzelli
Exec. Com.	R. L. Johnson	A. A. Gunkler	D. T. Buzzelli	D. Todd
	J. D. Oleson	F. M. Swinehart	A. A. Gunkler	M. E. McDonald
	J. A. Hodge	J. A. Gray	T. A. Triebebs	D. Aldrich
<u>Appointed</u>				
Ind. Case Study			R. C. Smart	R. C. Smart
Career Guidance	H. D. Fashbaugh		D. Aldrich	J. Hipple
Ladies Night		E. Steinhoff	D. B. Todd	
Membership Program	D. T. Buzzelli	M. E. McDonald	M. Moyer	R. A. Hazleton
Inf. Systems	R. A. Copeland	J. D. Griffin	L. B. Crampton	F. M. Swinehart
Intl. Relations	L. L. Krohn	D. T. Buzzelli		G. Street
Professional Dev.	T. A. Triebebs			
Ad Hoc Long Range Plan.	M. J. Gross	M. J. Gross	G. L. Street	G. Hoyer
Arrangements	M. P. Moyer	P. D. Stone	M. E. McDonald	J. Catenacci
Profs. Workshop	W. C. Brasie			N. Drake
Public Relations	E. V. Becker	A. J. Vogel	V. T. May	P. D. Stone
Newsletter	R. A. Hazleton		P. D. Stone	
Environmental Project				L. Crampton

ALCOLE FIELD-FLORISSANT SECTION OFFICERS

1976-77

1974-1975-76

1973-74

1972-73

Job

Elected

Chairman	E. Steinhoff	M. P. Moyer	D. Todd	P. D. Stone
Vice-Chairman	M. P. Moyer	D. Todd	P. D. Stone	N. Drake
Secretary	M. E. McDonald	P. D. Stone	N. Drake	J. Bleiweiss
Treasurer	P. D. Stone	W. P. Cavanaugh	J. Bleiweiss	R. Johnson
Director	J. R. Catenacci	N. Drake	J. Catenacci	E. Nussbaum
Director	W. P. Cavanaugh	J. C. Bleiweiss	W. Kuhlman	O. Heng
Director	G. L. Street	W. Kuhlman	P. Bork	H. Kehde

Appointed

Arrangements	Hilbert-Jones	J. Jones	S. M. Rodgers	J. Ryan
Awards	W. Armstrong	R. A. Gaska	W. C. Brasie	D. Todd
Career Guidance	J. Hipple	S. Kasley	D. Hazleton	
Com. Relations		D. T. Buzzelli		
Employee Relations		P. McNamara		
Environ. Proj.	Vogel-Daniels	S. Daniels	S. Daniels	
Info. Systems	N. Drake	C. Stofer	C. Stofer	C. Wasserman
Membership	D. Miller	D. Miller	C. Schneider	E. Nussbaum
Newsletter Ed.		J. Catenacci		
Newsletter	N. Drake	P. Vona	P. Vona	S. Rodgers
Professional Dev.	O. Heng	J. Humphrey	C. Stofer	P. Bork
Program	D. Aldrich	Kline-Johnson	V. Fauver	N. Drake
Public Relations	D. Nakles	Walker-Vaicore	D. Kiefer	G. Groninger
Univ. Indus. Rel.		G. Street		J. Humphrey
MSU Student Sec.	M. Hawley	M. Hawley		
SVEC Rep.	D. B. Todd	G. Constan		R. Wrubel
Ch. E. Questionnaire			P. Bork	

AICHE MID-MICHIGAN SECTION OFFICERS

1977-78

Job

Elected

Chairman	N.	Drake
Vice-Chairman	J.	Bleiweiss
Secretary	V.	Fauver
Treasurer	A.	Vogel
Director - Dow	R.	Johnson
Director - DC	C.	Yorimoto
Director - At Large	S.	Daniels

Appointed

Arrangements	L.	Washington
Awards	L.	Robbins
Career Guidance		
Certification, Reg.	W.	Kuhlman
Employee Relations		
Environ. Proj.		
Info. Systems	D.	Fear
Membership	D.	Camp
Newsletter Ed.	N.	Scheffler
Newsletter		
Professional Dev.	S.	Buck
Program	J.	Bleiweiss
Public Relations	W.	Allen
Univ. Indus. Rel.		
MSU Student Sec.		
SVEC Rep.	D.	Todd
Ch. E. Questionnaire		
Nominations	P.	Stone

AICHE MID-MICHIGAN SECTION OFFICERS

	1978-79	1979-80	1980-81	1981-82
<u>Job Elected</u>				
Chairman	J. Bleiweiss	V. Fauver	D. Camp	W. Kuhlman
Vice-Chairman	V. Fauver	P. Bork	W. Kuhlman	W. Kern
Secretary	R. Johnson	D. Camp	S. Buck	R. Seiss
Treasurer	P. Bork	S. Buck	W. Allen	W. Allen
Director - Dow	D. Camp	L. Washington	R. Seiss	K. Fox
Director - DC	D. Beshgetoor	J. Gray	J. Gray	D. Beshgetoor
Director - At Large	S. Buck	D. Kalmbach	A. Vogel	H. Graves
<u>Appointed</u>				
Arrangements	R. Seiss	A. Getzin	A. Getzin	A. Getzin/et al
Awards	P. Stone	J. Bleiweiss	V. Fauver	W. Allen
Career Guidance		S. Buck		
Com. Relations		J. Bleiweiss		
Nominations		J. Bleiweiss		
Environ. Proj				
Info. Systems	D. Fear	S. Sandor	S. Sandor	A. Duncan
Membership	L. Washington	R. Seiss	K. Swogger	A. Duncan
Newsletter Ed.			D. Kalmbach	
Newsletter	L. Hanrahan			
Professional Dev. Program	A. Vogel	W. Allen	W. Kuhlman	D. Beshgetoor
Public Relations	V. Fauver		Ad Hoc Committees	Ad Hoc Committees
Univ. Indus. Rel	W. Allen			
MSU Student Advisor	M. Hawley	M. Hawley	K. Fox (MSU visit)	K. Fox (MSU visit)
SVEC Rep.	D. Todd	D. Todd	D. Todd	D. Todd
Mini-Chem Show		V. Fauver	V. Fauver	V. Fauver

AICHE MID-MICHIGAN SECTION OFFICERS

<u>Job</u>	<u>1982-83</u>	<u>1983-84</u>
<u>Elected</u>		
Chairman	W. Kern	D. Beshgetoor
Vice-Chairman	D. Beshgetoor	T. Brownlie
Secretary	L. Rangel	A. Duncan
Treasurer	N. Lake	N. Lake
Director - Dow	D. Eigsti	R. Seiss
Director - DC	C. Kendziorski	H. VanDeursen
Director - At Large	L. Robbins	S. Daniels
<u>Appointed</u>		
Arrangements	T. Brownlie	
Awards	H. Schiefer	
Career Guidance		
Com. Relations		
Employee Relations		
Environ. Proj.		
Professors Workshop	G. Constan	W. Brasie
Membership	A. Duncan	J. Lyon
Newsletter Ed.	J. Lyon	
Newsletter	H. VanDeursen	
Professional Dev. Program	R. Seiss	
Public Relations	Chr/et al	
Univ. Indus. Rel.	K. Fox	
MSU Student Sec.		
SVEC Rep.	D. Todd	
Mini-Chem Show	V. Fauver	