

# AIChE®

## Chicago Columns

Chicago Section e-newsletter

September 2008

### September Meeting Notice

#### Upcoming Events:

Register NOW!

> September 22 Chicago Section Meeting Thiele Award Presentation and

“Performing Science in Low Earth Orbit: What is it like, what have been learned and what is the potential”

> September 22 - 23: Midwest Regional Conference

### “Performing Science in Low Earth Orbit: What is it like, what have we learned, what is the potential”

By: Professor Al Sacco

Northeastern University Department of Chemical Engineering  
Former Space Shuttle Astronaut

**Date:** September 22, 2008

**Location:** UIC Student Center East (SCE)  
Illinois Room AB  
University of Illinois at Chicago (UIC)  
750 South Halstead  
Chicago, IL 60607

#### *Agenda:*

4:30-6:30 pm Book Signing\*, Social & Registration  
6:30-7:30 pm Dinner  
7:30-8:00 pm Thiele Award Presentation to  
Dr. Robert Lyczkowski of Argonne Labs  
8:00-9:00 pm Professor Sacco's Presentation

**Dinner Choices:** Chicken Marsala or  
Medley of Marinated Roasted Vegetables  
with salad, Green Beans Provencal, Parmesan Risotto  
Key Lime Pie for dessert

**Cost:** Professionals - \$35  
Students - \$5

Please register at:  
[www.aiche-chicago.org](http://www.aiche-chicago.org)

\*JP Clark, HS Fogler,  
N Sankaran, GP Towler, and others.  
Books available for purchase.

Further information at: <http://www.aiche-chicago.org/>

**Chair's Corner:**

Welcome to AIChE Chicago Section's new year for 2008 - 2009. I am Pat Shannon and I will serve as Section Chairman this year.

Just like opening day of baseball season or the beginning of classes in our schools each fall, it's good to set some goals for any activity. It has been said, "If you don't know where you're going, you won't know when you get there."

I propose a modest set of goals for this year, including:

1. Broaden Section membership.
2. Make AIChE membership more valuable to each member.
3. Strengthen our alliances with all of the organizations which employ our members, public and private, industrial, educational, governmental.
4. Turn more members into active volunteers within the Section.

Improve our Section's YPAB.

AIChE can be a great resource to each of us in our careers:

Source of technical information to do our jobs.

Source of networking to find new positions.

Source of lifetime learning that we all need to keep ourselves current in this high technology profession.

Source of relationships that can last a lifetime.

Source of professional development hours which are required to keep your professional engineers' license current.

Support system when you need someone to tell your troubles to who may understand you because they have been in a similar situation.

Source of insight into how other engineers and/or organizations help you develop your full potential.

A past section chairman has previously discussed "value added membership" in this space. This is an interesting phrase. I believe that each of us should understand what we get from paying our AIChE dues and/or participating in the local section. It might be networking, keeping up with old friends or the opportunity to grill an after dinner speaker at the monthly meetings.

Your Board of Directors very much wants to support and advance ideas and events which will contribute additional added value to your membership. We hope to facilitate the exchange of ideas which a society like AIChE can foster. Please feel free to forward any comments or ideas to any board member. You can find us listed at [www.aiche-chicago.org/section/info/board](http://www.aiche-chicago.org/section/info/board) members.

I'm sure that many of you have heard that this is the centennial year for the AIChE. That's a wonderful testimony the continuing value of chemical engineering research and practice in the United States over the last 100 years.

Less well known is the fact that the first AIChE local section was organized in Chicago in 1924. Members of our section have made notable contributions to engineering technology in manufacturing, research and education. This is our legacy, to be leaders in the chemical engineering community.

I ask you to help continue to make the section relevant far into the future. Please volunteer some of your time to help make this organization stronger and more vital to all of our members in Chicago.

I want to take this opportunity to thank each volunteer who has given their time to help make the Chicago Section successful, especially the current Board Members and Committee Chairs. I'm sure that they would agree that, unlike many things we do, the rewards of active involvement are generally much more than the effort put forth.

While everyone connects with a person, place, project, invention, etc in a different way, many people say that their involvement in section activities has given them a definitive boost in their career or in other areas of their personal life and relationships with others. I strongly urge you to contact myself, or any other board member, to discuss how you can contribute to our continued success.

*Patrick H. Shannon*  
*Middough, Inc.*

## DR. ROBERT LYCZKOWSKI WINS THE 2008 ERNEST W. THIELE AWARD

Congratulations to Dr. Robert Lyczkowski, Chemical Engineer at Argonne for being awarded the 2008 Ernest W. Thiele award!



This prestigious award will be presented to Dr. Lyczkowski at the September 22nd meeting of the Chicago AIChE section at the University of Illinois at Chicago. Dr. Lyczkowski is recognized for his innovative application of multiphase theory and computational fluid dynamics in the areas of nuclear, fossil and biochemical engineering.

He has had an outstanding record of accomplishments demonstrated by patents and over 125 publications. In our field of chemical engineering, his contributions have lead to better understanding of fluid dynamics. Dr. Lyczkowski has served in many academic roles at IIT as a teacher, advisor and on thesis committees in the Chemical Engineering Department. He has also served our professional society by presenting short courses, seminars, and chaired numerous conferences at AIChE meetings.

Dr. Lyczkowski received his B.S. Ch. E. at the Cleveland State University, and his MS and PhD at IIT.

The Ernest W. Thiele award is presented annually to a Midwest region member of AIChE who has made outstanding contributions to advance the practice of Chemical Engineering. The award is sponsored by BP, and consists of a plaque and a \$1000 honorarium.

Please join us in congratulating Dr. Robert Lyczkowski on his achievement.

*By Jim Simnick, BP, Chair Thiele Award Committee*



## 2008 AIChE Midwest Regional Conference

September 22<sup>nd</sup> and September 23<sup>rd</sup>, 2008  
University of Illinois at Chicago (UIC), Chicago, IL

The [American Institute of Chemical Engineers \(AIChE\)](#) in conjunction with the [AIChE Chicago Local Section](#) and the [Department of Chemical Engineering at the University of Illinois at Chicago \(UIC\)](#), is holding the 2008 Midwest Regional Conference from September 22<sup>nd</sup> to September 23<sup>rd</sup>.

This **two-day symposium** features programming in the following topics:

### Monday:

- **Refining and Petrochemicals**
- **Energy Supply and Consumption**
- **Environmental, Safety, and Occupational Health**

### Tuesday:

- **Pharmaceuticals**
- **Food Manufacturing**
- **Biofuels**
- **Industrial & Academic Collaborations**

These sessions will feature invited presentations by leading industrial and academic professionals and promise to focus on the challenges and the opportunities that chemical engineers and other technical professionals face in today's rapidly changing technological landscape.

Further enhancing the symposia is a program coordinated by the Young Professionals Advisory Board (YPAB) that will provide an opportunity for young engineers to attend the tutorial technical programming on Monday morning, followed by an afternoon session dedicated to 'soft skills' required for a successful career. In addition to these sessions, this year's program will also include a **high school student outreach program** for local schools.

Other highlights include:

- Opening Remarks for Symposium: **Prof. Scott Fogler, President-Elect, AIChE**
- Monday Keynote Speaker: **Carlos Cabrera, CEO and President, UOP**
- Tuesday Keynote Speaker: **James Foster, Director of R&D, ADM**
- A poster session and book signing (featuring authors of well known chemical engineering textbooks) will be held following the technical sessions on Monday
- A monthly meeting for the AIChE Chicago Section will be held on Monday evening, with guest speaker **Dr. Al Sacco— Professor at Northeastern University and former NASA astronaut.**

**You benefit from** learning about the new areas of research, development & new applications while networking with leading authorities in these areas. You will also earn **Professional Development Hours** for attendance, which can be used to keep **P.E.** and other licenses current.

**[REGISTER TODAY](#)**

**[For more details, visit http://www.aiche.org/Conferences/chicagoconference.aspx](http://www.aiche.org/Conferences/chicagoconference.aspx)**

## Registration Form - 2008 AIChE Regional Conference

September 22nd and 23rd, 2008 at the University of Illinois at Chicago, Chicago, IL

(Please Print Clearly)

Last Name		First Name		MI
Company Name				
Mailing Address				
City		State	Zip	
Telephone	Fax	E-Mail Address		AIChE Membership No.

### REGISTRATION FEES

	ONE DAY		
	By 8/15/2008	By 9/15/2008	On-Site
AIChE Members	\$ 125	\$ 150	\$ 175
Non-Members	\$ 150	\$ 175	\$ 200
AIChE Young Professionals*	\$ 75	\$ 100	\$ 125
Students	\$ 10	\$ 10	\$ 20
	TWO DAY		
	By 8/15/2008	By 9/15/2008	On-Site
AIChE Members	\$ 200	\$ 225	\$ 250
Non-Members	\$ 225	\$ 250	\$ 275
AIChE Young Professional*	\$ 125	\$ 150	\$ 175
Students	\$ 15	\$ 15	\$ 25
Monday Evening Dinner**	AIChE Chicago Monthly Meeting, Featuring Prof. Al Sacco, Northeastern University Professor and former NASA astronaut on the Space Shuttle		
	AIChE Members, Non-Members, Young Professionals		\$ 35
	Students		\$ 5
	Dinner Options: <input type="checkbox"/> Chicken <input type="checkbox"/> Vegetarian		
	*35 years old or younger **Dinner for on-site registrants subject to availability		

Payment by Check (payable to AIChE, Chicago Section)  
Total Enclosed \$ \_\_\_\_\_

Payment by Credit Card  MasterCard  Visa  Amex

CC# \_\_\_\_\_

Card Holder \_\_\_\_\_ Exp. \_\_\_\_\_

Signature \_\_\_\_\_

Total Charge \$ \_\_\_\_\_

Please mail registration and the payment to:

Jeffery Perl

Chicago Chem Consultants Corp  
14 N. Peoria Street, Suite 2C  
Chicago, IL 60607

Phone: (312) 226-2436

Fax: (312) 226-8886

Parking is available for \$11/day in the UIC lot at the northeast corner of Taylor and Halsted (enter on Taylor).

**REGISTER TODAY**

For more details, visit <http://www.aiche.org/Conferences/chicagoconference.aspx>

**Thank You!**

## **Midwest Regional Conference Sponsors**

### **Gold Sponsors**

BP

UOP

### **Silver Sponsors**

Baker Engineering and Risk Consultants

Citgo

Gas Technology Institute (GTI)

Middough, Inc.

### **Bronze Sponsors**

ADM

Ambitech Engineering Corporation

Chicago Chem Consultants (CCC)

ExxonMobil

Motorola

## **High School Student Outreach Program Sponsors**

### **Gold Sponsors**

BP

### **Bronze Sponsors**

Ambitech Engineering Corporation

Gas Technology Institute (GTI)

## BENEFITS OF AIChE MEMBERSHIP

*By Steve Schade, Ambitech Engineering Corporation, Secretary Chicago Section AIChE*

Joining the national organization yields many benefits:

1. Access to the Knovel library, which contains properties and other technical data
2. A discount on technical publications and books
3. Technical conferences
4. Career advancement and support, including a resume database and a job search engine
5. An annual subscription to Chemical Engineering Progress
6. The Member Directory
7. Members-only insurance plans, including life, health, dental, auto, and home
8. Special financial products and services, such as group insurance, small business and personal financial benefits
9. UPS discounts
10. Car rental discounts from Hertz or Avis

Plus, there are even more advantages to joining the Chicago Section:

- **Provides opportunities to enhance communication / leadership skills**
  - **By presenting / participating at monthly meetings / technical seminars**
  - **Opportunities to network with other chemical engineers outside of work**
  - **Opportunity to grow / practice leadership skills in non-threatening, low-risk environment**
  - **Young professionals Group – informal networking, special technical programs**
  - **Non-technical seminars**
    - **Focusing on business, career, communication skills, etc.**
  - **Student outreach programs**
    - **Representing chemical engineers for career days / class room visits for grades K – 12.**
    - **Making presentations at university student chapter meetings**
    - **Reviewing student resumes / performing mock interviews**
    - **Annual Student poster contest & awards programs**
    - **Participation in regional student conferences**
- **Enhance technical skills by attending different functions**
  - **AIChE Symposiums (usually one per year)**
    - **Past Symposiums included the following topics**
      - **Process Intensification**
      - **Nanotechnology**
      - **Refining**
  - **Monthly Meetings – focus on a particular topic**
    - **Past meetings topics were the following**
      - **Environmental issues**
      - **Energy**
      - **Facility tours**
      - **Attendance earns professional development hours for PE**
    - **Joint Meetings with other professional societies**
  - **AIChE National short courses can be hosted here in Chicago**
  - **AIChE National Meetings**
  - **Recognition of Technical Achievements**

## Upcoming Meetings



15-Oct	GPO Energy and CO2 Footprint Management	
19-Nov	OSHA Compliance	
22-Jan	Technology of Efficient Conversion of Biomass to Fuel (Ethanol)	
18-Feb	GE Wind Turbines and Nuclear Power	
18-Mar	TBD	
15-Apr	Infrastructure Safety - bridges, refineries, aircraft	Jan Achenbach
13-May	FDA Food Safety	

---

### NOMINATIONS REQUESTED FOR THE ERNEST W. THIELE AWARD

The Ernest W. Thiele award is sponsored by BP and recognizes the outstanding contributions to our profession by a Midwest region chemical engineer. This award was established by the AICHE Chicago Section and is presented annually to a Midwest region AICHE member. This internationally recognized award consists of an engraved plaque and \$1000 honorarium presented at our sectional meeting.

Nomination forms and additional information can be obtained from the Thiele Committee Chair.

Thank You for your recent nominations and this years Thiele award recipient will be announced soon. One of the highest honors a distinguished chemical engineer can receive is our Chicago Section Thiele award. Please consider nominating a deserving engineer for this prestigious award.

Jim Simnick  
BP Amoco Complex, J-8  
150 W. Warrenville Road  
Naperville, IL 60566

Ph 630-420-5936  
fax 630-420-4832



## Short Course on

# Pending Indiana Continuing Engineering Education Rules

Vincent P. Drnevich, P.E., Ph.D.

**Description:** This is a one-hour short course on the Pending Indiana Continuing Engineering Education Rules. This presentation will be designed to satisfy the proposed 1 hour Cont. Ed. requirement on “ethics or Indiana statutes and rules.” The charge for this session is \$40 (\$25 for NSPE/ISPE members). A certificate of 1.0 PDH will be provided at the completion of the course. This short course will be presented at various locations in Indiana. **For more information or to request a presentation to your group, contact: [drnevich@purdue.edu](mailto:drnevich@purdue.edu)**

## Syllabus:

1. What are Continuing Education Requirements?
2. History and Background
  - a. Nationally
  - b. Indiana
3. Proposed Indiana Rules (See handout with draft rules)
  - a. Definitions
  - b. Hours Required
  - c. Distance Learning
  - d. Approval of continuing education programs
  - e. Reporting of continuing education
  - f. Audit of claimed continuing education
  - g. Waivers for hardship cases
  - h. Inactive Status for non-compliance
  - i. Reactivation from Inactive Status
4. Comparison with requirements in other states and the Continuing Professional Competency (CPC) recommendations of the National Council of Examiners for Engineering and Surveying (NCEES)
  - a. Key differences
  - b. Possible changes to the Indiana Professional Registration Law
5. Current Status in Indiana
  - a. Bureaucratic process
  - b. Deadline for implementing for the 2010 license renewals
  - c. Possible implementation scenarios
6. Strategy for Compliance
  - a. Choosing activities acceptable to Board
  - b. Records of Continuing Education activities (See handout for keeping personal records)
7. Closing Comments, Questions, and Discussion
8. Session Evaluations
9. Presentation of Continuing Education Certificates for the session

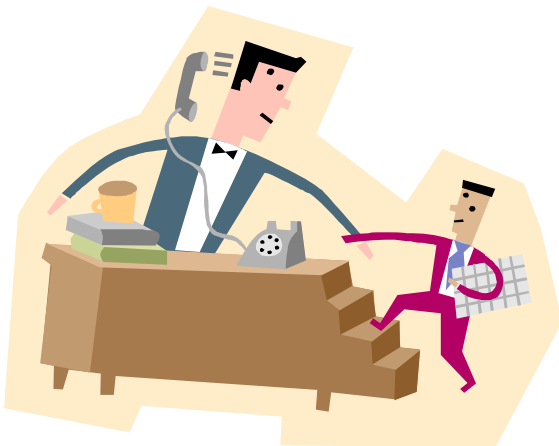
**We want you for AIChE-Chicago!**

**We need your help!**

How many opportunities can you find to learn project management, delegation and leadership skills for free? Becoming an officer in the Chicago Section of AIChE is such an opportunity. While you're learning new skills, your local network grows. Just about all of us are either undergoing a career change, contemplating a career change, or are wondering if our career will be changed for us. Volunteering with AIChE is a way to add skills and accomplishments to your resume.

[aichechicom@aiche-chicago.org](mailto:aichechicom@aiche-chicago.org)

<http://www.aiche-chicago.org/volunteerrequest.htm>



**SUBMITTING ARTICLES TO AICHE COLUMNS**

We are now initiating a regular Newsletter and are welcoming people to e-mail any material they would like to appear on the newsletter. These can be job postings, advertisements for upcoming committee meetings, articles, general advertisements or anything else you may want to submit. To submit material e-mail your material to [aichechicom@aiche-chicago.org](mailto:aichechicom@aiche-chicago.org) with "newsletter article request" as a subject heading.



**AICHE Publicity Committee Fees**

	Academic (non-AICHE)		Company		Recruiters	
	Per Month	Per Year	Per Month	Per Year	Per Month	Per Year
<b>Advertisements (3X3)</b>	100	450	150	675	N/A	N/A
<b>Half-Page (~7"x 4.5")</b>	280	1260	420	1890	N/A	N/A
<b>Job Posting (Size?)</b>	50	225	100	450	250	N/A
<b>Special Sizing</b>	Contact Publicity Committee					

- For the purchase of a year ad, customers have the option of changing ads/jobs month to month.
- They are not stuck with the same ad/logo for the whole year.
- Student and AIChE Member Related Postings are Free

