

AIChE®

Chicago Columns

Chicago Section e-newsletter

April 2007

AICHE CHICAGO 2007 SYMPOSIUM RECENT DEVELOPMENTS IN REFINING, ENERGY, AND BIOTECHNOLOGY

Upcoming Events:

- > **April 11: AIChE-Chicago APRIL Meeting & POSTER SESSION**
- > **May 9: AIChE-Chicago May Meeting**
Save the date
- > **September 25 -26: Fall Symposium** **Save the date**
- >

INSIDE THIS ISSUE:

Chair's Corner	1
April Meeting: Explosion Phenomena, Impacts, and Structural Mitigation	2
IIT Alumni Dinner	3
Thiele Award	3
Job Posting	4
Call for Volunteers	5
Submitting Articles	5

On September 25-26 2007, the Chicago Section of the American Institute of Chemical Engineers will host a symposium on the "Recent Developments in Refining, Energy and Biotechnology." This years conference will be of interest to all practicing chemical engineers interested in the future developments of engineering.

IFT (Institute of Food Technologists) will cosponsor the event with the Chicago local section. The 2007 symposium will feature a cutting edge multi-disciplinary topics that will bring together the new emerging frontiers in chemical engineering to a single event. Topics presented will include bio-fuels, foods, refining and petrochemicals, and energy and conservation. This will take place at the University of Illinois at Chicago's UIC Student Center East (formerly Chicago Circle Center) 750 S. Halsted St, Chicago IL 60607.

If you are interested in submitting an abstract for either plenary or poster presentation, please forward an abstract and title to aichechicago@gmail.com. Chemical engineers have solved many problems in energy, materials, and biotechnology. As our world changes, we want this conference to show the dynamic attributes of practicing chemical engineers and how the knowledge engineers have today will solve the problems of tomorrow. We plan to have speakers from both industry and academia and this symposium is open to the public.

One of this year's goals is to promote the field of chemical engineering to high school and middle school students. We feel it is our duty to motivate the younger members of our profession on the utility of chemical engineering in the future. We ask that you take time to identify a young potential engineer and motivate them on the many benefits to being an engineer and motivate to come to the conference.

For updated information on the Symposium, please refer to <http://www.aiche-chicago.org/symposium/>

- S. Thomas King,
tom.king@uop.com

Symposium Chairs:

Energy Session –Mike Schultz,
UOP, Mike.Schultz@uop.com

Food Session – J. Peter Clark,
jpc3@att.net

Refinery - Jerry Wilks, CITGO,
gwilks@citgo.com

Bio-Fuels - Patrick Shannon,
Middough, Shannonp@middough.com

HS Student Outreach – Alan Zagoria, UOP,
alan.zagoria@uop.com



**AICHE-CHICAGO APRIL MEETING &
POSTER SESSION
APRIL 11, 2007**

**"EXPLOSION PHENOMENA, IMPACTS,
AND STRUCTURAL MITIGATION"**

*MIKE MOOSEMILLER, BAKER ENGINEERING AND
RISK CONSULTANTS*

LOCATION:

CHEMICAL ENGINEERING BUILDING (CEB)
ROOMS CEB 218 AND CEB 230

UNIVERSITY OF ILLINOIS AT CHICAGO
810 S. CLINTON STREET
CHICAGO, IL 60607



Agenda:

Registration 6:00 - 6:30 pm

Dinner & Poster Viewing 6:30 - 7:30 pm

Speaker & Scoring 7:30 - 8:30 pm

Announcement of Winner 8:30 - 9:30 pm

Cost:

\$25.00 for Members

\$30.00 for Non Members

\$5.00 for AIChE student chapter members

"Facility siting" is a subject that has come to the attention of more people in recent years with the advent of the OSHA Process Safety Management rule, API's Recommended Practice 752, and a CCPS book on the subject. Some tragic incidents that have occurred in recent years have caused existing facilities to review this subject with greater rigor. The boom in construction in some chemical engineering sectors has led to greater interest in planning facility layouts and building design to minimize the chances that process failures will result in injuries to workers.

The key driver for many or most facilities is the impact of potential explosions on building occupants, and so it is important to accurately quantify the strength and impacts of explosion events. This presentation describes the critical variables involved in characterizing explosion hazards and their effects on structures and their occupants. These variables are illustrated by videos of explosion and structural integrity tests performed at Baker-Risk's field test facilities on behalf of the Explosion Research Cooperative. Lastly, methods for structural design and retrofitting to manage explosion risks are described.

Please visit <http://www.aidhe-chicago.org/meetings.htm> for further details and registration.



NOMINATIONS REQUESTED FOR THE ERNEST W. THIELE AWARD

The Ernest W. Thiele award is sponsored by BP and recognizes the outstanding contributions to our profession by a Midwest region chemical engineer. This award was established by the AIChE Chicago Section and is presented annually to a Midwest region AIChE member. This internationally recognized award consists of an engraved plaque and \$1000 honorarium presented at our sectional meeting.

Nomination forms and additional information can be obtained from the Thiele Committee Chair.

Thank You for your recent nominations and this years Thiele award recipient will be announced soon. One of the highest honors a distinguished chemical engineer can receive is our Chicago Section Thiele award. Please consider nominating a deserving engineer for this prestigious award.

Jim Simnick
BP Amoco Complex, J-8
150 W. Warrenville Road
Naperville, IL 60566

Ph 630-420-5936
fax 630-420-4832
email: james.simnick@bp.com



Illinois Institute of Technology (IIT) AIChE Alumni Dinner

Hosted by IIT's student chapters of Engineers Without Borders and AIChE-Chicago



JOB POSTINGS



POSITION: Project Engineer

REPORTS TO: Business Development

SALARY: Competitive salary, including eligibility for incentive compensation of up to up to 15% of base salary based on corporate financial performance and individual goal achievement.

SUMMARY: **RED's mission is to profitably reduce greenhouse gas emissions through the development and operation of industrial energy recycling plants.** The Project Engineer will be responsible for the techno-economic assessment of project leads. This will require the Project Engineer to identify and assess recycled energy opportunities at industrial sites. The Project Engineer must understand process systems as they relate to energy systems and have the capability to quickly, and accurately, identify techno-economic optimal designs for energy recovery systems. Job requires both high level first pass engineering designs and support of detail engineering when/as appropriate. The Project Engineer will interface closely with development, legal, and financial staff.

Thomas P. O'Brien
SVP Business Development
Recycled Energy Development, LLC
740 Quail Ridge Drive, Suite 740
Westmont, Illinois 60559
tobrien@recycled-energy.com

Unlimiited POTENTIAL

Graduate engineering programs that perform!

iit.edu
312.567.3020



ILLINOIS INSTITUTE OF TECHNOLOGY

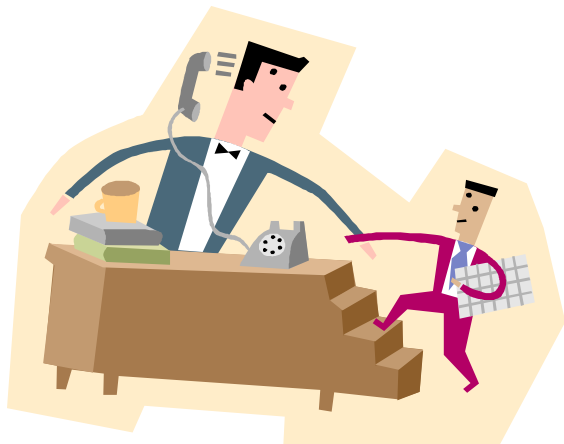
We want you for AIChE-Chicago!

We need your help!

How many opportunities can you find to learn project management, delegation and leadership skills for free? Becoming an officer in the Chicago Section of AIChE is such an opportunity. While you're learning new skills, your local network grows. Just about all of us are either undergoing a career change, contemplating a career change, or are wondering if our career will be changed for us. Volunteering with AIChE is a way to add skills and accomplishments to your resume.

aichechicom@aiche-chicago.org

<http://www.aiche-chicago.org/volunteerrequest.htm>



SUBMITTING ARTICLES TO AICHE COLUMNS

We are now initiating a regular Newsletter and are welcoming people to e-mail any material they would like to appear on the newsletter. These can be job postings, advertisements for upcoming committee meetings, articles, general advertisements or anything else you may want to submit. To submit material e-mail your material to aichechicom@aiche-chicago.org with "newsletter article request" as a subject heading.

