

Women's Initiatives Committee

Newsletter

Message From the Chair

Dear Colleagues,

I am truly excited to take on the 2015 AICHe Women's Initiatives Committee chair position. WIC made great strides this past year to build onto our platform of educational and networking opportunities through the addition of programming focused on retention and reentry. This growth was made possible through hard work by our volunteers, Executive Committee, and our past-chairs. I want to especially highlight my predecessor, Selma Mededovic Thagard, whose leadership was pivotal for implementation of a critical new programming area focused on Women's Workplace Retention and Reentry (W2R2). Additionally, I want to acknowledge Vice-Chair Caryn Heldt for her leadership as 2014 Fall Programming Chair and her dedication in organizing another successful year of workshops and networking events.

I would like to build on this momentum through further development of our new and existing programming. WIC's mission will continue to promote entry, development, and full participation of women in the Institute and the profession. We plan to continue our successful programming at the Spring and Fall meetings with activities that include educational workshops, networking luncheons/mixers, and

panel discussions. We also would like to increase participation in these events through joint programming with other AICHe committees, such as the Minority Affairs Committee (MAC) and the Young Professionals Committee (YPC). We will also expand our focus on retention and reentry through development of targeted programming for leadership looking for ways to improve retention and for women seeking reentry after a leave of absence. This is an important area in which we can make a significant impact upon the chemical engineering community. Of course, you can learn more about all of our programming in this newsletter.

To close, I would like to extend my sincere thanks to all the volunteers, participants, sponsors, and AICHe and WIC Executive Committee leadership who make these activities possible. I look forward to a great 2015 and hope to see you at a future WIC event!

Sincerely,
Megan E. Donaldson
Associate Scientist
The Dow Chemical Company



2015 AICHe Spring Meeting Announcement Austin, TX April 26—30



Women's Initiatives Committee (WIC) Luncheon
Monday, April 27, 2015, 12:00 pm to 1:30 pm

"Stand, Serve, Smile .. Succeed"
Presented by Deborah Grubbe
Our luncheon will feature keynote speaker **Deborah Grubbe**. Deborah

was Vice President of Group Safety at BP, and held corporate director roles in safety, operations and engineering at DuPont. She was a member of the NASA Aerospace Safety Advisory Panel and consulted in safety culture with the Columbia Shuttle Accident Investigation Board. She currently works around the world helping corporations address their operational and process safety issues.

This luncheon is priced at \$20 and advanced registration is required. If you haven't yet registered for the meeting, you can add this ticketed event when you register. If you have already registered for the meeting, please call Customer Service at 800-242-4363 or 203-702-7660 (outside of US) to add this event referencing item #102.

Please join us for a great opportunity to meet our luncheon speaker and network with colleagues.

Women's Initiatives Committee (WIC) Executive Committee Meeting

Monday, April 27, 2015, 3:30 pm to 4:30 pm

Join us if you are interested in volunteering for WIC or want input into our activities.

Volume 2, Issue 1
March 2015

Inside this issue:

2014 Annual Meeting Workshops 2

2014 Annual Meeting Luncheon and Awards 3

W2R2 Workshop 3

2014 Executive Committee 4

Please join our social media groups. Search for the group name "AICHe Women's Initiatives Committee" on both Facebook and LinkedIn.



Here, we are hoping to create networks between women undergraduates, graduate students, post-docs, industry professionals, and academics. Please feel free to start discussions and post relevant articles.



Workshops

Women Undergraduates in Chemical Engineering: Graduate School Panel and Industrial Career Opportunities

- Graduate School Panel. Current female graduate students shared their experiences and perspectives on graduate school. This interactive panel allowed undergraduate students to network and ask questions about what graduate school is really like. We would like to thank **Elizabeth Horstman (UIUC)**, **Nicole Devlin (Purdue)** and **Jessica Larsen (Auburn)** for their participation on the panel.

Women Graduate Students and Postdoctoral Fellows in Chemical Engineering: Developing Your Career

Our featured speaker **Dr. Karl Jacob** and **Dr. Megan Donaldson** from The Dow Chemical Company presented the following two topics:

- Thoughts on starting an Industrial Career in Chemical Engineering: This workshop focused on strategies for enabling a successful career transition through development of critical skills that go beyond your technical proficiency
- Perspectives from a Recruiter: This workshop provided an insider's knowledge on the recruiting process to share strategies for obtaining a position in chemical engineering.

Other programming included:

- Panel: Academic vs. Industrial Careers. This discussion featured women with careers in academic and industrial fields. We would like to thank the following panelists for their participation: **Michelle Kassner Young (Chevron)**, **Sally Ng (Georgia Tech)**, **Lindsey Stamm (Gwinnett School of Mathematics, Science and Technology)**.
- COACH: Strong Women/Strategic Performance. This workshop focused on how to be more effective in meetings and negotiations, how to be strategic rather than reactive, how to negotiate with multiple tactics and connect positively with your meeting or negotiation partners.

Women Assistant Professors in Chemical Engineering: Developing Your Career

- COACH: Strong Women/Strategic Performance. See above for description of this session.
- Round Table Discussion. This interactive discussion focused on managing research groups, obtaining funding, preparing for tenure, etc. We would like to thank the following panelists for their participation: **Katherine Stebe (Professor at UPenn)**, **Julie Liu (Associate Professor at Purdue)** and **April Kloxin (Assistant Professor at UDelaware)**.



"The workshop was wonderful."

"This workshop was excellent and very informative. It was great to hear from three very different perspectives for both the grad school panel as well as the industry vs academia."

"Everything was very interesting and very helpful."

WIC Graduate Student and Postdoctoral Fellow Workshop Exit Survey 2014



"The coach session was great!"

"Thanks for organizing such a helpful and informative workshop!"

"Thanks for organizing this event."

WIC Assistant Professor Workshop Exit Survey 2014

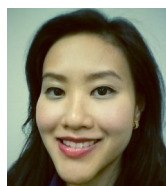


2014 Travel Award Winners

Carissa Young
Heather Mayes
Melissa Takahashi
Elizabeth Horstman
Sarai Meyer
Nicole Devlin

Spotlight

2009 Travel Award Winner Dr. Intan Hamdan



I come from the beautiful country of Malaysia. Growing up, I was fortunate to have had a very global experience having lived in Singapore, Hong Kong, Costa Rica and the USA. When I joined Purdue University as a Chemical Engineering student, I started getting involved in the Women in Engineering Program, which led me to AIChE's WIC. It's been over 5 years since I received the WIC travel award! Since then, I have completed a graduate internship at Pfizer, received my Ph.D, and moved to Houston to join The Dow Chemical Company. With all the exciting changes in my life, a wonderful constant has been my involvement with WIC. It brings me joy and purpose to belong to a supportive network of empowering women in Chemical Engineering!

Luncheon



Keynote speaker: Dr. Jennifer Sinclair Curtis
"Thriving at Every Career Stage"

Hilton Atlanta, Grand Ballroom D, November 17, 2014

At our annual networking luncheon, **Dr. Jennifer Sinclair Curtis** shared her career trajectory and how she has obtained professional success while dealing with challenging situations in her personal life.

Dr. Jennifer Sinclair Curtis is Distinguished Professor of Chemical Engineering and Associate Dean for Research in the College of Engineering at the University of Florida. She received a B.S. in Chemical Engineering from Purdue University (1983) and a PhD in Chemical Engineering from Princeton University (1989). She is the co-author of over 100 archival publications and has given over 160 invited lectures at universities, companies, government laboratories and technical confer-

ences. She serves as Associate Editor of the International Journal of Multiphase Flow and the AIChE Journal for all manuscripts in the areas of particle technology and fluidization. She is on the Editorial Advisory Board of Powder Technology and co-editor of Chemical Engineering Education. She is a Fellow of AAAS, AIChE, and ASEE. She is a co-Chair of the National Academies' Chemical Science Roundtable.



Mentorship Excellence Award Winner



Dr. Christine Schmidt is the Pruitt Family Professor and Department Chair of the J. Crayton Pruitt Family Department of Biomedical Engineering at the University of Florida. She received her B.S. degree in Chemical Engineering from the University of Texas at Austin (1988) and her Ph.D. in Chemical Engineering from the University of Illinois at Urbana-Champaign (1995). Dr. Schmidt is an exceptional mentor and has contributed greatly to the mission of WIC – promoting the entry, development, and participation of women within AIChE and the profession of chemical engineering.

Women Workplace Retention and Re-entry (W2R2) Workshop

The W2R2 Initiative is designed to help individual members and industry with women's career navigation, work/life integration, and professional development. The W2R2 Initiative was launched at the 2014 AIChE Annual Meeting with a workshop immediately following the WIC luncheon. The keynote speaker was Dr. Nadya Fouad, a nationally recognized expert on employment issues, particularly in understanding the work choices of women. Following the keynote presentation, Dr. Fouad joined a panel discussion including representatives from several women's and professional organizations, each of whom discussed how her employer/organization is addressing women's recruitment, retention, and re-entry. Roundtable discussions gave participants an opportunity to discuss their own workplace experiences and employment strategies, with topics ranging from career change to flexible work schedules and to arranging temporary periods away from the workplace.



2014 WIC Executive Committee

CHAIR

Megan Donaldson
Associate Scientist
The Dow Chemical Company
MEDonaldson@dow.com

VICE CHAIR

Caryn Heldt
Assistant Professor
Michigan Technological University
heldt@mtu.edu

PAST CHAIR

Selma Mededovic Thagard
Assistant Professor
Clarkson University
smededov@clarkson.edu

TREASURER

Intan Hamdan
Associate Scientist
The Dow Chemical Company
IMHamdan@dow.com

SECRETARY

Heather Emady
Assistant Professor
Arizona State University
Heather.Emady@asu.edu

SENIOR ADVISOR

Caroline Reynolds
President
CR Solution
crsolns@texas.net

AICHE STAFF LIAISON

James Abel
jamea@aiche.org



Volunteers

COMMUNICATIONS

Julia Valla
Assistant Professor
University of Connecticut
valla@engr.uconn.edu

W2R2

Amy Beaird
abeaird@gmail.com

WIC Mission

The American Institute of Chemical Engineers (AIChE) Women's Initiatives Committee (WIC) will lead in promoting the entry, development, and full participation of women in the Institute and the profession through the following strategies:

- Develop / distribute resources on subjects pertaining to women in the profession.
- Mobilize AIChE to meet the needs of existing and potential female members of AIChE and the profession.
- Provide networking means for women in AIChE to use each other as resources.
- Increase the visibility of women within AIChE and the profession.

Donating to WIC is critical to having continuing programming. You can donate online now at <http://www.aiche.org/community/giving/donate>. Scroll to "Women's Initiatives" at the bottom of the page.

Also, look for a donation box for WIC when renewing your AIChE membership.