

## EQUIPMENT

**HEAT EXCHANGERS**

◀ Liquid Cooled

Air Cooled ▶

**FOR GASES & LIQUIDS!**

Talk Directly with Design Engineers!  
Blower Cooling Vent Condensing

**INDUSTRIAL HEAT EXCHANGERS**  
**XCHANGER**

(952) 933-2559 info@xchanger.com

**AARON** equipment company

**We Buy Equipment!**

We Are "Sniffing Out"  
Quality Process Equipment

- > Ribbon Blenders
- > Double Cone Dryers
- > Twin Shell Blenders
- > Paddle Mixers
- > Turbulizers
- > Tanks, Silos, Reactors
- > Screeners and more...

Tell Us What You Have For Sale

[www.aaronequipment.com/sniff](http://www.aaronequipment.com/sniff)

or call: **855-791-5109**

## DISPLAY, CLASSIFIED AND WEB ADVERTISING

**Nathan Lott**  
Global Sales Manager,  
Recruitment, Advertising and DIPPR

120 Wall Street,  
New York, NY 10005

**Tel:** 646-495-1361  
**Email:** nathl@aiche.org

## Build your Process Safety Knowledge with CCPS Courses from AIChE Academy

### Upcoming CCPS Public Courses

- Process Safety Boot Camp  
October 26 – 29, 2015 • Houston, TX
- Foundations of Process Safety  
November 16 – 19, 2015 • Manama, Bahrain
- HAZOP Studies/Advanced PHA Concepts Combo Course  
December 7 – 11, 2015 • New York, NY

Learn more and register at [www.aiche.org/academy](http://www.aiche.org/academy).

© 2015 AIChE 1261d\_15 • 09.15



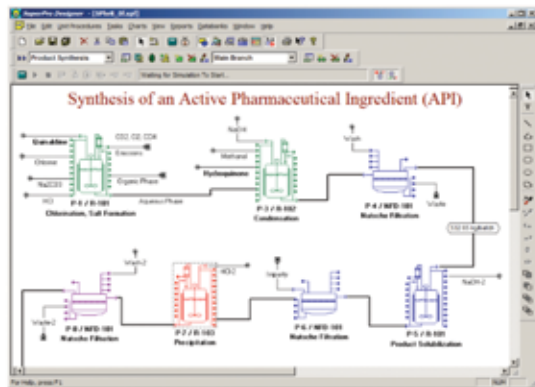
## ADVERTISERS' INDEX

Aaron Equipment Company <a href="http://www.aaronequipment.com/sniff">www.aaronequipment.com/sniff</a>	52
Aon Affinity <a href="http://www.aicheinsuranceplans.com">www.aicheinsuranceplans.com</a>	IBC
CASALE <a href="http://www.casale.ch">www.casale.ch</a>	5, 11
CD-adapco <a href="http://www.cd-adapco.com">www.cd-adapco.com</a>	9
Center for Electrochemical Engineering Research <a href="http://www.ohio.edu/engineering/ceer">www.ohio.edu/engineering/ceer</a>	T9
Comsol <a href="http://www.comsol.com">www.comsol.com</a>	51, BC
Intelligen <a href="http://www.intelligen.com">www.intelligen.com</a>	53
Master Bond <a href="http://www.masterbond.com">www.masterbond.com</a>	51
NewAge Industries <a href="http://www.newageindustries.com">www.newageindustries.com</a>	51
Northwestern Law <a href="http://www.law.northwestern.edu/msl">www.law.northwestern.edu/msl</a>	T7
Process Systems Enterprise <a href="http://www.psenderprise.com">www.psenderprise.com</a>	T5
RedGuard <a href="http://www.redguard.com">www.redguard.com</a>	7
Saudi Aramco <a href="http://www.aramco.jobs/cep">www.aramco.jobs/cep</a>	T3
SimSci by Schneider Electric <a href="http://www.software.schneider-electric.com/key">www.software.schneider-electric.com/key</a>	IFC
Xchanger <a href="http://www.xchanger.com">www.xchanger.com</a>	52

# Intelligen Suite®

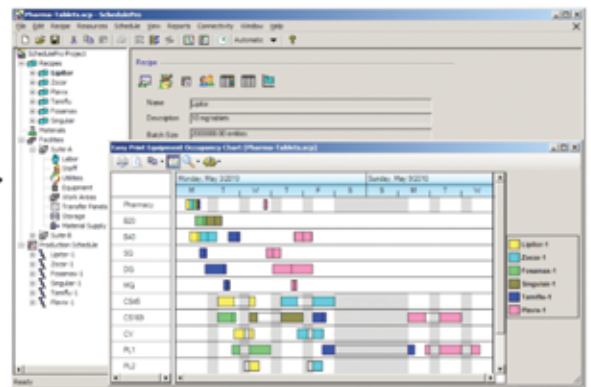
The Market-Leading Engineering Suite for Modeling, Evaluation, Scheduling, and Debottlenecking of Multi-Product Facilities

**SuperPro®**

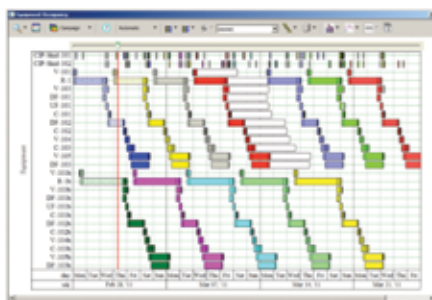


Use SuperPro Designer to model, evaluate, and optimize batch and continuous processes

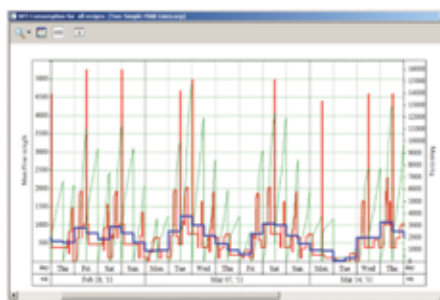
**SchedulePro®**



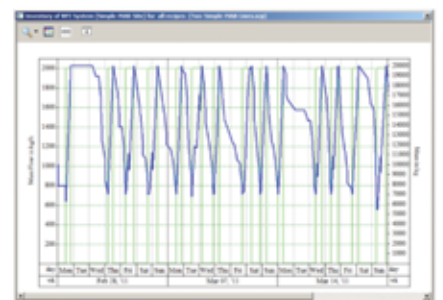
Migrate to SchedulePro to model, schedule, and debottleneck multi-product facilities



Easy production tracking, conflict resolution and rescheduling



Tracking demand for resources (e.g., labor, materials, utilities, etc.)



Managing inventories for input, intermediate, and output materials

**SuperPro Designer** is a comprehensive process simulator that facilitates modeling, cost analysis, debottlenecking, cycle time reduction, and environmental impact assessment of integrated biochemical, bio-fuel, fine chemical, pharmaceutical (bulk & fine), food, consumer product, mineral processing, water purification, wastewater treatment, and related processes. Its development was initiated at the Massachusetts Institute of Technology (MIT). SuperPro is already in use at more than 500 companies and 900 universities around the globe (including 18 of the top 20 pharmaceutical companies and 9 of the top 10 biopharmaceutical companies).

**SchedulePro** is a versatile production planning, scheduling, and resource management tool. It generates feasible production schedules for multi-product facilities that do not violate constraints related to the limited availability of equipment, labor, utilities, and inventories of materials. It can be used in conjunction with SuperPro (by importing its recipes) or independently (by creating recipes directly in SchedulePro). Any industry that manufactures multiple products by sharing production lines and resources can benefit from the use of SchedulePro. Engineering companies use it as a modeling tool to size shared utilities, determine equipment requirements, reduce cycle times, and debottleneck facilities.

*Visit our website to download detailed product literature and functional evaluation versions of our tools*

**INTELLIGEN, INC. • 2326 Morse Avenue • Scotch Plains, NJ 07076 • USA**

**Tel: (908) 654-0088 • Fax: (908) 654-3866**

**Email: [info@intelligen.com](mailto:info@intelligen.com) • Website: [www.intelligen.com](http://www.intelligen.com)**

**Intelligen also has offices in Europe and representatives in countries around the world**