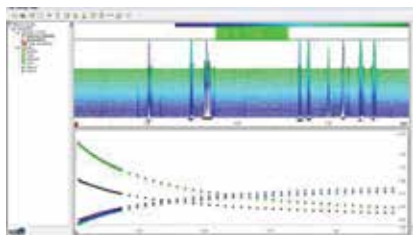


Software & Information Technology



NMR Software Evaluates Real-Time Data

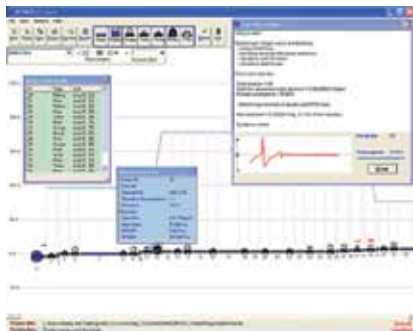


InsightMR provides data to support reaction optimization in a process development environment. The software for online nuclear magnetic resonance (NMR) analysis enables users to set up, monitor, and adjust key experimental parameters via a user-friendly interface. The complete workflow, from experiment setup to data processing, can be viewed, and data can be exported in multiple formats for additional analysis, facilitating strategic decision-making. This offering is appropriate for studying and optimizing organic reactions in both industrial and academic settings.

Bruker Corp.

www.bruker.com

Piping Design Platform Has a Visual Workspace



The HYDROFLO 3 piping system design software models pumped, gravity, and recirculating flow systems to solve for steady-state flows and pressures. The newest offering expands system capacities, provides additional editing features, and improves analysis results and pump-curve plotting. A

unique vertical-hydraulic grade-line workspace allows designers to observe component elevations and residual pressure heads. Users can drop hydraulic elements — such as pipes, pumps, fittings, valves, control valves, tanks, supply points, and gages — onto the workspace and build systems that model existing or proposed pipelines. The Group Editor tool enables a large number of components to be edited with a single command. Statistics help users to gauge a solution's accuracy and convergence stability. The software is equipped with numerous example problems that illustrate conveyance design concepts and serve as design templates.

Tahoe Design Software

www.tahoesoftware.com

Modeling Platform Adds Reliability Analysis Functionality

SystemModeler 4.1 is a modeling and simulation platform for cyber-physical systems that integrates Mathematica's complete suite for reliability analysis. This version boasts additions and improvements to over 24 applications and enhancements to connectivity, system reliability, and documentation. Reliability analysis of system models can be carried out using reliability diagrams, fault trees, and parametric lifetime distributions. Users can import tools from Simulink, Flowmaster, and IBM Rational Rhapsody, as well as exchange models without exposing intellectual property.

Wolfram

www.wolfram.com

Design Software Enables Seamless Communication

PV Elite 2015 is a complete software package for vessel and heat exchanger design, analysis, and evaluation. It includes a new 3D PDF modeler, CodeCalc improvements, and pressure vessel code and calculation

updates. The latest release also adds configuration options, improved analysis capabilities, and productivity enhancements. Built-in equations help users meet inspection requirements, and graphical inputs make it easy to create, update, and manipulate models. Bidirectional links to CADWorx Plant Professional and PV Fabricator enable information sharing. The 3D PDF modeler allows for easy sharing and dynamic visual representations of vessels, as well as enhanced output presentations. This allows project members to easily view results and make comments and changes. Design and engineering teams can use this software to share relevant information seamlessly, thereby maintaining accuracy and improving efficiency.

Intergraph

www.intergraph.com

Mobile App Aids Valve Sizing



This manufacturer of fluid automation, flow control, and pneumatic equipment has released a free mobile application for iPhones and Android devices. The app features the Flow Calculator, which enables users to quickly calculate flow for a valve or determine the flow coefficient needed to properly size a valve. The Fluid Guide feature compiles reference information on the types of valves available for common corrosive and noncorrosive gases and liquids. The Where-to-Buy distributor locator provides information on domestic and international distributors.

ASCO Numatics

www.asconumatics.com