

**EQUIPMENT**

**HEAT EXCHANGERS**



◀ Liquid Cooled

Air Cooled ▶

**FOR GASES & LIQUIDS!**

Talk Directly with Design Engineers!  
Blower Cooling Vent Condensing

INDUSTRIAL HEAT EXCHANGERS  
**XCHANGER**

(952) 933-2559 info@xchanger.com

**AARON** equipment company

**We Buy Equipment!**  
We Are "Sniffing Out"  
Quality Process Equipment



- > Ribbon Blenders
- > Double Cone Dryers
- > Twin Shell Blenders
- > Paddle Mixers
- > Turbulizers
- > Tanks, Silos, Reactors
- > Screeners and more...

Tell Us What You Have For Sale  
[www.aaronequipment.com/sniff](http://www.aaronequipment.com/sniff)  
or call: **855-791-5109**

**DISPLAY, CLASSIFIED AND WEB ADVERTISING**

**Nathan Lott**  
Global Sales Manager,  
Recruitment, Advertising and DIPPR

120 Wall Street,  
New York, NY 10005

Tel: 646-495-1361  
Email: nathl@aiche.org

**Build your Process Safety Knowledge  
with CCPS Courses from AIChE Academy**

**Upcoming CCPS Public Courses**

- Process Safety Boot Camp  
June 1-4, 2015 • Chicago, IL
- HAZOP Studies/Advanced PHA Concepts Combo Course  
June 8-12, 2015 • Chicago, IL
- Process Safety Boot Camp  
October 4-7, 2015 • Seattle, WA
- Process Safety Boot Camp  
October 25-28, 2015 • Houston, TX
- HAZOP Studies/Advanced PHA Concepts Combo Course  
December 7-11, 2015 • New York, NY



**Always-available CCPS eLearning Courses**

- 20 Elements of Risk Based Process Safety (RBPS)
- Hazard Identification for Operators and Maintenance Workers
- Process Safety Leadership for Front-Line Supervisors
- Process Safety Management Overview



Learn more and register at [www.aiche.org/academy](http://www.aiche.org/academy).



© 2015 AIChE 1261\_15 • 83.15

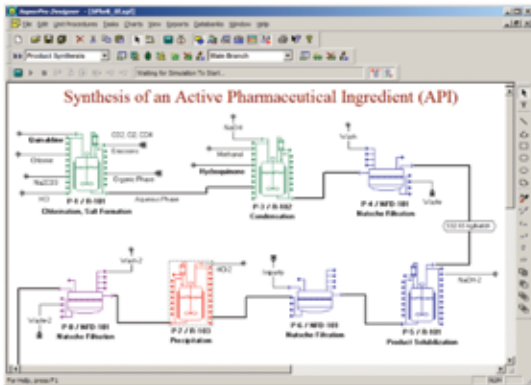
**ADVERTISERS' INDEX**

Aaron Equipment Company <a href="http://www.aaronequipment.com/sniff">www.aaronequipment.com/sniff</a>	60	Operational Sustainability <a href="http://www.os-orm.com">www.os-orm.com</a>	59
ACHEMA 2015 <a href="http://www.achema.de">www.achema.de</a>	39	OriginLab <a href="http://www.originlab.com">www.originlab.com</a>	11
Aon Affinity <a href="http://www.aicheinsurance.com">www.aicheinsurance.com</a>	IBC	ProSim <a href="http://www.prosim.net">www.prosim.net</a>	13
Comsol <a href="http://www.comsol.com">www.comsol.com</a>	59, BC	RedGuard <a href="http://www.redguard.com">www.redguard.com</a>	IFC
Intelligen <a href="http://www.intelligen.com">www.intelligen.com</a>	61	TLV Corporation <a href="http://www.tlv.com">www.tlv.com</a>	2
Master Bond <a href="http://www.masterbond.com">www.masterbond.com</a>	59	Xchanger <a href="http://www.xchanger.com">www.xchanger.com</a>	60
Offshore Technology Conference <a href="http://2015.otcnet.org">2015.otcnet.org</a>	59	Zeeco <a href="http://www.zeeco.com">www.zeeco.com</a>	7

# Intelligen Suite®

The Market-Leading Engineering Suite for Modeling, Evaluation, Scheduling, and Debottlenecking of Multi-Product Facilities

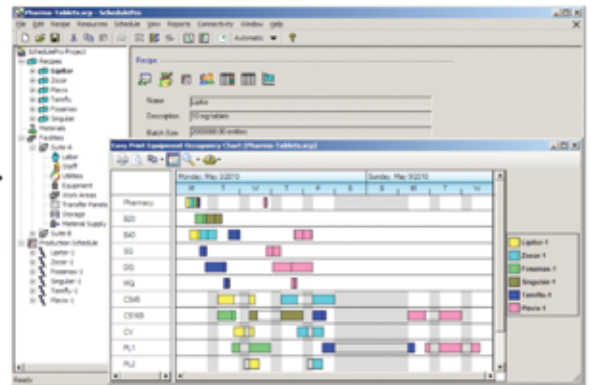
## SuperPro®



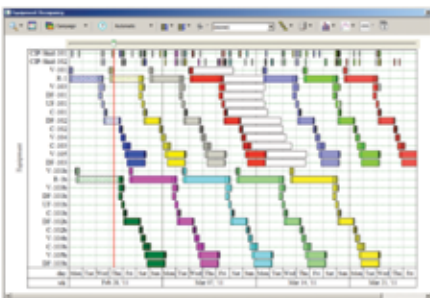
Use SuperPro Designer to model, evaluate, and optimize batch and continuous processes



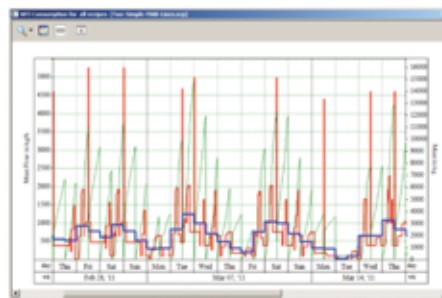
## SchedulePro®



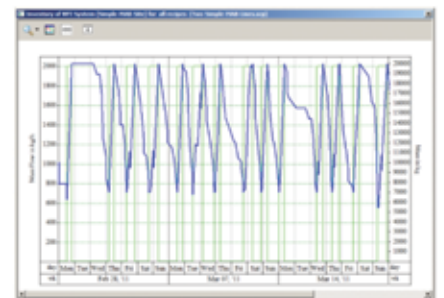
Migrate to SchedulePro to model, schedule, and debottleneck multi-product facilities



Easy production tracking, conflict resolution and rescheduling



Tracking demand for resources (e.g., labor, materials, utilities, etc.)



Managing inventories for input, intermediate, and output materials

**SuperPro Designer** is a comprehensive process simulator that facilitates modeling, cost analysis, debottlenecking, cycle time reduction, and environmental impact assessment of integrated biochemical, bio-fuel, fine chemical, pharmaceutical (bulk & fine), food, consumer product, mineral processing, water purification, wastewater treatment, and related processes. Its development was initiated at the Massachusetts Institute of Technology (MIT). SuperPro is already in use at more than 500 companies and 900 universities around the globe (including 18 of the top 20 pharmaceutical companies and 9 of the top 10 biopharmaceutical companies).

**SchedulePro** is a versatile production planning, scheduling, and resource management tool. It generates feasible production schedules for multi-product facilities that do not violate constraints related to the limited availability of equipment, labor, utilities, and inventories of materials. It can be used in conjunction with SuperPro (by importing its recipes) or independently (by creating recipes directly in SchedulePro). Any industry that manufactures multiple products by sharing production lines and resources can benefit from the use of SchedulePro. Engineering companies use it as a modeling tool to size shared utilities, determine equipment requirements, reduce cycle times, and debottleneck facilities.

*Visit our website to download detailed product literature and functional evaluation versions of our tools*

**INTELLIGEN, INC. • 2326 Morse Avenue • Scotch Plains, NJ 07076 • USA**

**Tel: (908) 654-0088 • Fax: (908) 654-3866**

**Email: [info@intelligen.com](mailto:info@intelligen.com) • Website: [www.intelligen.com](http://www.intelligen.com)**

**Intelligen also has offices in Europe and representatives in countries around the world**