

## EQUIPMENT

# BOILERS

Available Immediately



Lease • Rental • Sale  
**800.446.3325**

250,000-850 PSI / 750 Deg. F.	Trailer Mounted
250,000-750 PSI / 750 Deg. F.	80K-395 PSI
180,000-750 PSI / 750 Deg. F.	72K-350 PSI
165,000-1025 PSI / 850 Deg. F.	70K-350 PSI
165,000-350 PSI	60K-750 PSI
150,000-750 PSI / 750 Deg. F.	45K-750 PSI
135,000-750 PSI / 750 Deg. F.	40K-350 PSI
120,000-350 PSI	36K-300 PSI
120,000-725 PSI / 750 Deg. F.	30K-300 PSI
110,000-350 PSI	24K-300 PSI
90,000-395 PSI	
75,000-750 PSI / 750 Deg. F.	
75,000-395 PSI	
70,000-350 PSI	
60,000-750 PSI / 750 Deg. F.	
50,000-350 PSI	
40,000-750 PSI	
40,000-350 PSI	
30,000-350 PSI	
20,000-1600 PSI	
10-1,000 HP - 15-250 PSI	

**24HR** Emergency Service

## INDECK

Ready for Emergencies

Indeck Power Equipment Company  
847.541.8300  
info@indeck-power.com  
www.indeck.com

# HEAT EXCHANGERS



← Liquid Cooled

Air Cooled →

**FOR GASES & LIQUIDS!**

Talk Directly with Design Engineers!  
Blower Cooling Vent Condensing

INDUSTRIAL HEAT EXCHANGERS  
**XCHANGER**

(952) 933-2559 info@xchanger.com

## Looking To Advertise?

To be included in  
CEP Marketplace  
or CEP Showcase

**CONTACT:**  
**Nathan Lott**  
**646-495-1361**  
**nathl@aiche.org**



## The classes you need.

### Any time and place you want.

Add the skills you need with self-paced online courses in the AIChE eLearning Center.

- CCPS' Process Safety Management Overview
- Spreadsheet Problem Solving for Chemical Engineers
- Distillation in Practice
- Chemical Engineering for Non-Chemical Engineers
- And 20 more.

[www.aiche.org/elearning](http://www.aiche.org/elearning)

© 2014 AIChE 7675 • 11.14

# WISE

Washington Internships for Students of Engineering

**2015 SUMMER POSITION FOR AN ENGINEERING FACULTY MEMBER with INTEREST & EXPERIENCE IN PUBLIC POLICY OR A SCIENCE & TECHNOLOGY PUBLIC POLICY PROFESSIONAL**

An outstanding faculty member or policy professional (Faculty-Member-in Residence) is needed to mentor and teach engineering students about the interaction between S&T and policymaking during the 2015 WISE Program in Washington, DC.

WISE is a 9-week summer program (May 31 – August 1, 2015) during which 12-15 undergraduate engineering students work under an FMR's guidance and their sponsoring societies, to learn how legislative & regulatory policy decisions are made, and how engineers can contribute to the process. WISE interns interact with Washington decision-makers, and prepare and orally present an extensive research paper at the end of the program. For more information, visit the WISE web page at [www.wise-intern.org](http://www.wise-intern.org).

The WISE FMR will:

- Instruct WISE Interns on the basics of good policy research, writing, and analysis.
- Organize regular visits and discussion sessions with policy decision-makers.
- Supervise students' preparation of a substantial policy paper.
- Be a professional advisor and mentor to the WISE interns.
- Interact with representatives and staff of the engineering societies that sponsor WISE Interns.

Applications will be evaluated based on the following criteria:

- Experience and credentials.
- Knowledge of public policy, especially at the federal level.
- Experience dealing with students and publication of policy papers.

To apply, please send a letter of interest, current vita or resume, and two letters of recommendation addressing the above criteria, to:

WISE FMR c/o Melissa Carl  
1828 L Street, N.W., Suite 810  
Washington, DC 20036  
carlm@asme.org

The FMR receives a stipend of \$15,000. Housing is not included.

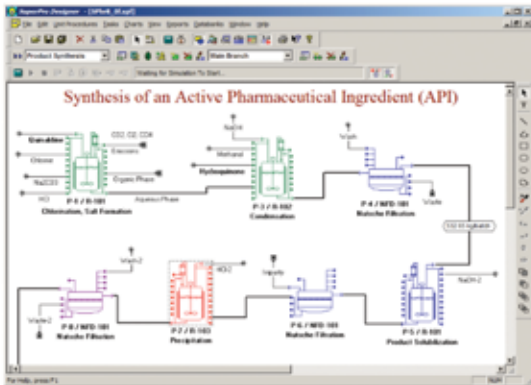
For more information contact  
Melissa Carl (CarlM@asme.org) or  
Erica Wissolik (e.wissolik@ieee.org).

**\*\*\* Applications due 31 December 2014 \*\*\***

# Intelligen Suite®

The Market-Leading Engineering Suite for Modeling, Evaluation, Scheduling, and Debottlenecking of Multi-Product Facilities

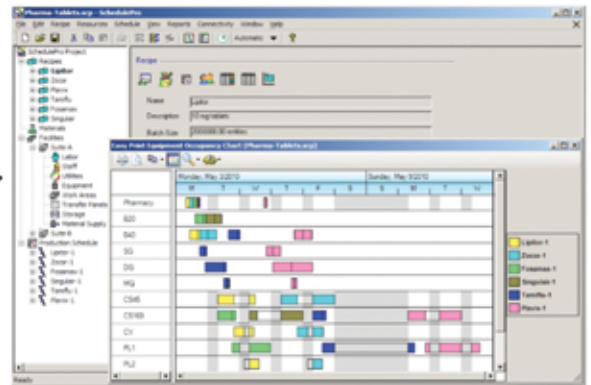
## SuperPro®



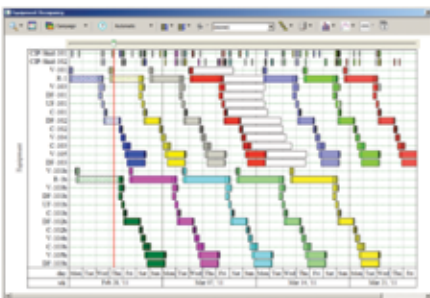
Use SuperPro Designer to model, evaluate, and optimize batch and continuous processes



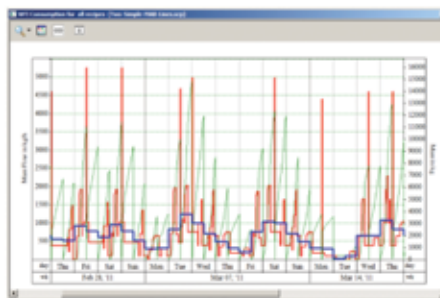
## SchedulePro®



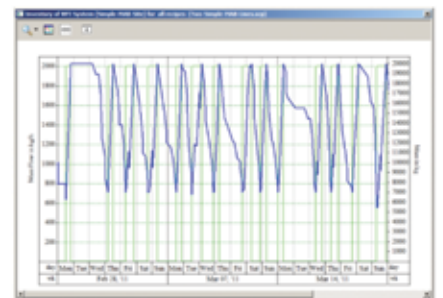
Migrate to SchedulePro to model, schedule, and debottleneck multi-product facilities



Easy production tracking, conflict resolution and rescheduling



Tracking demand for resources (e.g., labor, materials, utilities, etc.)



Managing inventories for input, intermediate, and output materials

**SuperPro Designer** is a comprehensive process simulator that facilitates modeling, cost analysis, debottlenecking, cycle time reduction, and environmental impact assessment of integrated biochemical, bio-fuel, fine chemical, pharmaceutical (bulk & fine), food, consumer product, mineral processing, water purification, wastewater treatment, and related processes. Its development was initiated at the Massachusetts Institute of Technology (MIT). SuperPro is already in use at more than 500 companies and 900 universities around the globe (including 18 of the top 20 pharmaceutical companies and 9 of the top 10 biopharmaceutical companies).

**SchedulePro** is a versatile production planning, scheduling, and resource management tool. It generates feasible production schedules for multi-product facilities that do not violate constraints related to the limited availability of equipment, labor, utilities, and inventories of materials. It can be used in conjunction with SuperPro (by importing its recipes) or independently (by creating recipes directly in SchedulePro). Any industry that manufactures multiple products by sharing production lines and resources can benefit from the use of SchedulePro. Engineering companies use it as a modeling tool to size shared utilities, determine equipment requirements, reduce cycle times, and debottleneck facilities.

*Visit our website to download detailed product literature and functional evaluation versions of our tools*

**INTELLIGEN, INC. • 2326 Morse Avenue • Scotch Plains, NJ 07076 • USA**

**Tel: (908) 654-0088 • Fax: (908) 654-3866**

**Email: [info@intelligen.com](mailto:info@intelligen.com) • Website: [www.intelligen.com](http://www.intelligen.com)**

**Intelligen also has offices in Europe and representatives in countries around the world**