

EQUIPMENT

BOILERS

Available Immediately



Lease • Rental • Sale
800.446.3325

250,000-850 PSI / 750 Deg. F.	Trailer Mounted
250,000-750 PSI / 750 Deg. F.	80K-395 PSI
180,000-750 PSI / 750 Deg. F.	72K-350 PSI
165,000-1025 PSI / 850 Deg. F.	70K-350 PSI
165,000-350 PSI	60K-750 PSI
150,000-750 PSI / 750 Deg. F.	45K-750 PSI
135,000-750 PSI / 750 Deg. F.	40K-350 PSI
120,000-350 PSI	36K-300 PSI
120,000-725 PSI / 750 Deg. F.	30K-300 PSI
110,000-350 PSI	24K-300 PSI
90,000-395 PSI	
75,000-750 PSI / 750 Deg. F.	
75,000-395 PSI	
70,000-350 PSI	
60,000-750 PSI / 750 Deg. F.	
50,000-350 PSI	
40,000-750 PSI	
40,000-350 PSI	
30,000-350 PSI	
20,000-1600 PSI	
10-1,000 HP - 15-250 PSI	



INDECK
Ready for Emergencies

Indeck Power Equipment Company
847.541.8300
info@indeck-power.com
www.indeck.com

HEAT EXCHANGERS



FOR GASES & LIQUIDS!

Talk Directly with Design Engineers!
Blower Cooling Vent Condensing

INDUSTRIAL HEAT EXCHANGERS
XCHANGER
(952) 933-2559 info@xchanger.com

AIChE Fall 2014 Virtual Career Fair

Wednesday, November 5, 12-3 pm EST
(Special Student Hour: 3-4 pm EST)

Recruitment packages include:

- Fully-branded and customized online booth, including the ability to display open positions, videos, benefits information and more
- an account for up to 2 recruiters, with options for more
- promotion of your company through email blasts
- dedicated, personalized account support

Virtual Booths: \$995; Sponsorships, \$1,495 – 2,495. Maximize your investment and reach with a sponsorship.

Contact sales@aiche.org

AIChE Is Looking for an Associate Editor for Environmental Progress & Sustainable Energy

Environmental Progress & Sustainable Energy (EP&SE), an official publication of the American Institute of Chemical Engineers (AIChE), in cooperation with its Environmental Division, and published on AIChE's behalf by John Wiley & Sons, is seeking candidates for Associate Editor, Sustainable Energy.

Dedicated to furthering clean and sustainable industrial practices, *EP&SE* covers a broad spectrum of state-of-the-art technologies for pollution prevention, emission control and waste treatment, environmental regulations and compliance, environmental software and book reviews, sustainability and more. For more than 30 years, environmental engineers, professionals and managers have relied on the journal as a premier source of information on environmental developments, case histories, and troubleshooting tips.

The successful candidate for *EP&SE* Associate Editor for Sustainable Energy, should be able to commit to a five-year term with an option for a second-term renewal. He/she will work with Martin Abraham, the current Editor, and with Isabel Escobar, the current Associate Editor, Environment, to pursue growth strategies, to enhance the impact factor, and to improve the turnaround time for submitted articles. The Associate Editor, Sustainable Energy, will enhance contributions in alternate energy technologies, biofuels, CO₂ capture and sequestration, energy efficiency and sustainable biorefineries, working to promote the quality of submissions and enhancing the value for readers. This non-staff position comes with a stipend from AIChE.

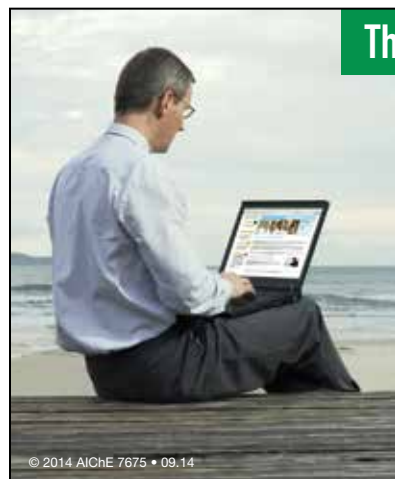
The successful candidate should:

- Have extensive experience and a solid reputation in the sustainable energy field
- Be strongly committed to serving the environmental and chemical engineering community through *EP&SE*
- Have impeccable ethical standards
- Demonstrate independence, while working within an established system
- Be able to appreciate the importance of applied chemical engineering to the growth of the profession.

If you are interested in applying for this position, please send an email to the *EP&SE* Editor, with a statement describing your qualifications for the position, a brief resume, and a list of three references.

Martin Abraham
Editor, *Environmental Progress & Sustainable Energy*
EnviroProgress@ysu.edu

**Applications should be received by
October 15, 2014**



The classes you need.

Any time and place you want.

Add the skills you need with self-paced online courses in the AIChE eLearning Center.

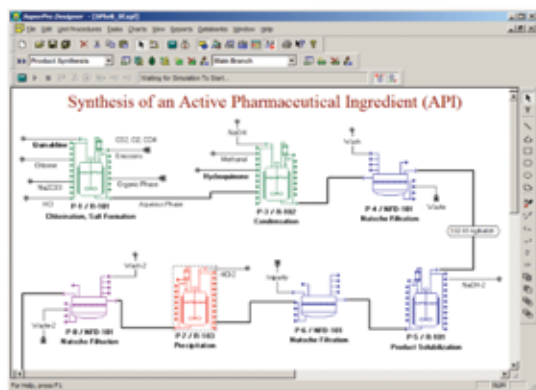
- CCPS' Process Safety Management Overview
- Spreadsheet Problem Solving for Chemical Engineers
- Distillation in Practice
- Chemical Engineering for Non-ChemEs
- And 16 more.

www.aiche.org/elearning

Intelligen Suite®

The Market-Leading Engineering Suite for Modeling, Evaluation, Scheduling, and Debottlenecking of Multi-Product Facilities

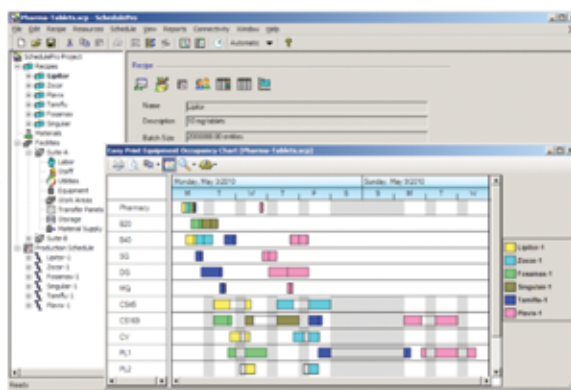
SuperPro®



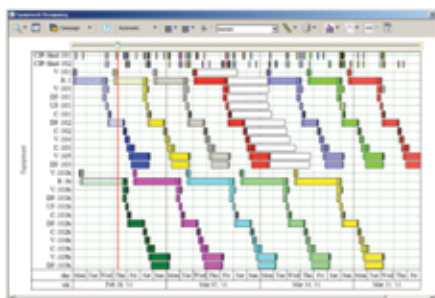
Use SuperPro Designer to model, evaluate, and optimize batch and continuous processes



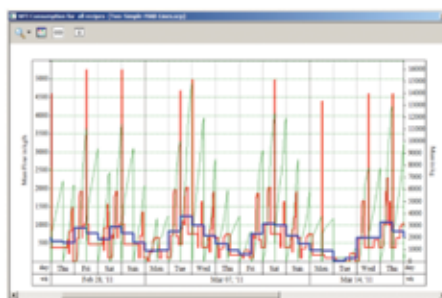
SchedulePro®



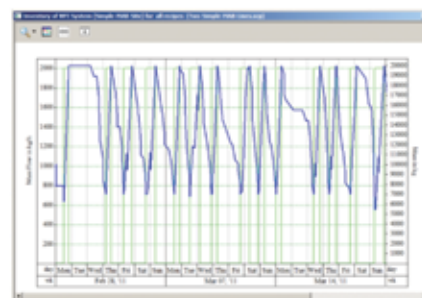
Migrate to SchedulePro to model, schedule, and debottleneck multi-product facilities



Easy production tracking, conflict resolution and rescheduling



Tracking demand for resources (e.g., labor, materials, utilities, etc.)



Managing inventories for input, intermediate, and output materials

SuperPro Designer is a comprehensive process simulator that facilitates modeling, cost analysis, debottlenecking, cycle time reduction, and environmental impact assessment of integrated biochemical, bio-fuel, fine chemical, pharmaceutical (bulk & fine), food, consumer product, mineral processing, water purification, wastewater treatment, and related processes. Its development was initiated at the Massachusetts Institute of Technology (MIT). SuperPro is already in use at more than 500 companies and 900 universities around the globe (including 18 of the top 20 pharmaceutical companies and 9 of the top 10 biopharmaceutical companies).

SchedulePro is a versatile production planning, scheduling, and resource management tool. It generates feasible production schedules for multi-product facilities that do not violate constraints related to the limited availability of equipment, labor, utilities, and inventories of materials. It can be used in conjunction with SuperPro (by importing its recipes) or independently (by creating recipes directly in SchedulePro). Any industry that manufactures multiple products by sharing production lines and resources can benefit from the use of SchedulePro. Engineering companies use it as a modeling tool to size shared utilities, determine equipment requirements, reduce cycle times, and debottleneck facilities.

Visit our website to download detailed product literature and functional evaluation versions of our tools

INTELLIGEN, INC. • 2326 Morse Avenue • Scotch Plains, NJ 07076 • USA

Tel: (908) 654-0088 • Fax: (908) 654-3866

Email: info@intelligen.com • Website: www.intelligen.com

Intelligen also has offices in Europe and representatives in countries around the world