



What's New

SOLIDS AND FLUIDS HANDLING

Silicone Tubing Carries USP Class VI Approval



Known as APSPG, this tubing is specially formulated to withstand the repeated compression and release actions of peristaltic pumps. The addition of a new size — with a 0.313-in. inner dia. and a 0.5-in. outer dia. —

brings the number of sizes stocked to eleven. The USP Class VI endorsement assures users of the product's purity for fluid transfer in critical applications. The tubing is constructed of low-volatile-grade silicone material that is platinum cured, certified free of animal-derived ingredients, and meets FDA 21 CFR 177.2600. APSPG is manufactured and packaged in Class 7 ISO-certified cleanrooms. It has a wide operating temperature range of -100°F to 400°F and a Shore A hardness of 50, and it can be sterilized with either gamma irradiation or autoclaving. It is flexible, resilient, and translucent, and imparts no odors or tastes to transferred fluids.

NewAge Industries
www.newageindustries.com

Non-Drip Couplings Feature Modular Styling



These non-drip couplings are designed for use in low-pressure and vacuum applications. The product range is suitable for connecting fluid lines as diverse as beverage, electronic coolant, salt water, and oil transfer lines. The coupling's non-drip construction ensures virtually zero spillage and

INNOVATION



PROFLUX™
severe service
grid packing

YOU CAN RELY ON US.™

The new choice for fouling in packing applications

The efficiency benefit of structured packaging and the robustness and fouling resistance of grid packing that outperforms both in severe service applications.

KOCH-GLITSCH™

United States (316) 828-5110 | Canada (905) 852-3381 | Italy +39 035 2273411 | Asia +65-6831-6500

www.koch-glitsch.com

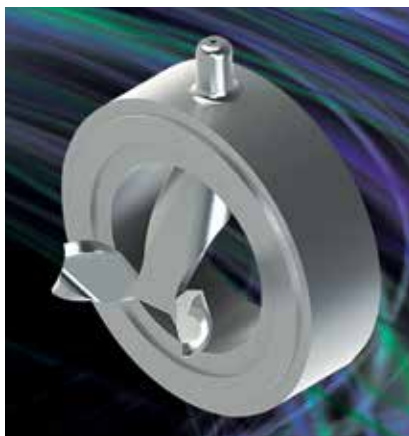
K KOCH-GLITSCH is a trademark of Koch-Glitsch, LP and is registered in the U.S. and various other countries. PROFLUX and YOU CAN RELY ON US are trademarks of Koch-Glitsch, LP. PROFLUX™ technology is protected by patent in the U.S.; other patents pending.

eliminates pollution and air inclusion during connection and disconnection. Modular styling ensures standardized dimensions with a common interface, so that the couplings can be placed into a wide range of configurations. The couplings are adaptable to most applications and system requirements with almost unlimited combination possibilities by varying seals, threads, or other product features. They are available in nickel-plated brass with nitrile seals and in Type 316 stainless steel with Viton seals. They are offered in three safety levels: standard; color coding; and key coding, in which couplings and nipples have a noninterchangeable key feature that prevents cross-connection.

CEJN Industrial Corp.

www.cejn.us

Static Mixer is Designed for Turbulent Flow




The Kenics UltraTab static mixer is suitable for applications in which a high degree of mixing is required in a compact space. It has an integral wall injector upstream of the mixing element that forces flow stream additives through the high-energy dissipation region created by the mixing element. Low pressure drop through the mixer enhances process energy efficiency and saves pump energy. A compact

design and short mixing length optimize plant efficiency. The mixer can have national pipe thread (NPT) taper or flanged injectors, and can be con-

structed of carbon steel, stainless steel, coated carbon, or high-alloy metals.

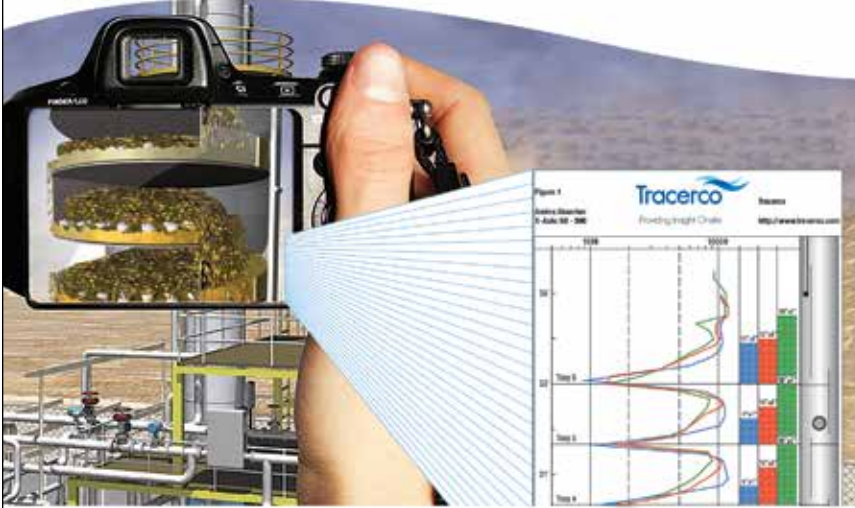
Chemineer, Inc.

www.chemineer.com



Providing Insight Onsite


Onsite Tray Capacity Diagnostics Using TRACERCO FrothView™ Technology



A new dimension to tower scanning tray analysis

Patent pending TRACERCO FrothView™ technology is now being used to measure capacity of trays in separation towers. A combination of field data gathering improvements together with sophisticated density profile analysis allows instant reporting of tray froth height, expressed as % tray space. Extensive pilot plant studies have verified that TRACERCO FrothView™ corresponds well to the % flood of an operating tray. To learn more about our unique tray analysis contact a technical advisor in your area to schedule a presentation.

NA Corporate Headquarters:
4106 New West Drive
Pasadena, TX 77507 USA
Tel: 281 291 7769
Email: tracerco@tracerco.com



www.tracerco.com