



# Software & Information Technology

## Online Tools Optimize Chromatography Methods



Many chromatographers are considering moving their current high-performance liquid chromatography (HPLC) methods to new column geometries with different particle sizes to improve speed, resolution, and/or sensitivity. The HPLC Method Development Calculator reduces the time needed to experimentally determine the most favorable analysis conditions by providing users with quick and simple access to the knowledge of the company's chromatography experts. The interactive collection of online tools allows the user to calculate initial conditions for both gradient and isocratic methods. A liquid chromatography column selection tool aids in choosing an appropriate column for any application. The online tools are part of the Thermo Scientific Chromatography Resource Center. **Thermo Fisher Scientific**  
[www.thermoscientific.com/crc](http://www.thermoscientific.com/crc)

## Update Reduces Control Chart False Alarms

The Minitab 16.2 statistical software update incorporates diagnostic tools and Laney P' and U' control charts to minimize false alarms due to too much or too little fluctuation in processes with natural variation. P and U charts are used to monitor defectives and defects, respectively. Unlike traditional P and U charts, Laney P' and U' charts assume that no process exhibits a constant defective or defect rate. As a result, these charts distinguish between common-cause and special-

cause variation, thereby indicating whether a process is truly in or out of control. The P Chart and U Chart Diagnostic tools test the process data for overdispersion or underdispersion, respectively, and recommend whether traditional P and U charts or Laney P' and U' charts are more appropriate.

**Minitab Inc.**

[www.minitab.com](http://www.minitab.com)

## Integration Software Offers Industrial Functionality

As the core platform inside the company's InFusion Enterprise Control System, ArchestrA System Platform 2012 and ArchestrA Workflow 2012 offer a broad range of automation and information functionality. ArchestrA System Platform presents a single, scalable, and open platform for the entire spectrum of industrial automation applications. It displays a logical representation of physical processes being controlled, and supports disaster recovery implementations using Windows Server Hyper-V virtualization. The platform also supports remote desktop services through Windows Server 2008 R2. Tighter integration allows customers to unite existing automation and IT systems with a variety of applications from Invensys and other third-party providers. ArchestrA Workflow enables users to model, execute, and analyze operational workflows to drive process consistency.

**Invensys Operations Management**

[www.invensys.com](http://www.invensys.com)

## Process Control Suite Monitors Automation Systems

Unlike other process control software, this vendor-neutral suite allows for the control of both Honeywell and non-Honeywell control systems. It can monitor a variety of advanced process control (APC) technologies across multiple facilities, thereby providing a more complete view of plant opera-

tions. Studies have shown that it can increase service factor and application utilization by 25% and reduce troubleshooting time by up to 50%. Suitable for a variety of industrial applications, the software suite includes three products: Honeywell Loop Scout, which allows for recognition and rectification of poorly performing control loops; Honeywell Profit Expert, which delivers multivariable controller monitoring for the Honeywell Profit Controller; and Control Performance Monitor, which monitors, identifies, analyzes, and resolves regulatory and APC asset issues.

**Honeywell International**

[www.honeywellprocess.com](http://www.honeywellprocess.com)

## Simulator Simplifies Process Change with "What-If" Analysis

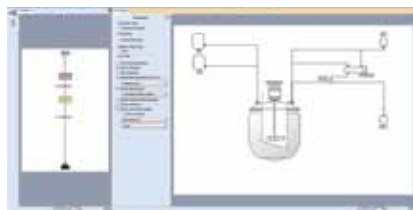


The potential impacts of business decisions can now be effectively analyzed with the Arena simulation software Version 14.0. This software allows users to visualize process changes before they are made, which minimizes the associated risk and promotes faster change implementation. Arena includes a visual designer tool that can be used to build realistic 3D animations and import content from popular 3D modeling programs, such as Google SketchUp, AutoDesk, and Blender. It also features a drag-and-drop interface for the creation of dynamic graphic dashboards. Arena is designed to run on the Microsoft .NET framework.

**Rockwell Automation**

[www.rockwellautomation.com](http://www.rockwellautomation.com)

### Modeling Tool Simulates Batch Reactors

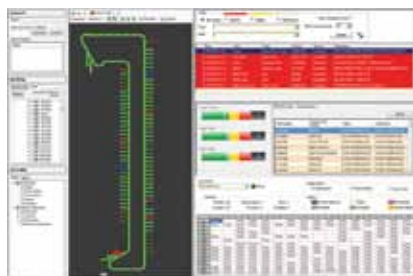


BatchReactor combines equipment modeling, reaction engineering, and advanced numerical methods to simulate batch chemical reactors. It enables engineers to test alternative synthesis routes and new production strategies in lab and pilot plant experiments, and its graphical user interface allows easy visualization of operating steps and procedures. The user has access to a complete set of thermodynamic properties and models through the Simulis Thermodynamics calculation server. BatchReactor includes a kinetic fitting tool for the identification of kinetic parameters and the heat of reaction from experimental data.

**ProSim, Inc.**

[www.prosim.net](http://www.prosim.net)

### Sortation Software Advances Warehouse Control



Part of the InControlWare software suite, ShipSort and PackSort manage high-speed tilt-tray and cross-belt sortation systems. This software suite eliminates the challenge of integrating applications from multiple equipment suppliers. ShipSort features intelligent item routing, induction and chute management, multiple chute selection strategies, and configurable exception

processing. PackSort offers inbound and outbound queue management, item allocation to orders, directed pack-out operations, and inventory and item management. With numerous order fulfillment applications, the

PackSort sortation system is ideal for multipurpose distribution centers. Both products integrate with other software within the InControlWare suite.

**Intelligrated**

[www.intelligrated.com](http://www.intelligrated.com)

## RoCoat™ Finally, a Breakthrough in Pipeline Abrasion and Corrosion Protection

Field proven in  
tailings lines for  
conveyance of  
rock sizes up to  
5" diameter.

With today's 4000 miles of slurry and tailings pipelines, and with the expected doubling of global mileage within the next 8 years, RoCoat finally offers a way to drastically extend pipe lifetime.

#### Characteristics

- Extreme abrasion resistance, increasing lifetime by up to factor 10
- High adhesion, corrosion prevention, hydrolytic resistance and barrier function
- No coating disbondment, blistering or liner collapse
- Patented field joint process allows for simple 1-weld-per-joint
- No decrease in flow efficiency
- Pressure resistance up to 250 bar

Now available from 4" to 56" diameter pipe

[www.roplast.de](http://www.roplast.de)

Visit us at the Tube 2012 (hall 6, stand G28).

**ROPLAST**  
INTELLIGENT PLASTIC SOLUTIONS

