

## Dynatrol®

www.DynatrolUSA.com  
Toll free 800.231.2062 Phone 713.869.0361 Fax 713.869.7332

Designed to monitor high, intermediate or low point-level detection on dry bulk solids as well as liquids or slurries, the **Dynatrol®** Level Detectors are available in corrosion-resistant coatings. The compact, rugged detectors are built in the USA and are solidly constructed for a long operating life. They have no moving parts, require no adjustments and are virtually wear-free – delivering a worry-free solution for your demanding service conditions.

Request your copy of the latest **Dynatrol®** catalog - on CD!

Covers the complete **Dynatrol®** line of level switches & detectors, on-stream process analyzers, measurement & control instruments and a new line of accessories. Includes detailed drawings, wiring diagrams, and examples of proven uses.

Automation Products Inc  
3030 Maxroy St  
Houston TX 77008  
800 231-2062  
sales@dynatrolusa.com  
www.DynatrolUSA.com



www.aiche.org/cep or Circle No. 150 on p.59

## Proven Heavy-Industrial Mass Flow Meter for Chemical Industry



Sierra Instruments' Flat-Trak™ Model 780S In-line Mass Flow Meter with Flow Conditioning provides repeatable, rugged, and reliable performance. The Model 780S is designed for the most demanding industrial gas mass flow measurement applications. The meter's accuracy is  $\pm 1\%$  of reading  $+0.5\%$  full scale, and the flow range is up to 25,000 sfp (air) with standard accuracy. The Model 780S also features heavy-duty 316 stainless steel wetted materials, no moving parts and Sierra's patented Dry-Sense thermal sensor.

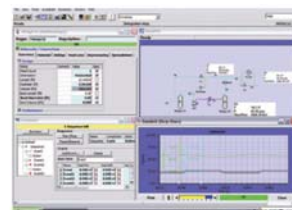
<http://sierrainstruments.com/products/780.html>



5 HARRIS COURT, BLDG L  
MONTEREY, CA 93940  
TOLL FREE: 800-866-0200  
PHONE: 831-373-0200  
FAX: 831-373-4402

www.aiche.org/cep or Circle No. 151 on p.59

## VMGSim™ Integrated Steady State and Dynamic Simulation.



Easily create process models of refining, chemical and oil/gas processing to troubleshoot, design or optimize your plant. Create steady state models, size and rate vessels, columns and heat exchangers. Add your control system to the model and click a button to run dynamically. Use the dynamic wizards to create and run dynamic depressuring and blowdown studies and model multistage compressors and antisurge control. Create custom unit operations and economic models embedded in your process model by dragging the Excel operation onto your PFD. Graphical User interface driven by embedded Visio. Completely Interactive, bidirectional simulation solver.

For more information  
visit our website at  
[www.virtualmaterials.com](http://www.virtualmaterials.com)



www.aiche.org/cep or Circle No. 152 on p.59

## CONFERENCE PROCEEDINGS

### 2009

AICHE Annual Meeting  
Nashville, TN • November 8-13

09AIChE  
Annual Meeting, Nashville, TN

The Proceedings of the 2009 AIChE Annual Meeting are now available in multiple formats. You may access content as e-downloads of individual papers or groups of papers by going to [www.aicheproceedings.org](http://www.aicheproceedings.org). The CD-ROM contains over 4,000 abstracts and almost 600 extended abstracts. Past proceedings are also available. You may also order by calling Omnipress at 1-800-828-0305 or 608-246-2600 (international callers).

www.aiche.org/cep or Circle No. 153 on p.59

## Free COMSOL Conference CD



COMSOL®, Inc. is now offering a free copy of the 2009 Edition of the COMSOL Conference CD. It is packed with over 275 presentations from our recent conferences in Boston and Hannover. Included are presentations with slides, papers, videos and more. Applications featured include microfluidics, electrochemistry, transport phenomena, reaction engineering, and many more.

Request your complimentary copy of the CD at [www.comsol.com](http://www.comsol.com). Tel: 781-273-3322



www.aiche.org/cep or Circle No. 154 on p.59



This compact sized control valve is designed for on-off service including gas separators, scrubbers, compressors and other high pressure oil and gas applications. Easy removal of the bonnet allows for access to the environmentally friendly live loaded packing. This simple bonnet removal also gives access to the NACE compatible stellite seat and plug designed for highly erosive services. Other standard design features include easy field selectable Cv values, a field reversible actuator and a low temperature design of -50 F.



Samson Controls Inc.  
Phone: (281) 383-3677  
Fax: (281) 383-3690  
Internet: [www.samson-usa.com](http://www.samson-usa.com)

www.aiche.org/cep or Circle No. 155 on p.59