

## EQUIPMENT

**FOR SALE / RENT**  
**24/7 EMERGENCY SERVICE**

**BOILERS**  
**20,000 - 400,000 #/Hr.**

**DIESEL & TURBINE GENERATORS**  
**50 - 25,000 KW**

**GEARS & TURBINES**  
**25 - 4000 HP**

WE STOCK LARGE INVENTORIES OF:

**Air Pre-Heaters • Economizers  
 Deaerators • Pumps • Motors  
 Fuel Oil Heating & Pump Sets  
 Valves • Tubes • Controls  
 Compressors • Pulverizers  
 Rental Boilers & Generators**

**WWW.WABASHPOWER.COM**  
**800-704-2002**

**wabash** Power Equipment Co.  
 444 Carpenter Avenue Wheeling, IL 60090

www.aiche.org/cep or Circle No. 201 on p.59

## CONSULTING

**CRYSTALLIZATION & PRECIPITATION**

**Dr. Wayne J. Genck** Genck International  
 3 Somonauk Court, Park Forest, IL 60466  
 Tel (708) 748-7200 Fax (708) 748-7208  
 genckintl@aol.com — <http://www.genckintl.com>

- Design/Scale-up
- Size Distribution
- Laboratory Investigations
- Filtration
- Troubleshooting
- Purity
- Caking
- Drying
- Particle Habit
- Product Micro-Analysis
- Polymorphism
- Kinetics Studies

◆ ◆ ◆ Industrial Seminars ◆ ◆ ◆

www.aiche.org/cep or Circle No. 205 on p.59

**ME MACHINERY & EQUIPMENT Co. Inc.**  
**Quality Used Equipment!**

We have over 5,000 pieces of used processing and packaging machinery available. A large portion of this equipment was used in the Chemical and Pharmaceutical Industries.

Please visit our website to view detailed descriptions and photos at:  
[www.machineryandequipment.com](http://www.machineryandequipment.com)

P.O. Box 7632 San Francisco, CA 94120 Toll Free: (800) 227-4544  
 Fax: (415) 467-2639 Phone: (415) 467-3400  
 Email: [info@machineryandequipment.com](mailto:info@machineryandequipment.com)

www.aiche.org/cep or Circle No. 202 on p.59

**PROCESS FILTRATION EQUIPMENT**

JWI Filter presses with polypro recessed plates  
 Sparkler & Niagara horizontal plate filters,  
 Model 33D17, 18S23, 1824S & 3348S  
 Stainless Steel ERTEL & STAR Filter presses  
 Nutsche filter, 10 gal, 316 SS, 35 psi  
 K-S Avery 35 cu. ft. membrane filter press, polypro plates  
 US Autojet, Pressure leaf, 400 sq. ft., stainless steel

**EVERY FILTER COMPANY**  
 (201) 666-9664 Fax (201) 666-3802  
 E-mail: [larry@averyfilter.com](mailto:larry@averyfilter.com)  
[www.averyfilter.com](http://www.averyfilter.com)

www.aiche.org/cep or Circle No. 203 on p.59

**HEAT EXCHANGERS**

**Liquid Cooled**

**Air Cooled**

**FOR GASES & LIQUIDS!**

Talk Directly with Design Engineers!  
 Blower Cooling Vent Condensing

**INDUSTRIAL HEAT EXCHANGERS**  
**XCHANGER**  
 (952) 933-2559 [info@xchanger.com](mailto:info@xchanger.com)

www.aiche.org/cep or Circle No. 204 on p.59

**BOILERS**  
**Available Immediately!**

**lease • rental • sale**

(3) New 250,000 PPH 750 PSI / 750 Deg. S.H. with Low NOx Burners  
 (2) New 250,000 PPH 850 PSI / 750 Deg. S.H. with Low NOx Burners

250,000-850 PSI / 750 Deg. F.	<b>TRAILER MOUNTED</b>
250,000-750 PSI / 750 Deg. F.	72K-350 PSI
180,000-750 PSI / 750 Deg. F.	70K-350 PSI
165,000-1025 PSI / 850 Deg. F.	70K-350 PSI
165,000-350 PSI	45K-750 PSI
150,000-750 PSI / 750 Deg. F.	40K-350 PSI
135,000-750 PSI / 750 Deg. F.	36K-300 PSI
120,000-350 PSI	30K-300 PSI
120,000-725 PSI / 750 Deg. F.	24K-300 PSI
70,000-350 PSI	
60,000-750 PSI / 750 Deg. F.	
50,000-350 PSI	
40,000-750 PSI	
40,000-350 PSI	
30,000-350 PSI	
20,000-1600 PSI	
10-1,000 HP / 15-250 PSI	

**EMERGENCY SERVICE 24HR EMERGENCY SERVICE**

**INDECK**  
 INDECK POWER EQUIPMENT COMPANY  
 tel 847.541.8300 / 800.446.3325  
 fax 847.541.9984  
[info@indeck-power.com](mailto:info@indeck-power.com)  
[www.indeck.com](http://www.indeck.com)

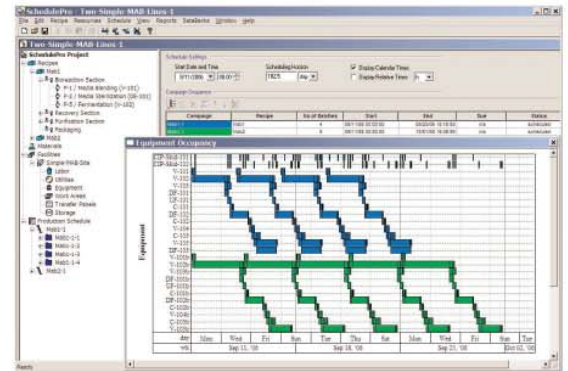
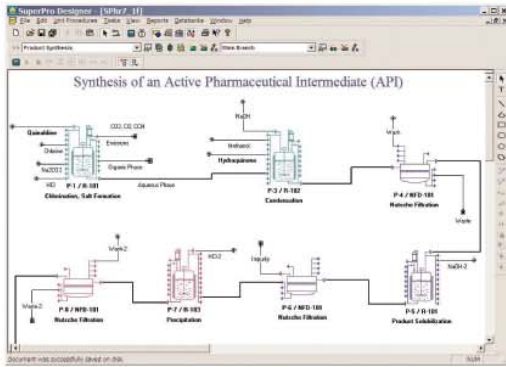
www.aiche.org/cep or Circle No. 206 on p.59

# Intelligen Suite

The Market-Leading Engineering Suite for Modeling, Evaluation, Scheduling, and Debottlenecking of Single & Multi-Product Facilities

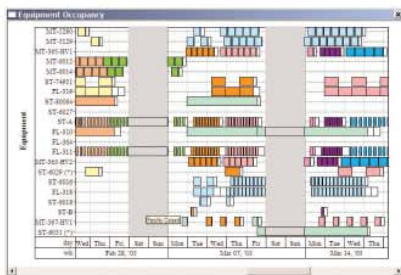
## SuperPro

## SchedulePro

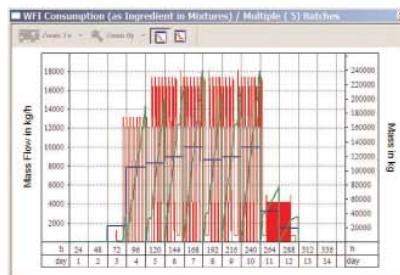


Use SuperPro Designer to model, evaluate, and debottleneck batch and continuous processes

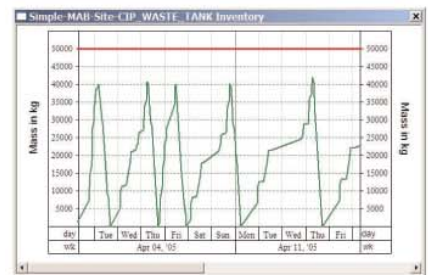
Switch to SchedulePro to schedule, model, and debottleneck multi-product facilities



Tracking of equipment occupancy in multi-product facilities



Tracking demand for resources (e.g., labor, materials, utilities, etc.)



Inventory tracking for raw materials, intermediates, products, and wastes

**SuperPro Designer** is a comprehensive process simulator that facilitates modeling, cost analysis, debottlenecking, cycle time reduction, and environmental impact assessment of biochemical, specialty chemical, pharmaceutical (bulk & fine), food, consumer product, mineral processing, water purification, wastewater treatment, and related processes. Its development was initiated at the Massachusetts Institute of Technology (MIT). SuperPro is already in use at more than 400 companies and 500 universities around the world (including 18 of the top 20 pharmaceutical companies and 9 of the top 10 biopharmaceutical companies).

**SchedulePro** is a versatile finite capacity scheduling tool that generates feasible production schedules for multi-product facilities that do not violate constraints related to the limited availability of facilities, equipment, resources and work areas. It can be used in conjunction with SuperPro (by importing its recipes) or independently (by creating recipes directly in SchedulePro). Any industry that manufactures multiple products by sharing production lines and resources can benefit from the use of SchedulePro. Engineering companies use it as a modeling tool to size utilities for batch plants, identify equipment requirements, reduce cycle times, and debottleneck facilities.

*Visit our website to download detailed product literature and functional evaluation versions of our tools*

**INTELLIGEN, INC.** • 2326 Morse Avenue • Scotch Plains, NJ 07076 • USA  
Tel: (908) 654-0088 • Fax: (908) 654-3866  
Email: [info@intelligen.com](mailto:info@intelligen.com) • Website: [www.intelligen.com](http://www.intelligen.com)  
*Intelligen also has offices in Europe and representatives in countries around the world*