


www.DynatrolUSA.com

Dynatrol®

Toll free 800.231.2062 Phone 713.869.0361 Fax 713.869.7332

Designed to monitor high, intermediate or low point-level detection on dry bulk solids as well as liquids or slurries, the **Dynatrol®** Level Detectors are available in corrosion-resistant coatings. The compact, rugged detectors are built in the USA and are solidly constructed for a long operating life. They have no moving parts, require no adjustments and are virtually wear-free – delivering a worry-free solution for your demanding service conditions.

Request your copy of the latest Dynatrol® catalog - on CD!



Covers the complete **Dynatrol®** line of level switches & detectors, on-stream process analyzers, measurement & control instruments and a new line of accessories. Includes detailed drawings, wiring diagrams, and examples of proven uses.

Automation Products Inc
3030 Maxroy St
Houston TX 77008
800 231-2062
sales@dynatrolusa.com
www.DynatrolUSA.com

www.aiche.org/cep or Circle No. 150 on p.59

Cutting-Edge Capital Project Management & Cost Control

A one-day seminar introducing cutting-edge capital project management and cost control techniques, techniques endorsed by the Project Management Institute (PMI) and the American Association of Cost Engineers (AACE), adapted to our industry. No note taking necessary. A take-home CD will contain files and spreadsheets which will cover all discussed and do the following:

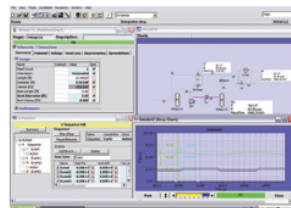
- (1) Project Scheduling:** Calculates project schedule, concept through startup, based on input project cost estimate (conceptual through detailed) and project type.
- (2) FCI given ROI:** Calculates the fixed capital investment that satisfies input project economic requirements.
- (3) Definition Rating & Earned Value:** Accurately predict final project cost at any point in the project. Identify overruns early enough to do something about them.
- (4) Project Plans:** for a small, medium, large, and very large project, accommodating any project, in accordance with the PMBOK, the ANSI standard on project management, written by the PMI, adapted to our industry.
- (5) Engineering Scopes of Work (SOW):** Get better, more economical engineering through hard money bids: Preliminary Engineering SOW, Detailed Engineering SOW, Design / Build SOW.

Cost: \$599 per person **Location:** Joliet, IL
Dates: 10/23/09, 11/20/09.

Information and Registration:
CP Project Services, inc. 708-425-2279
www.cpprojectservices.com

www.aiche.org/cep or Circle No. 151 on p.59

VMGSim™ Integrated Steady State and Dynamic Simulation.



Easily create process models of refining, chemical and oil/gas processing to troubleshoot, design or optimize your plant. Create steady state models, size and rate vessels, columns and heat exchangers. Add your control system to the model and click a button to run dynamically. Use the dynamic wizards to create and run dynamic depressing and blowdown studies and model multistage compressors and antisurge control. Create custom unit operations and economic models embedded in your process model by dragging the Excel operation onto your PFD. Graphical User interface driven by embedded Visio. Completely Interactive, bidirectional simulation solver.

For more information
visit our website at
www.virtualmaterials.com



www.aiche.org/cep or Circle No. 152 on p.59

09AICHE
Annual Meeting, Nashville, TN

Can You Afford Not to Be There?

Exhibit and Sponsorships Still Available

Nashville
Gaylord Opryland
November 8th-13th

The **program** features more than 700 sessions, including special ones on pharmaceutical "Quality by Design," energy, biotechnology, nanotechnology and sustainability.

Exhibitors are offered tabletops in a very-high-traffic area, while **sponsorship opportunities** include high-visibility receptions and special events, wireless service and keycards.

Contact:
Doris B. Deutsch
Global Display Sales Manager
Phone: 646-495-1361, Fax: 775-254-6963
Email: doris@aiiche.org

For details, visit:
<http://www.aiche.org/Conference/ExhibitSponsor/AnnualExhibitSponsor.aspx>

www.aiche.org/cep or Circle No. 153 on p.59

Free COMSOL Conference CD



COMSOL®, Inc. is now offering a free copy of the 2009 Edition of the COMSOL Conference CD. It is packed with over 275 presentations from our recent conferences in Boston and Hannover. Included are presentations with slides, papers, videos and more. Applications featured include microfluidics, electrochemistry, transport phenomena, reaction engineering, and many more.

Request your complimentary copy of the CD at
www.comsol.com. Tel: 781-273-3322



www.aiche.org/cep or Circle No. 154 on p.59

High Quality Plastic Process Piping Systems



- Custom Fabricated to suit a wide variety of Service Conditions.
- Available as Pre-Assembled Sections, or Loose Pipe & Fittings.
- Fabricated using FRP, or Armourplastics® (thermoplastic-lined FRP) Materials.

FABRICATED PLASTICS LIMITED

2175 Teston Road,
Maple (Toronto) Canada, L6A 1T3
Phone: (905) 832-8161
Fax: (905) 832-2111
e-mail info@fabricatedplastics.com
Website: www.fabricatedplastics.com

www.aiche.org/cep or Circle No. 155 on p.59