

FOR SALE / RENT

24/7 EMERGENCY SERVICE

BOILERS

20,000 - 400,000 #/Hr.

**DIESEL & TURBINE
GENERATORS**

50 - 25,000 KW

GEARS & TURBINES

25 - 4000 HP

**WE STOCK LARGE INVENTORIES
OF:**

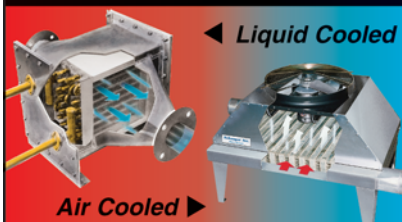
**Air Pre-Heaters • Economizers
Deaerators • Pumps • Motors
Fuel Oil Heating & Pump Sets
Valves • Tubes • Controls
Compressors • Pulverizers
Rental Boilers & Generators**

**WWW.WABASHPOWER.COM
800-704-2002**

wabash Power
Equipment Co.
444 Carpenter Avenue Wheeling, IL 60090

www.aiche.org/cep or Circle No. 200

HEAT EXCHANGERS



FOR GASES & LIQUIDS!

Talk Directly with Design Engineers!
Blower Cooling Vent Condensing

Xchanger

(952) 933-2559 Fax: (952) 933-5647
www.xchanger.com info@xchanger.com

www.aiche.org/cep or Circle No. 201

**EcReCon
Inc.**

Economy Recovery Conservation

Serving the chemical, petrochemical, plastics,
pharmaceutical and food industries

We Stock: TANKS * VESSELS

*** REACTORS * HEAT EXCHANGERS**

*** CHILLERS * COLUMNS * MILLS**

*** SCREENERS * SILOS**

*** DUST COLLECTORS * MIXERS**

*** BLENDERS * PUMPS * CENTRIFUGES**

*** DRYERS * FILTERS * COMPRESSORS**

*** AND MUCH MORE!**

**EcReCon has over 20 acres of surplus
process equipment available for sale.**

**"We Buy and Sell Process Equipment from Individual
Pieces to Complete Plants and Provide Full Plant
Dismantling Services"**

www.ecrecon.com

Phone: 856-299-4500 • Fax: 856-299-4446

Email: Sales@ecrecon.com

www.aiche.org/cep or Circle No. 202

BOILERS

Available Immediately!



lease • rental • sale

**(3) New 250,000 PPH 750 PSI /
750 Deg. S.H. with Low NOx Burners**

**(2) New 250,000 PPH 850 PSI /
750 Deg. S.H. with Low NOx Burners**

250,000-850 PSI / 750 Deg. F.	TRAILER MOUNTED
250,000-750 PSI / 750 Deg. F.	72K-350 PSI
180,000-750 PSI / 750 Deg. F.	70K-350 PSI
165,000-1025 PSI / 850 Deg. F.	70K-350 PSI
165,000-350 PSI	45K-750 PSI
150,000-750 PSI / 750 Deg. F.	40K-350 PSI
135,000-750 PSI / 750 Deg. F.	36K-300 PSI
120,000-350 PSI	30K-300 PSI
120,000-725 PSI / 750 Deg. F.	24K-300 PSI
70,000-350 PSI	
60,000-750 PSI / 750 Deg. F.	
50,000-350 PSI	
40,000-750 PSI	
40,000-350 PSI	
30,000-350 PSI	
20,000-1600 PSI	
10-1,000 HP / 15-250 PSI	

**EMERGENCY SERVICE
24HR
EMERGENCY SERVICE**

INDECK

INDECK POWER EQUIPMENT COMPANY

tel 847.541.8300 / 800.446.3325

fax 847.541.9984

info@indeck-power.com

www.indeck.com

www.aiche.org/cep or Circle No. 203

EQUIPMENT FOR SALE

(5) 2.3 HP XJ230

(5) 2 HP XLQ LIGHTNIN AGITATORS, '95

AARON 1-GALLON SS SIGMA BLADE LAB MIXER, '88

DAY 300 GAL. LOWBOY SIGMA BLADE MIXER W/VAC.

BAKER-PERKINS 300 GALLON SIGMA BLADE MIXER

(2) ROSS 1 CU. FT. VERSA MIX, 304 SS, VAC RATED W/JKT

DAY 550 GAL. VAC JKT DAYMAX DISPERSER, 100 HP

BONNOT 4" EXTRUDER W/CONVEYORS & HEATERS

PAUL ABBE LAB BALL MILLS,

ABBE 256 CU. FT. SS DOUBLE CONE MIXER

SQUIRE COGWELL DUAL 20 HP VACUUM PUMPS

WEB SITE MOHAWK MACHINERY.COM

MOHAWK MACHINERY

CINCINNATI OH 513-771-1952

CALL JIM MUELLER'S CELL PHONE 513-608-7902

www.aiche.org/cep or Circle No. 204

Consulting Services



CRYSTALLIZATION & PRECIPITATION

Dr Wayne J. Genck Genck International

3 Somonauk Court, Park Forest, IL 60466

Tel (708) 748-7200 fax (708) 748-7208

genckintl@aol.com — http://www.genckintl.com

- Design/Scale-up
- Size Distribution
- Laboratory Investigations
- Filtration

- Troubleshooting
- Purity
- Caking
- Drying

- Particle Habit
- Product Micro-Analysis
- Polymorphism
- Kinetics Studies

◆◆◆Industrial Seminars◆◆◆

www.aiche.org/cep or Circle No. 205



MACHINERY & EQUIPMENT Co. Inc.

Quality Used Equipment!

We have over 5,000 pieces of used processing and packaging machinery available. A large portion of this equipment was used in the Chemical and Pharmaceutical Industries.

Please visit our website to view detailed descriptions and photos at:
www.machineryandequipment.com

P.O. Box 7632 San Francisco, CA 94120 Toll Free: (800) 227-4544
Fax: (415) 467-2639 Phone: (415) 467-3400
Email: info@machineryandequipment.com

www.aiche.org/cep or Circle No. 206

CLASSIFIED

Contact:

Doris B. Deutsch,
Regional Sales Manager
at 718-961-8958 or
dorid@aiche.org

PROCESS FILTRATION EQUIPMENT

JW1 Filter presses with polypro recessed plates
Sparkler & Niagara horizontal plate filters,
Model 33D17, 18S23, 1824S & 3348S
Stainless Steel ETEL & STAR Filter presses
Nutsche filter, 10 gal, 316 SS, 35 psi
K-S Avery 35 cu. ft. membrane filter press, polypro plates
US Autojet, Pressure leaf, 400 sq. ft., stainless steel

AVERY FILTER COMPANY
(201) 666-9664 Fax (201) 666-3802
E-mail: larry@averyfilter.com
www.averyfilter.com

www.aiche.org/cep or Circle No. 207

Looking to Advertise?



CEP subscribers are the chemical engineers and technical managers who specify and buy equipment and services. Advertise in CEP and reach an exclusive audience of engineering professionals with the purchasing power that you won't reach in other trade publications.

Bonus: Your CEP Marketplace ad will also be included in the digital edition of the magazine with a free hyperlink to your website. CEP Marketplace provides frequency - a major component in any successful advertising campaign - at an affordable rate.

To be included in the CEP Marketplace:

Contact: Doris B. Deutsch, Regional Sales Manager
at 718-961-8958 or dorid@aiche.org

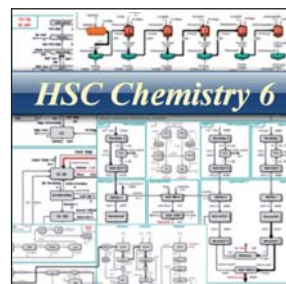
Software

www.ae-sim.com
Process Simulators

*Material Balance - Process Control
Power Plant Steam Cycles
Free Demo Downloads*

www.aiche.org/cep or Circle No. 208

Great Step Forward for Green Chemistry



HSC Chemistry® 6 process calculation software now contains a new flowsheet simulation module which makes it possible to optimize process output and minimize waste materials. HSC may be used to rapidly focus expensive experimental research towards ideal process conditions. With 21 calculation modules and 11 databases at your fingertips, HSC 6 is an invaluable tool for any process engineer or scientist.

Outotec Research Oy
hsc@outotec.com
Tel: +358-20-529 211
Fax: +358-20-529 3203

Outotec

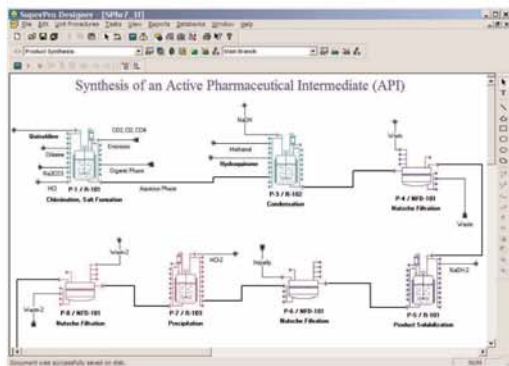
www.outotec.com/hsc

www.aiche.org/cep or Circle No. 209

Intelligen Suite

The Market-Leading Engineering Suite for Modeling, Evaluation, Scheduling, and Debottlenecking of Single & Multi-Product Facilities

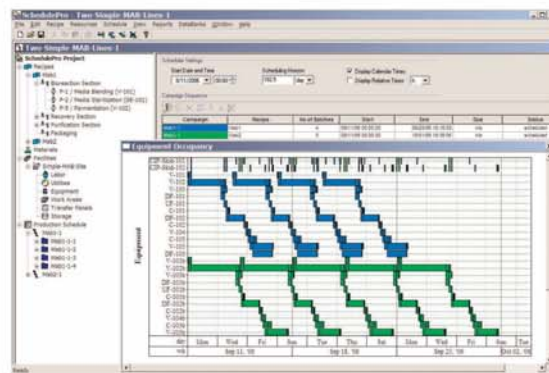
SuperPro



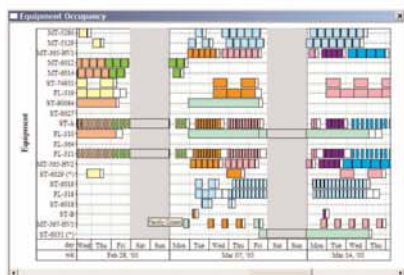
Use SuperPro Designer to model, evaluate, and debottleneck batch and continuous processes



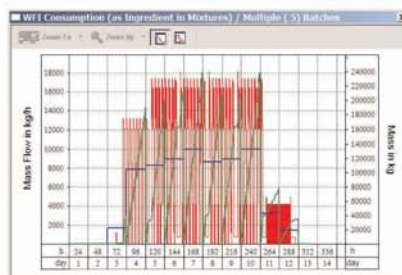
SchedulePro



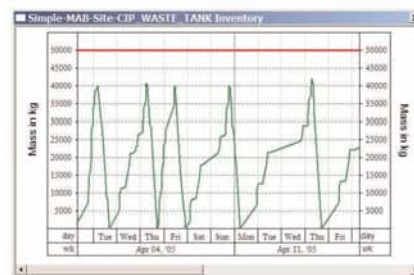
Switch to SchedulePro to schedule, model, and debottleneck multi-product facilities



Tracking of equipment occupancy in multi-product facilities



Tracking demand for resources (e.g., labor, materials, utilities, etc.)



Inventory tracking for raw materials, intermediates, products, and wastes

SuperPro Designer is a comprehensive process simulator that facilitates modeling, cost analysis, debottlenecking, cycle time reduction, and environmental impact assessment of biochemical, specialty chemical, pharmaceutical (bulk & fine), food, consumer product, mineral processing, water purification, wastewater treatment, and related processes. Its development was initiated at the Massachusetts Institute of Technology (MIT). SuperPro is already in use at more than 400 companies and 500 universities around the world (including 18 of the top 20 pharmaceutical companies and 9 of the top 10 biopharmaceutical companies).

SchedulePro is a versatile finite capacity scheduling tool that generates feasible production schedules for multi-product facilities that do not violate constraints related to the limited availability of facilities, equipment, resources and work areas. It can be used in conjunction with SuperPro (by importing its recipes) or independently (by creating recipes directly in SchedulePro). Any industry that manufactures multiple products by sharing production lines and resources can benefit from the use of SchedulePro. Engineering companies use it as a modeling tool to size utilities for batch plants, identify equipment requirements, reduce cycle times, and debottleneck facilities.

Visit our website to download detailed product literature and functional evaluation versions of our tools

INTELLIGEN, INC. • 2326 Morse Avenue • Scotch Plains, NJ 07076 • USA
Tel: (908) 654-0088 • Fax: (908) 654-3866
Email: info@intelligen.com • Website: www.intelligen.com
Intelligen also has offices in Europe and representatives in countries around the world