

CEP Showcase

Chemical Engineering Modeling Tool

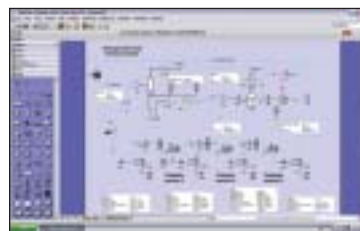


COMSOL Multiphysics® comprises a powerful, unique environment for modeling momentum, heat and mass transport coupled to chemical reactions. Now you can model fluid flow, gas flow and incompressible turbulent flow using a single tool! COMSOL Multiphysics' key features include: simultaneous solving of an arbitrary number of coupled nonlinear PDEs and state-of-the-art solvers for linear and nonlinear stationary and time-dependent problems in 1D, 2D, and 3D. **Tel: 781-273-3322; www.comsol.com**

and nonlinear stationary and time-dependent problems in 1D, 2D, and 3D. **Tel: 781-273-3322; www.comsol.com**

Reader Service Number # 150

VMGSim™ Advanced Process Simulation



Process Simulation Software models refining, chemical and oil/gas processing. Now includes support for Sulfur plants and Amine treating modeling. Write custom reactor kinetics without programming knowledge. Create custom unit operations and economic models embedded in your process model using the embedded Excel™ operation. Embed HTRI Xchanger Suite™ or HTC STX/ACX™ exchanger ratings in the process model. Completely interactive, bidirectional simulation environment. **For more information visit our website at www.virtualmaterials.com**

embedded in your process model using the embedded Excel™ operation. Embed HTRI Xchanger Suite™ or HTC STX/ACX™ exchanger ratings in the process model. Completely interactive, bidirectional simulation environment. **For more information visit our website at www.virtualmaterials.com**

Reader Service Number # 151

Piping Design Software



Chemstations has released CC-SAFETY NET for piping networks and safety relief systems, including two phase venting. These systems can be studied in a steady state or dynamic

mode. The calculations use the core components of the CHEMCAD simulator: a full physical property database and set of thermodynamic options for calculating phase equilibrium; this sets CC-SAFETY NET apart and gives users distinct, bottom-line advantages.

Visit us, <http://www.chemstations.net>, or call us, 800-243-6223.

Reader Service Number 152

ProMax® with TSWEET® & PROSIM®



ProMax® is a powerful and versatile stream based process simulation package for the design and optimization of gas gathering, amine sweetening, gas processing, refining, and chemical facilities. **Bryan Research & Engineering, Inc. Tel: 979-776-5220; www.bre.com**

Reader Service Number 153

CALL FOR EXHIBITORS & SPONSORS



Disney's Dolphin Hotel, Orlando, FL,
April 24-26, 2006

2006 AICHE Spring Meeting Expo
5th World Congress on Particle Technology Expo
2nd Global Congress on Process Safety Expo featuring:
21st Annual CCPS International Conference
40th Loss Prevention Symposium
8th Process Plant Safety Symposium

same exhibit floor with designated aisles for each

**Contact: Denise DeLuca Mallon, AICHE,
ph 212-591-7170, denid@aiche.org**

Reader Service Number 154

AICHE Annual Meeting & DIERS Conference Proceedings



The 2005 AICHE Annual Meeting 2-CD-ROM Set and DIERS Conference Book are still available for purchase. The Annual Meeting Proceedings contain over 4,450 technical papers (including those from the Management conference and abstracts from the DIERS conference) in an easy to use, fully-searchable format. "Managing Chemical Reactivity with Confidence" is the theme of

the 545-page hard-covered DIERS Book — 3rd International Symposium of Runaway Reactions, Pressure Relief Design, and Effluent Handling. Both are available for \$120 each. These invaluable resources can be purchased online at <http://shop.omnipress.com> or calling Omnipress at 800-828-0305 or 608-246-2600 (international callers) or faxing 608-246-4237.

Reader Service Number 155