



CEP Showcase

Process Measurement and Control Instruments



- * Bargraphs
- * Wireless
- * DPMs/Counters
- * 4-20mA I/O

VDC
RMS
TC
RTD



Model III-Q124

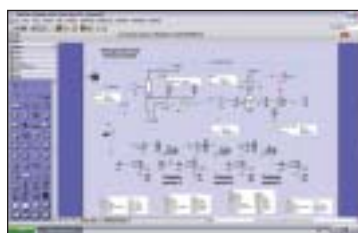
S-G
pH
%RH
Hz

**4 DIGITS & 101 NEEDLES
WITH AUTO TRICOLOR
BACKLITE
NUCLEAR/MIL-SPEC
INDUSTRIAL
RS232/485/USB, ETHER**

520-748-7900/877-227-6835

Reader Service Number # 150

VMGSim™ Advanced Process Simulation



Process Simulation Software models refining, chemical and oil/gas processing. Now includes support for Sulfur plants and Amine treating modeling. Write custom reactor kinetics without programming knowledge. Create custom unit operations and economic models

embedded in your process model using the embedded Excel™ operation. Embed HTRI Xchanger Suite™ or HTC STX/ACX™ exchanger ratings in the process model. Completely interactive, bidirectional simulation environment. **For more information visit our website at www.virtualmaterials.com**

Reader Service Number # 151

Laser Alignment System



ROTALIGN® ULTRA, the first laser alignment system with a backlit color display plus USB and Bluetooth technology! Alignment results in 3 easy steps: dimensions - measure - results. Soft foot measurement, diagnosis and correction. Machine train alignment for up to 14 machines. Outputs reports in full color.

Ludeca, Inc., 305-591-8935, www.ludeca.com. See us at Booth #2343 Chem Show

Reader Service Number 152

2-CH FFT Data Collector/Vibration Analyzer



VIBXPRT®, a lightweight analyzer for monitoring and diagnosis of machine conditions. It records all forms of machine vibrations, bearing conditions, process data and visual inspection information. Collected machinery data is stored on an expandable Compact Flash card (up to 1 gigabyte) and is transferred to the OMNITREND® maintenance software for further evaluation, report generation and

archiving. Ludeca, Inc., 305-591-8935, www.ludeca.com. See us at Booth #2343 Chem Show

Reader Service Number 153

Piping Design Software



Chemstations has released CC-SAFETY NET for piping networks and safety relief systems, including two phase venting. These systems can be studied in a steady state or dynamic

mode. The calculations use the core components of the CHEMCAD simulator: a full physical property database and set of thermodynamic options for calculating phase equilibrium; this sets CC-SAFETY NET apart and gives users distinct, bottom-line advantages.

Visit us, <http://www.chemstations.net>, or call us, 800-243-6223.

Reader Service Number 154

Innovative Ion-Exchange and Adsorber Systems



Bucher-Alimentech Ltd. is a process engineering company specializing in the development, design and manufacture of innovative ion exchange and adsorptive polymer systems primarily for treatment of fruit juices and liquid food stuffs. Recent projects also include pharmaceutical ingredients.

Staff compliment includes engineers, chemists and specialist fabricators. Bucher-Alimentech Ltd. has an international reputation for the depth of staff knowledge and for the high quality of the machinery we construct. We have over 60 machines in 22 countries. All machines exported are built to comply with local regulations such as CE for Europe, UL for USA. Please visit www.bucheralimentech.com, or e-mail nick.shea@bucheralimentech.com

Reader Service Number 155



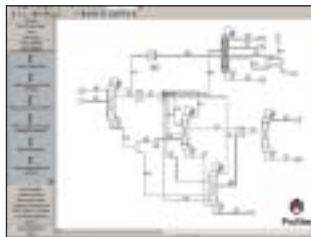
CEP Showcase

Chemical Engineering Modeling Tool



COMSOL Multiphysics® comprises a powerful, unique environment for modeling momentum, heat and mass transport coupled to chemical reactions. Now you can model fluid flow, gas flow and incompressible turbulent flow using a single tool! COMSOL Multiphysics' key features include: simultaneous solving of an arbitrary number of coupled nonlinear PDEs and state-of-the-art solvers for linear and nonlinear stationary and time-dependent problems in 1D, 2D, and 3D. **Tel: 781-273-3322; www.comsol.com**

ProSimPlus: the alternative in process simulation



ProSimPlus provides over 70 unit operations including complex models (three phase and reactive distillation, brazed plate-fin exchangers...), and has the capabilities to represent highly non-ideal systems thanks to one of the richest thermodynamic libraries available on the market. ProSimPlus gives results without time-consuming convergence tests thanks to unrivaled convergence methods. Easy to use and open, ProSimPlus is very quickly adopted by users and sets standards in flexibility as its architecture enables to integrate custom unit operations, calculation methods, thermodynamic models or private databases. **info@prosim.net ; www.prosim.net**

Reader Service Number # 156

Reader Service Number # 157

86,604 data points and counting,

Accuracy. In chemical engineering it's not only important, it's essential. The DIPPR 801 database sets a new standard for accuracy with complete, evaluated, cost-efficient data. Data so accurate it can help you avoid setbacks and reduce over-design costs.

Containing 1,793 components that have been rigorously evaluated, DIPPR 801 provides the thermophysical property data you need. You get 33 fixed-value and 15 temperature-dependent properties for each evaluated component. That's 86,604 data points.

And the list of components that have been evaluated keeps on growing, making DIPPR 801 the best choice for meeting your on-going data needs. Developed by committed industrial sponsors of AIChE's DIPPR technology alliance, DIPPR 801 is the only source of physical property data available with the powerful, user-friendly DIADEM interface.

For more information on DIPPR 801 visit: <http://dippr.byu.edu> or email salesdippr@byu.edu.

DIPPR 801 Setting the Standard for Evaluated Data.

© 2004 AIChE #0318 10.04

www.cep magazine.org or Circle No. 128