

CEP Showcase

Process Measurement and Control Instruments

OTEKCORP.COM

- * Bargraphs * DPMs/Counters
- * Wireless * 4-20mA I/O



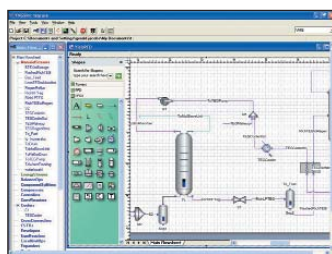
Model 6101

4 1/2 LCD BACKLIT DPM
Only 1.5 x 2.5 x 1.75 Deep
6101: V/mADC Input
6171: Loop Powered!

520-748-7900/877-227-6835

Reader Service Number # 150

Process Simulation Software



VMGSim™ provides accurate, robust and cost-effective Process Simulation Software to predict the behavior of process units and manufacturing plants. Excellent thermophysical properties package powered by VMGThermo™. Create process schematics using the integrated Visio™ graphics engine. Embed HTRI Xchanger Suite™

models in your simulation. Seamlessly connect Excel™ spreadsheets as unit operations in your flowsheet model in a Completely Interactive, Bidirectional simulation environment. **For more information visit our website at www.virtualmaterials.com**

Reader Service Number # 151

Piping Design Software



Chemstations has released CC-SAFETY NET for piping networks and safety relief systems, including two phase venting. These systems can be studied in a steady state or dynamic

mode. The calculations use the core components of the CHEMCAD simulator: a full physical property database and set of thermodynamic options for calculating phase equilibrium; this sets CC-SAFETY NET apart and gives users distinct, bottom-line advantages.

Visit us, <http://www.chemstations.net>, or call us, 800-243-6223.

Reader Service Number # 152

TSWEET®



Process simulation software makes plant operations, troubleshooting and optimization easier - Experience the difference of the TSWEET®- PROSIM® package and enjoy the power our software can offer your company.

- Amine Sweetening, Sulfur Recovery, Tail Gas Clean-up, Sour Water Strippers, Exchanger Rating/Sizing
- Gas Processing, Refining, Petro-

chemical, Glycol Dehydration and Hydrate Inhibition. **Bryan Research & Engineering, Inc. Tel: 979-776-5220 www.bre.com**

Reader Service Number # 153

Chemical Engineering Modeling Tool



COMSOL, Inc.'s FEMLAB puts you on the front line! FEMLAB Chemical Engineering comprises a powerful, unique environment for modeling momentum, heat and mass transport coupled to chemical reactions. Now you can model fluid flow, gas flow and incompressible turbulent flow using a single tool. FEMLAB's key features include: simultaneous solving of an arbitrary number of coupled nonlinear PDEs

and state-of-the-art solvers for linear and nonlinear stationary and time-dependent problems in 1D, 2D, and 3D. **www.comsol.com**

Reader Service Number # 154

Pre-Fab Rack, Adjustable Gangways, Hose Arms Make Smooth Operation



This Rack, shipped in large welded sections, is easily erected on the jobsite with inexperienced personnel. It is equipped with adjustable gangways for safe access to the cars, no matter what the size, construction, or spotting of the car. Product is transferred with easy to operate, counter-balanced, hose arms

that carry the hose out to the car, hold it up while making connection, and carry it back to the rack after the operation, neatly storing it until needed again. All of these features provide an economical, safe, fast, and smooth operation. **HEMCO Industries, Inc., 2408 Karbach, Houston, Texas 77092; Tele: 713/681-2426; Fax: 713/681-2427; Web: www.hemcoind.com; E-Mail: sales@hemcoind.com.**

Reader Service Number # 155