

The Campaign
for AIChE

DOING
A WORLD
OF GOOD





Imagine What All of Us Can Do

The Campaign for AICHE is one of the most ambitious fundraising programs in our history.

AICHE expects to raise \$15 million over five years that will be directed toward five transformative priorities. Each priority will advance chemical engineering and bring that expertise to bear in addressing societal needs.

Reaching this goal will require support of every member of the AICHE community, as well as corporate partners and others who are passionate about meeting society's greatest challenges.

Since the day AICHE was founded in 1908, its members have been united by a fundamental desire to be a positive force for change. They solve societal problems and benefit humanity through the safe and responsible practice of chemical engineering.

On the brink of new possibilities for chemical engineering, we invite you to join us in a leadership role to help shape the profession for the future.

Together, we can do a world of good.

Five Transformative Priorities

These five priorities have the potential to positively impact society and chemical engineering for decades to come.

The Campaign for AIChE will fund five priorities identified by the AIChE community as imperative to support and advance all the good chemical engineering brings to the world.

Each priority is supported by a series of strategic initiatives that allow AIChE to achieve its overall goals to advance the profession and provide vital information, resources, and opportunities to the chemical engineering community around the globe.

Priority #1
\$1.65 million

Attracting and Retaining the Best and the Brightest

If we are to push the boundaries of chemical engineering, then we must broaden our appeal by attracting people from communities not typically drawn to the profession. Encouraging diversity and inclusion drives the advancement of our profession. Also, we must do everything possible to retain those whose contributions already elevate the field. It is imperative that we capture the excitement and possibility of chemical engineering beginning at a very early age, become a magnet for tomorrow's leaders, while having an equally strong pull for those already engaged.

Priority #2
\$4.2 million

Education, Training, and Career Development

AIChE is the "go-to" place for chemical engineers to expand their knowledge and build relationships that allow them to practice chemical engineering at its highest level. Funding education, training, and career development programs help develop tomorrow's leaders. It ensures that today's chemical engineers have access to lifelong learning programs that allow them to fulfill their potential and positively impact the world.

Priority #3
\$3.0 million

Research and Innovation

As the world's population continues to expand, it is crucial that chemical engineers find ways to meet our planet's grand challenges in areas such as energy, health and nutrition, water, environment, and sustainability. AIChE Industry Technology Groups are vital to our ability to respond to new opportunities, develop new methodologies and support chemical engineering students and professionals in entrepreneurship, innovation and creativity.

Priority #4
\$4.95 million

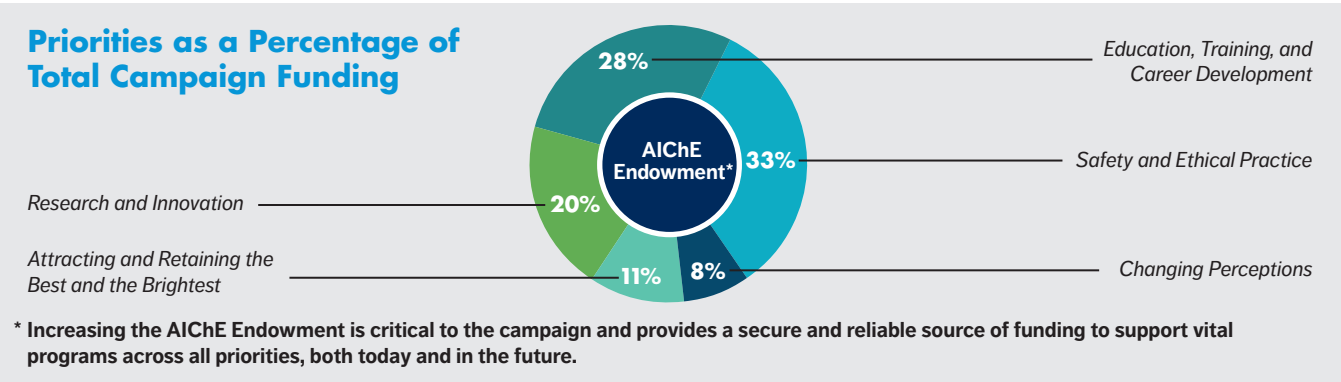
Safety and Ethical Practice

As chemical engineers we are committed to the safe and responsible practice of our profession. The Undergraduate Process Safety Learning Initiative is a major global effort and core campaign priority to accelerate process safety education and better prepare graduates for the workforce. Establishing consensus guidelines and educational initiatives are the cornerstone of what we do now and for the future.

Priority #5
\$1.2 million

Changing Perceptions

The world around us would be virtually unrecognizable without the contributions made by chemical engineers. Yet there is a significant gap between the good chemical engineers do and how the world perceives us. Our ability to do good is influenced by the trust we earn, and by effectively communicating the positive impact chemical engineers make, as well as our commitment to upholding safety and ethical practice.



A Measure of Gratitude

Your gift to AIChE helps chemical engineers do a world of good.

We not only recognize the positive impact made by chemical engineering, we also recognize the positive impact made by those individuals and institutions whose donations help us achieve our collective goal of advancing the profession.

Individual Giving Levels

Benefactor*	\$100,000 and up
Underwriter*	\$50,000 to \$99,999
Patron*	\$25,000 to \$49,999
Partner	\$10,000 to \$24,999
Supporter	\$5,000 to \$9,999
Friend	up to \$4,999

- Individual donor recognition benefits vary according to the level of support and may include the following:
- Program Naming Opportunities
 - Invitation and VIP access to AIChE events
 - Recognition on AIChE Donor Wall
 - Recognition at AIChE Annual and Spring Meetings
 - Recognition on AIChE website, newsletters and publications, including *Chemical Engineering Progress* magazine
 - Recognition in the AIChE Foundation Annual Report

*Early leadership supporters at the Patron level and above are recognized as Campaign Champions.

Corporate Giving Levels

Benefactor*	\$750,000 and up
Underwriter*	\$500,000 to \$749,999
Patron*	\$250,000 to \$499,999
Partner	\$100,000 to \$249,999
Supporter	\$50,000 to \$99,999
Friend	\$10,000 to \$49,999

- Corporate donor recognition benefits vary according to the level of support and may include the following:
- New Initiative, Program, Endowment and Scholarship Naming Opportunities
 - Recognition on AIChE Corporate Giving Wall
 - Speaking opportunities at AIChE Annual Meeting, Spring Meeting, and events
 - Invitation and VIP access to AIChE events
 - Recognition on AIChE website, newsletters and publications, including *Chemical Engineering Progress* magazine
 - Recognition in the AIChE Foundation Annual Report

*Early industry leadership supporters at the Patron level and above are recognized with a special designation as Founders' Circle members.

Why Now?

There has never been a time in history when sweeping change has come about faster. The way we communicate, educate, share information, and purchase goods has transformed our entire society in just a few short years. The pace of change in chemical engineering is at least as rapid.

The growing importance of energy alternatives, advanced materials, biological and environmental engineering, sustainability awareness, smart manufacturing, and water technology are some of the shifts we are seeing today—and the future promises to bring even more radical developments.

As engineers, educators, and corporate leaders, it is our obligation not to just keep up with these changes, but to drive them—to shape the future. The actions we take today will define chemical engineering for decades to come.

50,000+ Members and Corporate Partners



\$15 Million Campaign Funding Goal



5 Transformative Priorities



Countless Ways to Positively Impact Chemical Engineering and the World Around Us



Corporate Honor Roll

AIChE thanks the following companies for their early leadership and support of the “Doing a World of Good” campaign.*

FOUNDERS' CIRCLE

Benefactors

\$750,000 and up



Patrons

\$250,000 to \$499,999



CAMPAIGN PARTNERS

\$100,000 to \$249,999

Archer Daniels Midland Company
Mitsui & Co. (U.S.A.), Inc.

Olin
PolyOne

Wacker Chemical Corporation

CAMPAIGN SUPPORTERS

\$50,000 to \$99,999

Air Liquide
Arkema Inc.
Bouchard Transportation
Cargill

Evonik
Exxon Mobil Corporation
Intercontinental Terminal
Company LLC

Novus International, Inc.
Trinseo LLC

CAMPAIGN FRIENDS

\$10,000 to \$49,999

3M
Accella Performance Materials
Air Products
Arsenal Capital
Asset Mangement Company
Axalta Coating Systems
Bank of America
BASF
Barclays
BBDO

Biogen
Centerview Partners
Day & Zimmermann
Duff & Phelps
Fragomen, Del Rey, Bernsen & Loewy, LLP
Honeywell
Jacobs
Jenner & Block
Johnson & Johnson
Kirkland & Ellis LLP

MANA
Morgan Stanley
Peach State Labs, LLC
Pfizer
Praxair
Shearman & Sterling LLP
SNF Holding Company
Teneo Strategy LLC
The Lubrizol Corporation
UMUS

*As of December 21, 2016. We deeply regret any omissions.

Individual Honor Roll

AIChE thanks the following individuals for their early leadership and support of the “Doing a World of Good” campaign.*

CAMPAIGN CHAMPIONS

Underwriters

\$50,000 to \$99,999

Eduardo D. Glandt	Syamal K. and Susmita Poddar	June C. Wispelwey and
Deborah L. Grubbe	James B. Porter, Jr.	Mark B. Bradley

Patrons

\$25,000 to \$49,999

Thomas F. Edgar	Otis A. and Phyllis Shelton	Alfred E. Wechsler
H. Scott Fogler	Gregory N. Stephanopoulos	S. Shariq Yosufzai
Dale L. and Von Keairns	John Y. Televantos	
Peter B. and Susan Lederman	James A. Trainham	

MAJOR CONTRIBUTORS

Partners

\$10,000 to \$24,999

Bruce A. Finlayson	Ronald W. Rousseau	Phillip R. Westmoreland and
Norman and Jane Li	Robert H. Smith	Kathleen J. Beach
Scott D. Love	Vern W. Weekman, Jr.	

Supporters

\$5,000 to \$9,999

Thomas F. and Anne R. Degnan	Glenn E. Taylor	Arvind Varma
Henry T. Kohlbrand	Cheryl I. Teich	

Friends

up to \$4,999

William D. Byers	Arthur E. Humphrey	David A. Rosenthal
T. Bond Calloway	Annette A. Johnston	Warren and Diane Seider
Calvin B. Cobb	Daniel P. Lambert	Freeman E. Self, Jr.
Edward L. Cussler	Edward F. Leonard	Christine B. and
Basil C. and Ann S. Doumas	Lehigh Valley Local Section	Regan G. Seymour
Lawrence B. Evans	Duncan and Suzanne Mellichamp	Diane K. Spencer
Gerhard J. Frohlich	David B. Nelson	Rosemarie D. Wesson
Michael T. Harris	Kimberly L. and Gregory E. Ogden	
John “Jack” W. Hipple	William R. Parrish	

*As of December 31, 2016. We deeply regret any omissions.

DOING A WORLD OF GOOD

The Campaign for AIChE

AIChE Leadership

June Wispelwey
Executive Director

Cathy Diana
Director, Foundation

AIChE Presidents

T. Bond Calloway, Jr.
2017 President

Gregory N. Stephanopoulos
2016 President

Cheryl I. Teich
2015 President

Foundation Board of Trustees

Eduardo D. Glandt
Chair

S. Shariq Yosufzai
Vice Chair

Peter B. Lederman
Past Chair

Campaign Chairs

James (Jim) R. Fitterling
President and Chief Operating Officer
The Dow Chemical Company

John Y. Televantos
Partner, Arsenal Capital Partners

For Information on Opportunities for Giving

Lisa Lanzkowsky
Director, Corporate Relations and Major Gifts
lisal@aiche.org
646-495-1351

Stephanie Viola
Director of Development
stepv@aiche.org
646-495-1342

aiche.org/giving

AIChE
The Global Home of Chemical Engineers



DOING
A WORLD
OF GOOD