

AICHE[®]



LDC Driving Leadership

Program

2009 Leadership Development Conference
Hosted by the Central Savannah River Section
Augusta Marriott Hotel and Suites



2009 Leadership Development Conference:

“LDC Driving Leadership”

Schedule

Friday, June 12	Board of Directors Meeting, Check-in and AIChE Overview at LDC
7:30 am – 8:00 am	Board of Directors’ Breakfast*
8:00 am – 5:00 pm	Board of Directors’ Strategy Session*
4:00 pm – 10:00 pm	LDC Registration (Prefunction B)/ Hotel Check-In
5:30 pm – 6:30 pm	LDC/Board of Directors’ Welcome Reception (Outside Oglethorpe FGH)
6:30 pm – 8:00 pm	LDC/Board of Directors’ Dinner (Oglethorpe FGH)
8:00 pm – 10:00 pm	AIChE Overview of new initiatives, Strategic Plan, Meet AIChE Leaders/Staff (Oglethorpe FGH)
Saturday, June 13	Practical Leadership Training (Laptop with wireless card recommended)
7:00 am – 8:00 am	LDC Registration (Prefunction B)
7:00 am – 7:50 am	LDC Breakfast (Oglethorpe FGH)
8:00 am – 8:50 am	Membership: Lifeblood of an Organization – Ralph Kempksi (Oglethorpe FGH)
8:50 am – 9:40 am	Programming: Fuel for Growth – Christine Seymour, Todd Willman
10:00 am – 10:50 am	Mentoring: Building Tomorrow’s Leaders – George Wicks
11:10 am – 12:00 pm	Young Professionals: Present and Future Leaders – Carol Schmidt
12:00 pm – 1:00 pm	Lunch (Oglethorpe E)
1:10 pm – 2:00 pm	Communication: Leading with Questions – Mark Harper (Oglethorpe FGH)
2:10 pm – 4:00 pm	Creative Problem Solving Workshop – H. Scott Fogler
4:10 pm – 5:00 pm	Supporting Others: Students, Society – Michael Matthews
5:30 pm – 7:00 pm	Drinks/Appetizers/Scavenger Hunt at the National Science Center’s Fort Discovery
7:00 pm – 9:30 pm	Dinner at Fat Man’s Cafe followed by entertainment by Pete Ludovice, a Georgia Tech Chemical Engineering Professor and Comedian
Sunday, June 14	Practical Leadership Exercises (Laptop with wireless card recommended)
7:00 am – 7:50 am	LDC Breakfast (Oglethorpe E)
8:00 am – 9:20 am	Breakout Session #1 (3 choices, Details page 7)
9:20 am – 10:40 am	Breakout Session #2 (3 choices, Details page 7)
10:40 am – 12:00 pm	Breakout Session #3 (3 choices, Details page 7)
12:00 pm – 12:30 pm	Lessons Learned and Evaluation
9:30 am – 3:30 pm	Executive Committee Meeting*

* Board attendance only



2009 Leadership Development Conference:



“LDC Driving Leadership”

Table of Contents

Sponsor Advertisements.....	2
Program Details – Day 1.....	3
Program Details – Day 2.....	4
Program Details – Day 3.....	6
Speaker Bios.....	7
Floor Plan highlighting frequently used rooms during LDC.....	11
AICHE Leadership Development Conferences.....	13
AICHE Yellow Pages.....	14
Sponsors.....	Back Cover

Attached Resource Guides

- 2009 Career and Education Operating Council (CEOC) Guide
- AICHE Local Section Officers’ Resource Guide
- AICHE Division/Forum Officers’ Resource Guide

Sponsor Advertisements





2009 Leadership Development Conference:



“LDC Driving Leadership”

Program Details – Day 1

Friday, June 12 Board of Directors Meeting, Check-in and AIChE Overview at LDC

- 4:00 pm – 10:00 pm LDC Registration (**Prefunction B**)/ Hotel Check-In
- 5:30 pm – 6:30 pm LDC/Board of Directors' Welcome Reception (**Outside Oglethorpe FGH**)
- 6:30 pm – 8:00 pm LDC/Board of Directors' Dinner – **Oglethorpe FGH**
- 8:00 pm – 10:00 pm AIChE Overview of new initiatives, Strategic Plan, Meet AIChE folks – **Oglethorpe FGH**
 - 8:00 – 8:10 Opening remarks – AIChE President, H. Scott Fogler
 - 8:10 – 8:20 AIChE Strategic Plan – June Wispelwey, Executive Director
 - 8:30 – 8:40 Institute Finances – Rick Cain, Director, Finance & Strategic Programs
 - 8:40 – 8:50 Young Professional Initiative – Felicia Guglielmi, Director, Volunteer & Membership Activities
 - 8:50 – 9:00 Membership & ChemE-on-Demand – Bette Lawler, Director of Operations
 - 9:00 – 9:10 Speakers Corner – Jennifer Sinclair Curtis, Rose Wesson
 - 9:10 – 9:30 Q&A
 - 9:30 – 9:45 Welcome and Thank Sponsors, Jeff Pike, Chair, Central Savannah River



2009 Leadership Development Conference:

“LDC Driving Leadership”

Program Details – Day 2

Saturday, June 13 Practical Leadership Training (Laptop with wireless card recommended)

All Events are in **Oglethorpe FGH** except as noted below.

- 7:00 am – 8:00 am LDC Registration (**Prefunction B**) / Hotel Check-In
- 7:00 am – 7:50 am Breakfast
- 8:00 am – 8:50 am Membership: The Lifeblood of an Organization - Ralph Kempiski
- 8:50 am – 9:40 am Programming: Fuel for Growth – Christine Seymour
- 9:40 am – 10:00 am Break Outside of **Oglethorpe FGH**
- 10:00 am – 10:50 am Mentoring: Building Tomorrow's Leaders - George Wicks
- 11:10 am – 12:00 pm Young Professionals: Present and Future Leaders – Carol Schmidt, South Texas YPs
- 12:00 pm – 1:00 pm Lunch (**Oglethorpe E**)
- 1:10 pm – 2:00 pm Communication: Leading with Questions - Mark Harper
- 2:00 pm – 2:10 pm Short Break Outside of **Oglethorpe FGH**
- 2:10 pm – 4:00 pm Creative Problem Solving Workshop - H. Scott Fogler
- 4:00 pm – 4:10 pm Short Break Outside of **Oglethorpe FGH**
- 4:10 pm – 5:00 pm Supporting Others: Students, Society - Michael Matthews

Program Details – Day 2 (continued)

Evening, Saturday, June 13

5:30 pm – 7:00 pm Drinks/Appetizers/Scavenger Hunt at the National Science Center's **Fort Discovery**

Teams will enjoy a self-guided tour of the National Science Center's **Fort Discovery** in search for answers to a specially-designed Scavenger Hunt. Prizes will be awarded to the top team. Beverages and appetizers will be available during the Scavenger Hunt at the co-located **Fat Man's Riverwalk Cafe**, starting at 6:00 pm.

7:00 pm – 9:30 pm Dinner at **Fat Man's Cafe**

A relaxing dinner after a long day of Professional Development seminars will be provided at Fat Man's Riverwalk Cafe. Dinner at **Fat Man's Cafe** followed by entertainment by Pete Ludovice, a Georgia Tech Chemical Engineering Professor and Comedian.

Pete Ludovice received his Ph.D. in Chemical Engineering from MIT and worked in the molecular modeling software industry before becoming a professor at Georgia Tech, in which his research interests include the simulation of synthetic / biological macromolecules. His second love is comedy, where Dr. Ludovice has combined technology, education and humor before diverse audiences including technical professional societies, corporations and comedy clubs from coast to coast. Dr. Ludovice will be providing humorous entertainment Saturday evening as he speaks on "Humor and It's Role in Technical Innovation."





2009 Leadership Development Conference:

“LDC Driving Leadership”

Program Details – Day 3

Sunday, June 14 Practical Leadership Exercises (Laptop with wireless card recommended)


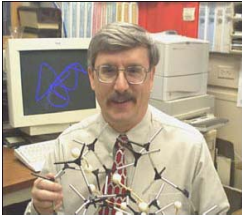
7:00 am – 7:50 am LDC Breakfast (**Oglethorpe E**)

Time	Oglethorpe F	Oglethorpe G	Oglethorpe H
8:00 - 9:10 am	Resuscitating a Dying Section aka Improving or Building Stronger Local Sections – Dave Jacobs, Jeffery Perl , Freeman Self, Michael Poirier, Felicia Guglielmi Session Chair: Dan Lambert	Developing Female Leaders – Joette Sonnenberg , Marie Kane, Heather Mentzer, June Wispelwey Session Chair: Kerri Crawford	Leading a Volunteer Organization, Dave Eckhardt , Nina Scatton Session Chair: Jeff Pike
9:10 - 9:20 am	Break Outside of Oglethorpe FGH	Break Outside of Oglethorpe FGH	Break Outside of Oglethorpe FGH
9:20 - 10:30 am	Energizing a Healthy Section – Chip Lasher, John Steimke , Dave Jacobs, Felicia Guglielmi Session Chair: Kerri Crawford	How to engage College Students and Young Professionals – Carol Schmidt , Lowell Aplebaum Session Chair: Jeff Pike	Best Practices for Divisions and Forums – Bond Calloway , Chris Bannochie, Nina Scatton Session Chair: Dan Lambert
10:30 - 10:40 am	Break Outside of Oglethorpe FGH	Break Outside of Oglethorpe FGH	Break Outside of Oglethorpe FGH
10:40 - 11:50 am	Benefits of company sponsorship of local sections, Todd Willman , Lowell Aplebaum Session Chair: Jeff Pike	Diversifying your membership: Person to Person – Christine Grant , Nina Scatton Session Chair: Dan Lambert	How to Plan a Leadership Development Conference – Chip Lasher, John Steimke , Felicia Guglielmi Session Chair: Kerri Crawford
11:50 am - 12:00 pm	Break Outside of Oglethorpe FGH	Break Outside of Oglethorpe FGH	Break Outside of Oglethorpe FGH




12:00 pm – 12:30 pm Lessons Learned and Evaluation (**Oglethorpe E**)[#]

[#] a box lunch will be provided for each attendee who attends the Lessons Learned Evaluation.

Speaker Bios

<p>Mark Harper</p> <p>http://www.unitedenergyusa.com</p>	<p>Harper is owner and CEO of United Energy, established in 1995 primarily as a bulk plant operations selling fuel and lubricants, United Energy has grown from a small town jobber to a multi-state wholesale marketer selling and delivering over 100 million gallons annually in over a 5 state area including Motor grade fuels, Alternative fuels, lubricants, and specialty services including procurement strategies, contract management, and inventory management.</p> <p>Harper, originally from Toledo, Ohio and a graduate of the University of Toledo, has worked in the oil industry since 1988. Prior to his current role, Harper served as president, U.S. Marketing, for ConocoPhillips, with responsibility for ConocoPhillips’ petroleum marketing activities in North America. He was named to that position in 2002 after serving as vice president, Phillips Petroleum Company, with responsibility for dealer and marketer activities for Phillips’ refining, marketing and transportation organization.</p> <p>Harper began his career with BP Oil Company and held various retail marketing and real estate & market development roles. Tosco Corporation acquired BP’s northwest refining and marketing operations in 1994 and by 1996 Harper had been named vice president of market development, and eventually became executive vice president of branded retail for Tosco Marketing Company. When Phillips Petroleum Company acquired Tosco, Harper was named vice president of Phillips Petroleum.</p>
<p>Michael Matthews</p>  <p>http://www.che.sc.edu/faculty/matthews/default.htm</p>	<p>Matthews is the chair of the Chemical Engineering Department at the University of South Carolina in Columbia, SC. Matthews received his PhD in Chemical Engineering from Texas A&M University.</p>
<p>George Wicks</p> 	<p>Wicks is a Senior Consulting Scientist in the Savannah River National Laboratory, where he has worked for almost 40 years. He received his PhD in 1974 in Metallurgy & Materials Science from MIT, his MS in 1971 from Harvard University in Applied Physics & Engineering and a SM in Materials Science and BS in Engineering Science from Florida State University.</p> <p>Wicks has been involved for more than 35 years in many aspects of glass science, development of sol-gel glass composites, and management of high level radioactive waste. He is considered an "internationally recognized authority on the vitrification of nuclear wastes". Wicks has mentored more than 50 people. In addition to solving some of our site’s most important technical challenges, he will leave a legacy in the people he has mentored, coached and encouraged.</p>

Speaker Bios (Continued)

<p>Ralph Kempksi</p> 	<p>The Reverend Ralph A. Kempksi served as Bishop of the Indiana- Kentucky Synod of the Evangelical Lutheran Church in America from 1979 to 1998. The synod had 241 congregations, 87,000 members and 320 clergy. Kempski’s chief functions were to give counsel and guidance to the synod’s churches, pastors, and associates in ministry, to administer a \$2.9 million budget and a professional and support staff of clergy and lay persons, to represent the Synod and Evangelical Lutheran Church in America in a variety of situations and on a number of boards, and to preside over an annual assembly.</p> <p>Prior to his election as bishop, he served as pastor of Epiphany Lutheran Church, Minneapolis, MN; St. Stephen Lutheran Church, Fern Creek, KY; and Our Saviour Lutheran Church, West Lafayette, IN.</p>
<p>Carol Schmidt</p> <p>AIChE Young Professionals Advisory Board</p>	<p>Lead for South Texas Section Young Professionals.</p>
<p>H. Scott Fogler 2009 AIChE President</p> 	<p>Fogler has a BS in Chemical Engineering for the University of Illinois, an MS and PhD in Chemical Engineering from the University of Colorado. He has been on the faculty of the Chemical Engineering Department at the University of Michigan since 1965, including tenure as the Department Chair. Fogler is the author of over 200 research publications and two textbooks, including Strategies for Creative Problem Solving. Fogler has been extremely involved in AIChE, including serving as AIChE director from 1994-1997, Chemical Engineering Technology Operating Council (CTOC) from 1999-2005 and AIChE president in 2009.</p>
<p>Christine B. Seymour</p> 	<p>Christine Seymour is serving on the AIChE Board of Directors. She has also been the Spring Meeting Programming Chair (2008), the Spring Meeting Programming Vice-Chair (2005), the Process Development Division Chair (2003-2005), and the Process Development Division Programming Chair (1999-2001).</p> <p>In addition to her role as an AIChE volunteer, Christine is an Associate Research Fellow in Global Chemistry and Manufacturing Controls (CMC) at Pfizer Inc. She leads the CMC regulatory strategy and implementation for a portfolio of projects across all phases of drug development and commercialization. Previously, Christine led active pharmaceutical ingredient research teams at Pharmacia Corp as well as chemical process research projects at G. D. Searle. Christine earned a B.S. from Lehigh University and a Ph.D. from the University of Massachusetts, Amherst.</p>



Speaker Bios (Continued)

Todd J. Willman



Professional Experience: 25 years at EPCON International developing fluid flow software, simulation software, and thermophysical properties software for chemical engineers working in the oil, gas and chemical processing industries, currently in the role of Director of Development and Engineering. Developed and manage a practical fluid flow simulation modeling service to improve plant reliability, safety, and profitability by modeling plant utility systems. As Chair of the South Texas Section of the American Institute of Chemical Engineers (largest in the local section in the nation) developed closer relationships with key employers in the greater Houston area through sponsored meeting to more than double monthly meeting attendance. Holds three patents for process engineering software and has co-authored several papers on the practical application of fluid flow technology to solve root-cause process plant problems.

AIChE[®]

2009 Leadership Development Conference:



“LDC Driving Leadership”

Notes

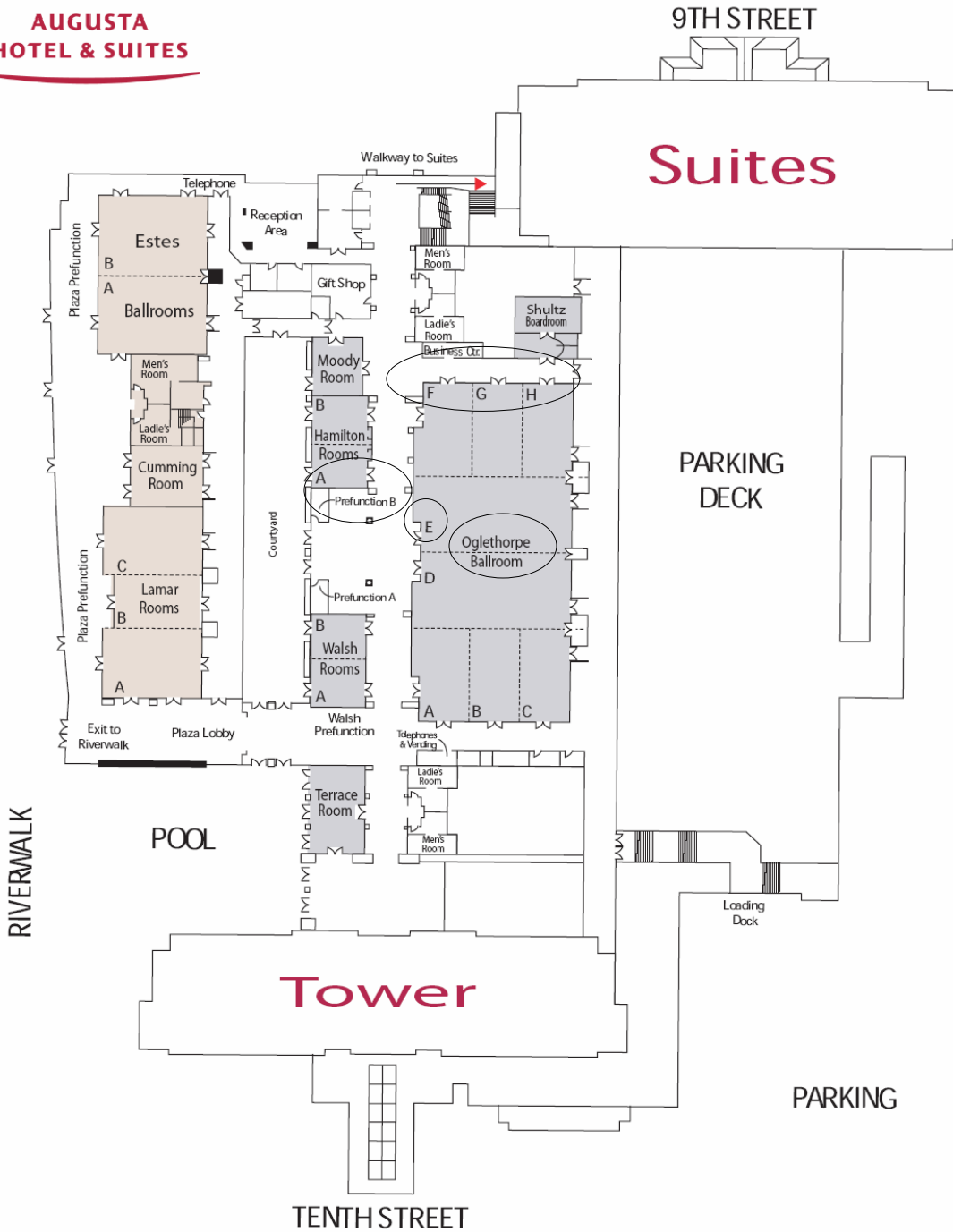
2009 Leadership Development Conference:

“LDC Driving Leadership”

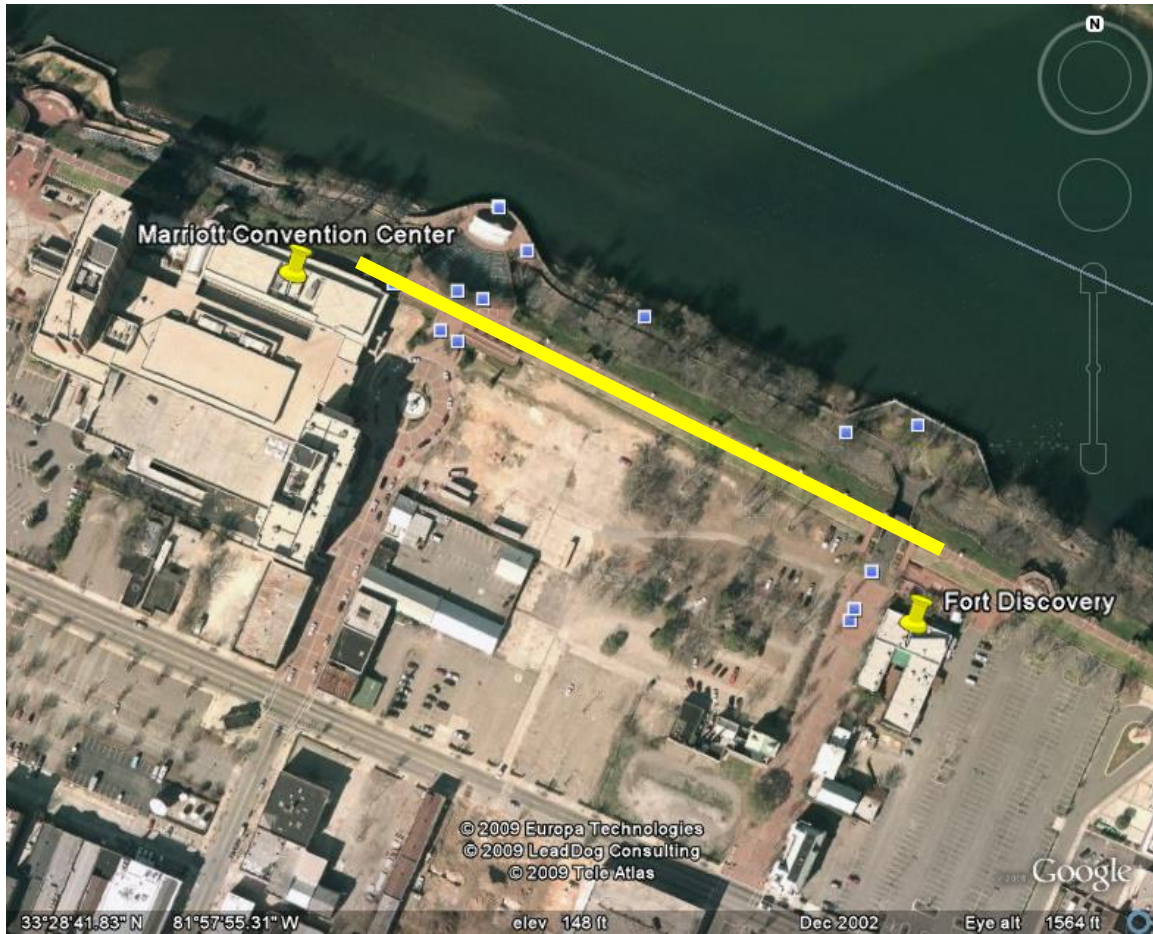
Floor Plan highlighting frequently used rooms during LDC.



MARSHALL UNIVERSITY
AUGUSTA
HOTEL & SUITES



Directions from the Marriott Convention Center to the National Science Center’s Fort Discovery



For those preferring to walk via the Augusta Riverwalk (see map above):

- Exit Marriott Convention Center from the back hallway onto the Riverwalk.
- Turn Right onto the Riverwalk.
- Follow the Riverwalk approximately ¼-mile to the National Science Center’s Fort Discovery.
- After passing the helicopter, turn Right into Fort Discovery.

For those preferring to drive:

- Exit Marriott parking lot and turn Left onto 10th Street.
- Turn Left onto Reynolds Street.
- Follow Reynolds Street to 7th Street.
- Turn Left onto 7th Street and park in Fort Discovery parking deck.
- Follow signs to Fort Discovery entrance. Elevator is available if needed from parking deck.



2009 Leadership Development Conference:

“LDC Driving Leadership”

AIChE Leadership Development Conferences

(Formerly Know as AIChE Officers Conferences)

Until 1989, the conference was held at AIChE’s New York City headquarters.

<u>Year</u>	<u>Location</u>	<u>Host Section</u>
1989	– St Louis, MO	St Louis Local Section
1990	– Buffalo, NY	Western New York Local Section
1991	– Madison, WI	Wisconsin Local Section
1992	– Scottsdale, AZ	Arizona Local Section
1993	– Clearwater Beach, FL	Pensacola Local Section
1994	– Tulsa, OK	Tulsa Local Section
1995	– Hershey, PA	Susquehanna Local Section
1996	– Scottsdale, AZ	Arizona Local Section
1997	– New Orleans, LA	New Orleans Local Section
1998	– Seattle, WA	Peugeot Sound Local Section
2002	– Chicago, IL	Chicago Local Section
2003	– Woodcliff Lake, NJ	North Jersey Local Section
2006	– Houston, TX	South Texas Local Section
2007	– Boston, MA,	Ichthyologists Local Section
2009	– Augusta, GA	Central Savannah River Local Section



2009 Leadership Development Conference:

“LDC Driving Leadership”

AICHE Yellow Pages

1. Advertising Recruitment and Career Fairs

Denise Deluca, Global Recruiter Sales Manager

denid@aiiche.org

646.495.1362

2. Advertising Products & Services

Conferences Sponsorships and Exhibits
Doris Deutch, Global Display Sales Manager

dorid@aiiche.org

646.495.1361

Karen Simpson, Sales Administrator

kares@aiiche.org

646.495.1346

3. Awards

Gordon Ellis

gorde@aiiche.org

646.495.1348

4. Career Services

Felicia Guglielmi, Director, Volunteer and Membership Activities

felig@aiiche.org

646.495.1330

5. Center for Chemical Process Safety (CCPS)

Roxy Schneider, Sponsor Support Engineer

roxys@aiiche.org

646.495.1372

Scott Berger, Director

scotb@aiiche.org

646.495.1370

6. Chemical Engineering Progress Magazine

Cynthia Mascone, CEP, Editor-in-Chief

cyntm@aiiche.org

646.495.1345

Steve Smith, CEP, Publisher

steps@aiiche.org

646.495.1360

Karen Simpson, Production Coordinator

kares@aiiche.org

646.495.1346

Gordon Ellis

gorde@aiiche.org

646.495.1348

7. Communications

Tim McCreight, Communications and Marketing Manager

timm@aiiche.org

646.495.1325

8. Continuing Education

Jackie Oppenheim, Director, Continuing Education Institute, ASME

oppenheimjs@asme.org

212.591.7526

9. Design Institute for Emergency Relief Systems (DIERS)

Roxy Schneider, Sponsor Support Engineer

roxys@aiiche.org

646.495.1372



2009 Leadership Development Conference:

“LDC Driving Leadership”

AICHE Yellow Pages

Design Institute for Emergency Relief Systems (DIERS) (Continued)

Scott Berger, Director
scotb@aiiche.org
646.495.1370

10. Design Institute for Physical Properties (DIPPR)

Roxy Schneider, Sponsor Support Engineer
roxys@aiiche.org
646.495.1372

Scott Berger, Director
scotb@aiiche.org
646.495.1370

11. Executive Office

Chung Lam, Executive Office Administrator
lamc@aiiche.org
646.495.1311

12. Finance & Accounting

Rick Cain, Director, Finance & Strategic Programs
rickc@aiiche.org
646.495.1350

13. Foundation

Cathy Diana, Director, Human Resources and Foundation
cathd@aiiche.org
646.495.1340

14. Human Resources

Cathy Diana, Director, Human Resources and Foundation
cathd@aiiche.org
646.495.1340

15. Information Technology Services

Steve Youn, Senior Manager, Infrastructure and Data Management
stevy@aiiche.org
646.495.1375

16. Institute for Sustainability

Darlene Schuster, Director, IFS
sustainability@aiiche.org
410.458.5870

17. International Programs

Scott Berger, Director
scotb@aiiche.org
646.495.1370

18. Meeting Operations

Jeffrey Wood, Meetings Director
jeffw@aiiche.org
646.495.1315

Iliak Killeen, Meetings Professional
iliak@aiiche.org
646.495.1316



2009 Leadership Development Conference:

“LDC Driving Leadership”

AICHE Yellow Pages

19. Marketing

Tim McCreight, Marketing and Communications
Manager

timm@aiche.org

646.495.1325

20. Member Services

xpress@aiche.org

800-AICHEM

21. Membership Support and Programs

Felicia Guglielmi, Director, Volunteer and
Membership Activities

felig@aiche.org

646.495.1330

22. Operations

Bette Lawler, Director, Operations

bette@aiche.org

646.495.1320

23. Personal Financial Benefits

Camille Belcuore, Manager, Personal
Financial Benefits

camib@aiche.org

646.495.1321

24. Society for Biological Engineering

June Wispelwey, Director, SBE

bio@aiche.org

646.495.1380

25. Students and Young Professionals Programs

Lowell Aplebaum, Senior Professional,
Students & Volunteer Activities

lowea@aiche.org

646.495.1332

26. Technical Activities and Publications

Stephen Smith, Director, Technical
Activities and Publications

steps@aiche.org

646.495.1360

27. Technical Societies

Scott Berger, Director

scotb@aiche.org

646.495.1370

28. Technical Programming

programming@aiche.org

646.495.1367

29. Volunteer Support and Programs

Felicia Guglielmi, Director, Volunteer and
Membership Activities

felig@aiche.org

646.495.1330

30. Web Support

Member Services

xpress@aiche.org

800-AICHEM



2009 Leadership Development Conference:

“LDC Driving Leadership”

January 2009

2009 Career and Education Operating Council (CEOC) Guide

- **FOCUS:** The CEOC focuses on the education, professional, and financial needs of AIChE members and related stakeholders, and is accountable for degreed chemical engineering education, professional development, and career and financial services provided by the Institute. Additionally, CEOC oversees the operation of all Local Sections and Student Chapters.
- **FUNCTION:** CEOC is one of three Operating Councils that reports to the Board of Directors. The CEOC may take actions and develop policies for Institute activities within the focus areas. Actions may include the creation and dissolution of committees, divisions, local sections, student chapters, task forces, and other entities. Detailed descriptions of existing entities and committees are provided below. Actions by entities that affect the mission or finances of the Institute must be brought to the CEOC for approval.
- **BUDGET:** The combined operating councils have a limited budget for direct expenses as well as small projects. The CEOC entities/committees may submit budget requests to the CEOC for special projects.
- **AICHE STRATEGIC PLAN:** The plan was finalized in 2008. It may be found on the AIChE web site at:
< <http://www.aiche.org/About/WhoWeAre/President/StrategicPlan.aspx> >

CEOC Members

The CEOC consists of about 15 members, including at least two members of the Board of Directors (BOD) and no more than two members of the Institute staff.

	Name	Affiliation	Email
Chair*	Freeman Self	Bechtel, Inc.	feself@bechtel.com (o) 713-235-3055 murself@pdq.net (h) 713-526-9172
Past-Chair*	Michael Poirier	Savannah River National Laboratory	michael.poirier@SRNL.doe.gov 803-725-1611
Vice-Chair*	Ranil Wickramasinghe	Colorado State	wickram@engr.colostate.edu 970-266-8240 (home) 970-491-5276(w)
BOD 07-09	Wendy Young	Baker Petrolite	wendy.young@bakerpetrolite.com 281-476-1600



2009 Leadership Development Conference:

“LDC Driving Leadership”

Sr. BOD* 08-10	Jennifer Sinclair Curtis	U Florida	jcurtis@che.ufl.edu 0882	352-392-
Jr. BOD 09-11	Neil Yeoman	Retired	loretta.neil@juno.com 946-9530	516-
Sr. Staff *	Felicia Guglielmi	AIChE	felig@aiche.org 1330	646-495-
Staff	Lowell Aplebaum	AIChE	lowea@aiche.org 1332	646-495-
Member 07-09	Brian Daly	CD Tech / ABB	bastion05@gmail.com 821-5340	713-
Member 07-09	Steve Duke	Auburn University	dukeste@auburn.edu 844-2087	334-
Member 08-09	Jim Cobb	U of Pittsburgh	jandlcobb@comcast.net 793-2869	412-
Member 08-10	Neil Yeoman	Retired	loretta.neil@juno.com 946-9530	516-
Member 08-10	Diane Spencer	Lawrence Livermore National Lab	spencer22@LLNL.gov 925-422-8045(w) 925-939-0816 (home)	
Member 08-10	Robert Y. Ofoli	Michigan State	ofoli@egr.msu.edu 432-1575	517-
Member 09-11	Ranil Wickramasinghe	Colorado State	wickram@engr.colostate.edu 970-266-8240 (home) 970-491-5276(w)	
Member 09-11	Matt Kolodney	Texas Commission on Environmental Quality	mkolodne@tceq.state.tx.us 713-767-3752	
Member 09-11	Jeff Perl	Chicago Chem Consultants Corporation	jefferyperl@chichem.com 226-2436	312-
CTOC Liaison	John Ekerdt	2009 Chair CTOC / U Texas	ekerdt@che.utexas.edu 471-4689	512-
SIOC Liaison	John F. Cirucci	Air Products and Chemicals, Inc	CiruccJF@airproducts.com 610-481-8571 (office)	

*Members of the CEOC Executive Committee



2009 Leadership Development Conference:

“LDC Driving Leadership”

Sharepoint Site < aicheprojects.sharepointsite.net/CEOC >

Meetings

CEOC face-to-face meetings (times may change but are usually at the following times)

1. Saturday, April 25, 2009 (12:00 - 5 p.m.) before AIChE Spring Meeting – Tampa FL
2. Saturday, November 7, 2009 (12:00 - 5 p.m.) before AIChE Annual Meeting - Nashville TN

Teleconferences Dial-In Information:

Number: 1-800-531-3250

ID Number: 9229112

Moderator: Freeman Self

Calendar:

The conference calls will begin at 3:30 p.m. EST (2:30 CST) and last for approximately one hour.

- | | | |
|----------------------------|------------------|---|
| 1. Wednesday, December 17 | 3:30 - 4:30 EST | Teleconference |
| 2. Thursday, January 15 | 3:00 - 4:00 EST | Teleconference |
| 3. Thursday, February 19 | 3:30 - 4:30 EST | Teleconference |
| 4. Thursday, March 19 | 3:30 - 4:30 EST | Teleconference |
| 5. Monday, March 30 | End-of-Day | Report #1 on New Initiative Projects |
| 6. Saturday, April 25 | 12:00 - 5:00 EDT | Tampa AIChE Spring Meeting |
| 7. Monday, May 18 | End-of-Day | Report #2 on New Initiative Projects |
| 8. Thursday, May 21 | 3:30 - 4:30 EST | Teleconference |
| 9. Friday, June 12 | ----- | BOD Meeting (no actions for CEOC) |
| 10. Thursday, June 18 | 3:30 - 4:30 EST | Teleconference |
| 11. Thursday, July 16 | 3:30 - 4:30 EST | Teleconference |
| 12. Thursday, July 16 | 3:30 - 4:30 EST | Names for CEOC new members due |
| 13. Thursday, August 20 | 3:30 - 4:30 EST | Teleconference |
| 14. Thursday, August 20 | 3:30 - 4:30 EST | 2010 Budgets Due to Rick Cain |
| 15. Tuesday, 1 September | End of day | New CEOC members selected - "form" due |
| 16. Thursday, September 17 | 3:30 - 4:30 EST | Teleconference |
| 17. Monday, October 12 | End-of-Day | Progress Report #3 on New Initiative Projects |
| 18. Thursday, October 15 | 3:30 - 4:30 EST | Teleconference |
| 19. Saturday, November 7 | 12:00 - 5:00 EST | Nashville AIChE Annual Meeting |
| 20. Thursday, December 17 | 3:30 - 4:30 EST | Teleconference |

CEOC Alias ceoc@aiche.org

CEOC Distribution List

Lowell Aplebaum; John Cirucci-SIOC; Jim Cobb; Jennifer Sinclair Curtis; Brian Daly; Steve Duke; John Ekerdt-CTOC; Scott Fogler (sfogler@umich.edu); Amit Guptaitg@aiche.org), Felicia Guglielmi, Matt Kolodney, Robert Ofoli, Jeff Perl, Michael Poirier, Freeman Self, Diane Spencer, Ranil Wickramasinghe; Neil Yeoman; Wendy Young



2009 Leadership Development Conference:

“LDC Driving Leadership”

Entities (Committees, Councils, Task Forces) Reporting to CEOC

The formal committees are under the jurisdiction of the CEOC. The CEOC liaisons are the primary means of communication between the entity and CEOC. CEOC liaison responsibilities for active committees:

1. Overall responsibility is to a) monitor and facilitate the alignment of BOD / CEOC / Committee goals and b) monitor and facilitate progress on key Committee action items
2. Initially contact the chair of the committee (via voice-not email) and explain who you are, the role of CEOC with the committee, and discuss any needs in which CEOC can play a role. Please make it clear that decisions affecting other entities or the Institute mission and finances must be cleared through the CEOC and Board of Directors.
3. Regularly keep in touch with the staff liaison.
4. *Actively* participate in *some* of the committee conference calls, meetings, etc.
5. Report regularly to CEOC on the Committee’s issues, needs, and progress on key action items. Provide a brief (a few paragraphs) committee report to the CEOC Chair as necessary.

Task forces and ad-hoc committees are formed as needed to resolve short term issues.

Local Sections Committee

Entity Lead:	<ul style="list-style-type: none"> • Craig Wildemuth (until Spring '09 mtg) • Dave Jacobs - 2009-2010 Chair, 	<ul style="list-style-type: none"> • c.wildemuth@mtrinc.com • William.jacobs@src.gov
Staff Liaison:	Lowell Aplebaum	lowea@aiche.org
CEOC Liaison:	Matt Kolodney, Diane Spencer	

This committee a) improves relationships and linkages of local sections with AICHE staff and the CEOC, b) establishes quarterly networking calls, develops a list serve, and/or other effective tools for information sharing, c) develops practical local section resource materials, and d) highlights local section best practices.

Membership Committee

Entity Lead:	<ul style="list-style-type: none"> • Wendy Young - 2008 Chair • 2009 Chair – to be announced 	wendy.young@bakerpetrolite.com
Staff Liaison:	Bette Lawler	bette@aiche.org
CEOC Liaison:	Steve Duke	dukeste@auburn.edu

This committee’s principal current assignment is the establishment of procedures and programs to increase the number of members in the Institute.

Student Chapters Committee

Entity Lead: Ed Trujillo – 2009 Chair rujil.trujillo@utah.edu

Staff Liaison: Lowell Aplebaum lowea@aiche.org

CEOC Liaison: Steve Duke, Robert Ofoli dukeste@auburn.edu; ofoli@egr.msu.edu

This committee a) provides assistance to the Student Chapters and coordinates their activities for the Institute, b) considers applications for Student Chapter charters and recommends the granting of new charters to the CEOC, c) presents nominations of Student Chapter Advisors to the Board, d) exercises general supervision over the Student Chapters, subject to approval of the Board

Professional Development Committee

Entity Lead: Caroline Reynolds crsolns@texas.net

Staff Liaison: Felicia Guglielmi felig@aiche.org

CEOC Liaison: Michael Poirier michael.poirier@srnl.doe.gov

This committee a) develops methods and programs which will assist the individual chemical engineer to develop professionally at each stage of his or her career in industry, in government service, in private practice, or in educational institutions, b) develops programs that are concerned with the personal needs of the membership, c) assists in the development of general ethical principles which shall be the basis for the practice of the profession of chemical engineering, and d) cooperates with other committees of AIChE and maintain liaison with other professional engineering organizations toward the achievement of the foregoing objectives. Currently, focused programs include the developing and monitoring of live courses and Content-on-Demand, and monitoring licensing issues with NCEES B+30.

Education Services Committee

Entity Lead:

- Alan Nelson – aenelson@dow.com
- Satish J. Parulekar –Past Chair parulekar@iit.edu

Staff Liaison: Rick Cain rickc@aiche.org

CEOC Liaison: Michael Poirier michael.poirier@srnl.doe.gov

This committee, in cooperation with other entities as appropriate, develops and/or monitors all controlled enrollment educational activities sponsored or supported by and/or associated with the Institute. In particular the ASME Courses fall under this jurisdiction.



Education and Accreditation Committee

Entity Lead: Jeff Sirola sirola@eastman.com
Staff Liaison: Felicia Guglielmi felig@aiche.org
CEOC Liaison: Jim Cobb jandlcobb@comcast.net

This committee a) serves as the Institute’s authority on the status of chemical engineering education, b) advises schools on methods and standards of chemical engineering education, and c) inspects and evaluates chemical engineering programs for ABET. This committee is authorized to cooperate with other inspecting and accrediting agencies under agreements ratified by the Board. The "Body of Knowledge (BOK) Task Team" is a subcommittee of the E&A Committee.

Young Professionals Advisory Board (YPAB)

Entity Lead:

- David Wishnick – 2009 Chair
- S. Tom King - Past Chair

Staff Liaison: Lowell Aplebaum lowea@aiche.org
CEOC Liaison: Brian Daly bastion05@gmail.com

This Board has a charter to define and prioritize products and services for the chemical engineer in the initial years following completion of an undergraduate degree aimed at 1) assisting in developing / delivering services to this group 2) assisting AIChE in reaching this disenfranchised group and 3) representing the interests of this group to AIChE at large

Speakers Academy Committee

Entity Lead: Jim Hill - Lead jchill@iastate.edu
BOD Liaison: Jennifer Sinclair Curtis jcurtis@che.ufl.edu
Staff Liaison: Felicia Guglielmi felig@aiche.org
CEOC Liaison: none

This committee will establish and coordinate a program to make outstanding speakers available to Local Sections and Student Chapters across the country.



Technician Affairs Committee

Entity Lead: James Byrne jbbyrne@comcast.net

Staff Liaison: Felicia Guglielmi felig@aiche.org

CEOC Liaison: none

TAC a) develops methods & programs that foster the growth and development of technicians as team members & stimulates the contributions that they make to the profession & the CPI b) encourages a viable, fruitful relationship between the professional chemical engineer & technicians characterized by mutual respect c) advises schools on curricula, methods & standards of chemical engineering technician & chemical process operator education d) cooperates with accreditation agencies in the inspection & evaluation of programs for the education & training of engineering & process operations technicians e) cooperates with certification agencies in examinations & awarding of certificates for chemical engineering & process operations technicians f) advises other committees of AIChE & other technical societies g) advises appropriate federal agencies in matters concerning chemical engineering & process operations technicians.

Fellows

Entity Lead: John O’Connell jpo2x@cms.mail.virginia.edu

Staff Liaison: Martin Clancy; Christine Ingram martc@aiche.org; chrii@aiche.org

CEOC Liaison: Jim Cobb jandlcobb@comcast.net

The Fellow grade of AIChE is awarded to less than five percent of the total Institute membership. Selections by the Board of Directors, from recommendations of the Admissions Committee, using submitted nominations, are based on an individual's quality of professional attainment and significance of accomplishment in engineering. These most distinguished members of AIChE are the members of the Fellows Organization for engaging in sponsorship of, and participating in, Institute activities. At each National and Annual Meeting, there is a Breakfast gathering where a) reports from Institute leadership are heard and discussed, b) decisions are taken about sponsorship of AIChE events, and c) social interactions occur. The Chair of the Fellows Organization sets the agenda and chairs the Breakfasts, as well as communicates decisions and information to the Fellowship..

SACHE (Safety & Chemical Engineering Education)

Entity Lead: Wendy Smades wlsmade@dow.com

Staff Liaison: Roxy Schnieder roxys@aiche.org

CEOC Liaison: Robert Ofoli ofoli@egr.msu.edu

SACHE is a project under the auspices of AIChE’s Center for Chemical Process Safety (CCPS). SACHE’s charter is to enhance the presentation of process safety in undergraduate education. The SACHE program develops curriculum materials that are used by over 140 universities to introduce process safety into chemical engineering courses.

Chemical Engineering Education Projects Committee

Entity Lead: Dave Dixon david.dixon@sdsmt.edu
Staff Liaison: Felicia Guglielmi felig@aiche.org
CEOC Liaison: none

It shall (a) initiate, stimulate, and receive from others suggestions for important projects of general interest and value to chemical engineering teaching; and (b) promote such projects, or recommend to the Board of Directors that arrangements be made for others to do so.

Chemical Technology Operating Council (CTOC)

Entity Lead: John Ekerdt -2009 Chair ekherdt@che.utexas.edu
 George Liebermann - Past-Chair george.liebermann@xerox.com
Staff Liaison: Steve Smith steps@aiche.org
CEOC Liaison: Neil Yeoman loretta.neil@juno.com
CTOC Liaison to CEOC John Ekerdt ekherdt@che.utexas.edu

CTOC, reporting to the Board of Directors, is responsible for two major areas: the frontiers of chemical engineering—in other words, knowledge advancement; and, the dissemination of that knowledge. Accountabilities include meetings, publications, and AIChE’s Industry Technology Alliances.

Societal Impact Operating Council (SIOC)

Entity Lead: Tim Odi - 2009 Chair odito@cpchem.com
 Thomas R. Marrero - Past-Chair marrerot@missouri.edu
Staff Liaison: Tim McCreight timm@aiche.org
CEOC Liaison: Ranil Wickramasinghe wickram@engr.colostate.edu
SIOC Liaison to CEOC John F. Cirucci ciruccJF@airproducts.com

SIOC, reporting to the Board of Directors, is leading efforts to define how chemical engineers can most effectively address societal needs. Accountabilities include outreach and public policy, diversity of the profession, and the global business environment.



NCEES B+30 Teams

- Entity Leads and members*
- NCEES Interface- Bill R. Parrish (Diane Spencer, Ranil Wickramasinghe, Scott Love)
 - Body of Knowledge (BOK) - Jeff Siirola (Jim Cobb)
 - Continuing Education - Tom Hanley (Jim Cobb, Michael Poirier, Rick Cain, Tom Archibald, Linda Hicks, Gavin Towler)
- Staff* Rick Cain rickc@aiche.org

Liaison:

These three teams were formed in 2008 to address issues posed by NCEES "Bachelor+30 Hours" rule. It replaces the ETC (Education, Training and Credentials Task Force). The "Body of Knowledge (BOK) Task Team" is a subcommittee of the E&A Committee.

Content on Demand Task Force

Entity Lead: Bette Lawler lawler@aiche.org

Other

- CEOC - Jim Cobb

Liaisons

- CTOC - Chris Seymour
- NCEES B+30 – Continuing Education Task Team – Tom Hanley
- Education Services Committee - Michael Poirier
- Professional Development Committee - Michael Poirier
- Industry Representative - Jim Porter
- Training Representative - (to be announced)

This committee was formed in 2008 to coordinate issues among entities with education responsibility

International Team

Entity Lead: Ignacio Grossmann grossmann@cmu.edu
Staff Liaison: Scott Berger scotb@aiche.org
CEOC Liaison: Ranil Wickramasinghe wickram@engr.colostate.edu

CEOC By-Laws Review Task Force (ad hoc as required)

Entity Lead: Neil Yeomen loretta.neil@juno.com
Staff Liaison: Felicia Guglielmi felig@aiche.org

This committee of CEOC reviews the By-laws submitted by student chapters and local sections. The review is then presented to the CEOC for discussion. Approval of the By-laws is by vote of the CEOC.



2009 Leadership Development Conference:

“LDC Driving Leadership”

2009 CEOC Goals

(The three Progress Report due dates are listed in above calendar)

Goal	Leader
NCEES Meeting Travel (2009 Budget Project)	Ranil Wickramasinghe
LS Officers to Attend 2009 Augusta LDC (2009 Budget Project)	F Guglielmi, F Self
Staff Visit to Local Sections – Lowell and / or Felicia (2009 Budget Project)	F Guglielmi, F Self
Speakers Academy (2009 Budget Project)	F Self, F Guglielmi
K12 Outreach at AIChE Regional Chicago 2009 Conference (2009 Budget Project)	Alan Zagoria < alan.zagoria@uop.com >
SACHE - Safety Webinars (2009 Budget Project)	Ron Willey, 617-373-3962 < r.willey@neu.edu >
Web Sites for Local Sections (2009 Budget Project)	Matt Kolodney

2009 AIChE Goals

Meet or exceed operating profit target of \$136K
Continue to grow student membership and implement activities to retain students as they enter the work place
Monitor economic activity closely and make budget adjustments if needed
Complete the transition to the new Executive Director
Continue implementation of Strategic Plan <ul style="list-style-type: none"> • Establish Asia/Pacific business office in India • Develop energy metrics program and establish Energy Advisory Board • Develop a carbon management certification program with the Founders Societies • Present the chemical engineering body of knowledge to NCEES • Implement a new continuing education strategy • Develop and implement an “On Demand” web based library

Sponsors

A special thanks to all of our generous sponsors. Their financial support paid for most of the conference, which minimized the cost for the attendees. Please take the time to thank our sponsors.

Platinum Sponsors (>\$3,000)

American Institute of
Chemical Engineers



<http://www.aiche.org>

Silver Sponsors (<\$1,000)

John Steimke

AIChE's Nuclear
Engineering Division



<http://www.aiche-ned.org>

AIChE's Catalysis and
Reaction Engineering
Division



[http://www.aiche.org/
DivisionsForums/ViewAll/CRE.aspx](http://www.aiche.org/DivisionsForums/ViewAll/CRE.aspx)

Thiele Kaolin Company
PO Box 1056
Sandersville, GA



<http://www.thielekaolin.com>

Host

AIChE's Central
Savannah River Section



<http://www.aiche-csra.org>