



Software & Information Technology

Microsite Provides Information on Weighing

This microsite is designed to make weighing expertise widely accessible. It is based on the company's Global Weighing Practice (GWP) Weighing Standard, and provides free information on all weighing topics. The GWP presents a scientific approach to safe selection, calibration, and operation of measurement equipment. The microsite includes information on correct weighing procedures, risks associated with weighing, and industry standards such as ISO, GMP/GLP, USP, and HACCP. Users can stay up to date on weighing topics with industry-specific news, customer case studies, and white papers, as well as watch on-demand webinars, download information, and try the free Weighing Risk assessment tool. The microsite provides information relevant to 13 different market segments (e.g., food, pharmaceutical, and chemical) to better focus on each segment's needs. Users can explore the new microsite at www.mt.com/gwp.

Mettler Toledo

www.mt.com

Predictive Diagnostics Enhance Foundation Fieldbus Control Systems

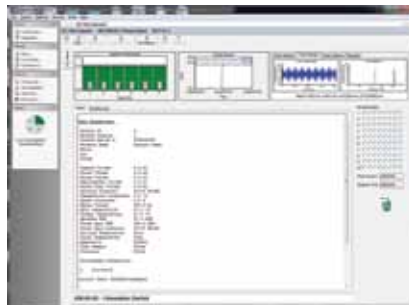
The AMS Suite predictive maintenance software can now connect to any Foundation fieldbus network. AMS Suite uses predictive maintenance to improve the performance of key production assets, including mechanical equipment, electrical systems, instruments, and valves. It enables users to detect equipment problems before they occur. The software has been successfully integrated with Softing's Linking Device and Gateway FG-110-FF, which provide connectivity to up to four Foundation fieldbus H1 segments with as many as 64 field devices. The software

includes a Windows-based configuration package for Foundation fieldbus that enables field-device linking and configuration.

Emerson

www.emerson.com

Workstation Improves Pharmaceutical Ingredient Monitoring



The newest version of the Dissolution Workstation software provides better data integration, method change control, and instrument monitoring for controlling multiple dissolution systems in the pharmaceuticals industry. Users can consolidate and maintain electronic dissolution data in one location, with options for exporting data into a laboratory information management system or into applications such as SAP Crystal Reports or Microsoft Excel. The software monitors the dissolution apparatus for vibration and environmental changes. Failure investigation assistance is available when using the Instrument Module. The software can now be programmed to add an automated system-cleaning cycle to the end of each run, extending the life of dissolution equipment.

Agilent Technologies, Inc.

www.agilent.com

Web Studio Update Offers Support for Handheld Devices

Service Pack 2 (SP2) is the newest update to Web Studio 7.1 software. It provides support for HTML5 screens and animation for multiple devices

and platforms, including Safari and Chrome web browsers. Users can now create screens with the Web Studio's standard screen editor, and then deploy those screens across multiple operating systems. Screens can be instantly accessed on various handheld devices via the Studio Mobile Access interface. SP2 offers support for native shapes such as lines, rectangles, polygons, and ellipses, which allows the screens on handheld devices to appear much like those on larger displays. It supports a wide range of images (e.g., .bmp, .jpg, .png) and animation capabilities. SP2 also provides built-in troubleshooting tools for Web Studio's VBScript editor. These new tools, such as breakpoints and variable watch lists, make debugging much easier. Users can debug a discrete section of code and review the result, instead of having to debug the entire code. Users can also step through their VBScript code one line at a time by using the Step Into, Step Over, and Step Out tools.

InduSoft

www.indusoft.com

Software Offers Continuous Access to Control Equipment via a Web Browser

The InTouch Access Anywhere software enables users to access plant data from any mobile device, including Microsoft Surface tablets, as well as iPad, iPhone, and Android devices, among others. The software also supports Macintosh and Linux-based computer systems, as well as Windows PCs and laptops. It runs securely inside a web browser so users can connect to other InTouch applications at anytime from anywhere. Because users are not required to install any software on their mobile device, the offering is easy to deploy and manage.

Invensys

www.invensys.com