

Equipment

FOR SALE / RENT
24/7 EMERGENCY SERVICE

BOILERS
20,000 - 400,000 #/Hr.

DIESEL & TURBINE GENERATORS
50 - 25,000 KW

GEARS & TURBINES
25 - 4000 HP

WE STOCK LARGE INVENTORIES OF:

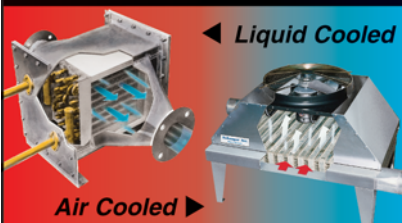
Air Pre-Heaters • Economizers
Deaerators • Pumps • Motors
Fuel Oil Heating & Pump Sets
Valves • Tubes • Controls
Compressors • Pulverizers
Rental Boilers & Generators

WWW.WABASHPOWER.COM
800-704-2002

wabash Power Equipment Co.
444 Carpenter Avenue Wheeling, IL 60090

www.aiche.org/cep or Circle No. 200

HEAT EXCHANGERS



FOR GASES & LIQUIDS!

Talk Directly with Design Engineers!
Blower Cooling Vent Condensing

Xchanger

(952) 933-2559 Fax: (952) 933-5647
www.xchanger.com info@xchanger.com

www.aiche.org/cep or Circle No. 201

PROCESS FILTRATION EQUIPMENT

JWI Filter presses with polypro recessed plates
Sparkler & Niagara horizontal plate filters,
Model 33D17, 18S23, 1824S & 3348S
Stainless Steel ERTEL & STAR Filter presses
Nutsche filter, 10 gal, 316 SS, 35 psi
K-S Avery 35 cu. ft. membrane filter press, polypro plates
US Autojet, Pressure leaf, 400 sq. ft., stainless steel

AVERY FILTER COMPANY
(201) 666-9664 Fax (201) 666-3802
E-mail: larry@averyfilter.com
www.averyfilter.com

www.aiche.org/cep or Circle No. 202

BOILERS
Available Immediately!



lease • rental • sale

(3) New 250,000 PPH 750 PSI / 750 Deg. S.H. with Low NOx Burners

(2) New 250,000 PPH 850 PSI / 750 Deg. S.H. with Low NOx Burners

250,000-850 PSI / 750 Deg. F.	TRAILER MOUNTED
250,000-750 PSI / 750 Deg. F.	72K-350 PSI
180,000-750 PSI / 750 Deg. F.	70K-350 PSI
165,000-1025 PSI / 850 Deg. F.	70K-350 PSI
165,000-350 PSI	45K-750 PSI
150,000-750 PSI / 750 Deg. F.	40K-350 PSI
135,000-750 PSI / 750 Deg. F.	36K-300 PSI
120,000-350 PSI	30K-300 PSI
120,000-725 PSI / 750 Deg. F.	24K-300 PSI
70,000-350 PSI	
60,000-750 PSI / 750 Deg. F.	
50,000-350 PSI	
40,000-750 PSI	
40,000-350 PSI	
30,000-350 PSI	
20,000-1600 PSI	
10-1,000 HP / 15-250 PSI	



INDECK

INDECK POWER EQUIPMENT COMPANY
tel 847.541.8300 / 800.446.3325
fax 847.541.9984
info@indeck-power.com
www.indeck.com

www.aiche.org/cep or Circle No. 203



MACHINERY & EQUIPMENT Co. Inc.
Quality Used Equipment!

We have over 5,000 pieces of used processing and packaging machinery available. A large portion of this equipment was used in the Chemical and Pharmaceutical Industries.

Please visit our website to view detailed descriptions and photos at:
www.machineryandequipment.com

P.O. Box 7632 San Francisco, CA 94120 Toll Free: (800) 227-4544
Fax: (415) 467-2639 Phone: (415) 467-3400
Email: info@machineryandequipment.com

www.aiche.org/cep or Circle No. 204



Looking to Advertise?

Contact Doris Deutsch at
doris@aiche.org

Consulting



CRYSTALLIZATION & PRECIPITATION

Dr. Wayne J. Genck Genck International
3 Somonauk Court, Park Forest, IL 60466
Tel (708) 748-7200 Fax (708) 748-7208
genckintl@aol.com — <http://www.genckintl.com>

- Design/Scale-up
- Size Distribution
- Laboratory Investigations
- Filtration
- Troubleshooting
- Purity
- Caking
- Drying
- Particle Habit
- Product Micro-Analysis
- Polymorphism
- Kinetics Studies

◆◆◆ Industrial Seminars ◆◆◆

www.aiche.org/cep or Circle No. 205

EQUIPMENT FOR SALE

- 16 TON C-FRAME MULTIPRESS NEW IN '96
- 300 GALLON BP MDL JUMM-2 W/OIL HEATER
- 300 GALLON BP MDL NMM VACUUM MIXER
- AARON 1 GAL. SS SIGMA BLADE LAB MIXER
- BAKER-PERKINS LAB DOUGH MIXER, UNUSED
- DAY 550 GAL DAYMAX 100 HP SS DISPERSER
- BONNOT 4" EXTRUDER LINE W/CONVEYORS
- ABBE 256 SS CU. FT. DBL CONE MIXER
- 250 GAL PROCESS EQUIP. SANITARY TANK
- 250 GAL PROCESS EQUIP. SANITARY TANK ON WHEELS
- 250 GAL PRECISION INSULATED SS SANITARY TANK WITH 3/4 HP LIGHTIN AGITATOR, UNUSED
- GRUENBERG LAB VACUUM TRAY DRYER, 650 DEG.

WEB SITE MOHAWKMACHINERY.COM

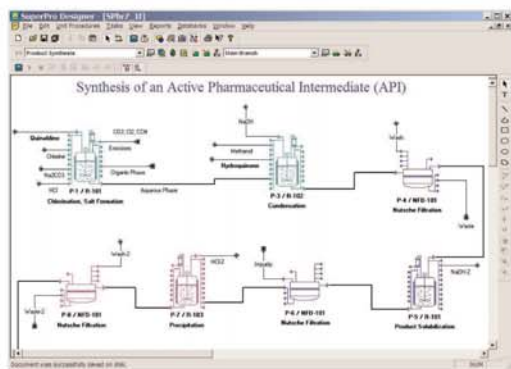
MOHAWK MACHINERY
CINCINNATI OH
513-771-1952
CALL JIM MUELLER'S CELL PHONE 513-608-7902

www.aiche.org/cep or Circle No. 206

Intelligen Suite

The Market-Leading Engineering Suite for Modeling, Evaluation, Scheduling, and Debottlenecking of Single & Multi-Product Facilities

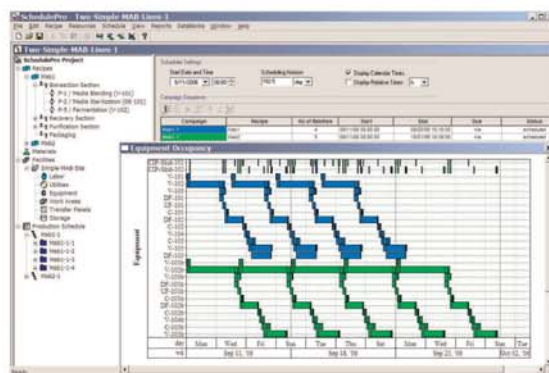
SuperPro



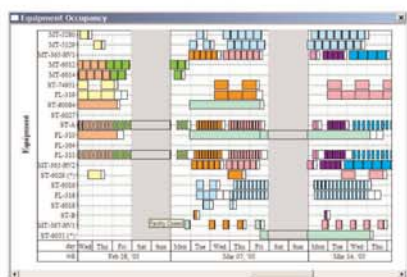
Use SuperPro Designer to model, evaluate, and debottleneck batch and continuous processes



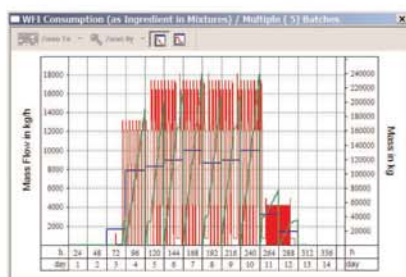
SchedulePro



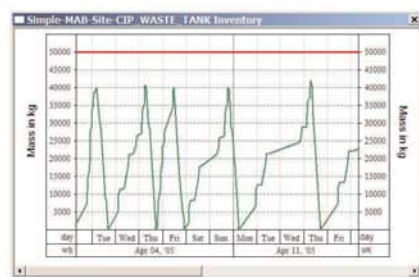
Switch to SchedulePro to schedule, model, and debottleneck multi-product facilities



Tracking of equipment occupancy in multi-product facilities



Tracking demand for resources (e.g., labor, materials, utilities, etc.)



Inventory tracking for raw materials, intermediates, products, and wastes

SuperPro Designer is a comprehensive process simulator that facilitates modeling, cost analysis, debottlenecking, cycle time reduction, and environmental impact assessment of biochemical, specialty chemical, pharmaceutical (bulk & fine), food, consumer product, mineral processing, water purification, wastewater treatment, and related processes. Its development was initiated at the Massachusetts Institute of Technology (MIT). SuperPro is already in use at more than 400 companies and 500 universities around the world (including 18 of the top 20 pharmaceutical companies and 9 of the top 10 biopharmaceutical companies).

SchedulePro is a versatile finite capacity scheduling tool that generates feasible production schedules for multi-product facilities that do not violate constraints related to the limited availability of facilities, equipment, resources and work areas. It can be used in conjunction with SuperPro (by importing its recipes) or independently (by creating recipes directly in SchedulePro). Any industry that manufactures multiple products by sharing production lines and resources can benefit from the use of SchedulePro. Engineering companies use it as a modeling tool to size utilities for batch plants, identify equipment requirements, reduce cycle times, and debottleneck facilities.

Visit our website to download detailed product literature and functional evaluation versions of our tools

INTELLIGEN, INC. • 2326 Morse Avenue • Scotch Plains, NJ 07076 • USA

Tel: (908) 654-0088 • Fax: (908) 654-3866

Email: info@intelligen.com • Website: www.intelligen.com

Intelligen also has offices in Europe and representatives in countries around the world