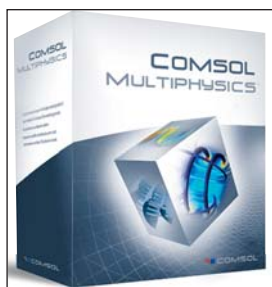




### Chemical Engineering Modeling Tool

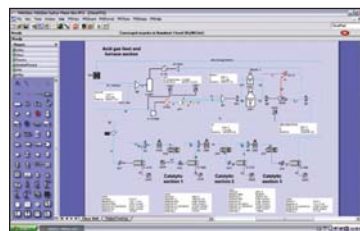


COMSOL Multiphysics® comprises a powerful, unique environment for modeling momentum, heat and mass transport coupled to chemical reactions. Now you can model fluid flow, gas flow and incompressible turbulent flow using a single tool! COMSOL Multiphysics' key features include: simultaneous solving of an arbitrary number of coupled nonlinear PDEs and state-of-the-art solvers for linear and nonlinear stationary and time-dependent problems in 1D, 2D, and 3D. **Tel: 781-273-3322; [www.comsol.com](http://www.comsol.com)**

and nonlinear stationary and time-dependent problems in 1D, 2D, and 3D. **Tel: 781-273-3322; [www.comsol.com](http://www.comsol.com)**

Reader Service Number 150

### VMGSim™ Advanced Process Simulation



Process Simulation Software models refining, chemical and oil/gas processing. Now includes support for Sulfur plants and Amine treating modeling. Write custom reactor kinetics without programming knowledge. Create custom unit operations and economic models embedded in your process model using the embedded Excel™ operation. Embed HTRI Xchanger Suite™ or HTC STX/ACX™ exchanger ratings in the process model. Completely interactive, bidirectional simulation environment. **For more information visit our website at [www.virtualmaterials.com](http://www.virtualmaterials.com)**

Reader Service Number 151

### Proceedings of the AIChE Spring Meeting and 5th World Congress On Particle Technology



The proceedings of the AIChE Spring Meeting and 5th World Congress on Particle Technology are now available for purchase. This boxed 2-CD set contains over 1,400 technical papers and includes more than 700 papers from the 5th World Congress on Particle technology, in addition to the papers from the 2nd Global Congress on Process

Safety and the 18th Ethylene Producers Conference. Organized in an easy-to-use and fully searchable format, the proceedings cover more than 250 technical sessions and 16 topical conferences. The cost for individual use is \$120. The proceedings can be purchased online at <http://shop.omnipress.com> or by calling Omnipress at 800-828-0305 or 608-246-2600 (international callers) or faxing 608-246-4237.

Reader Service Number 152

### ProMax® with TSWEET® & PROSIM®



ProMax® is a powerful and versatile stream based process simulation package for the design and optimization of gas gathering, amine sweetening, gas processing, refining, and chemical facilities. **Bryan Research & Engineering, Inc. Tel: 979-776-5220; [www.bre.com](http://www.bre.com)**

Reader Service Number 153



## Get noticed

*Place Your Ad Here for Only \$800  
All ads are 1/8 page, four-color, & include  
typesetting at no additional charge*

**Reach Nearly 35,000 Chemical Engineering Industry Professionals**

Call your local sales representative today, see p. 63 for contact information or visit [www.cep magazine.org](http://www.cep magazine.org)